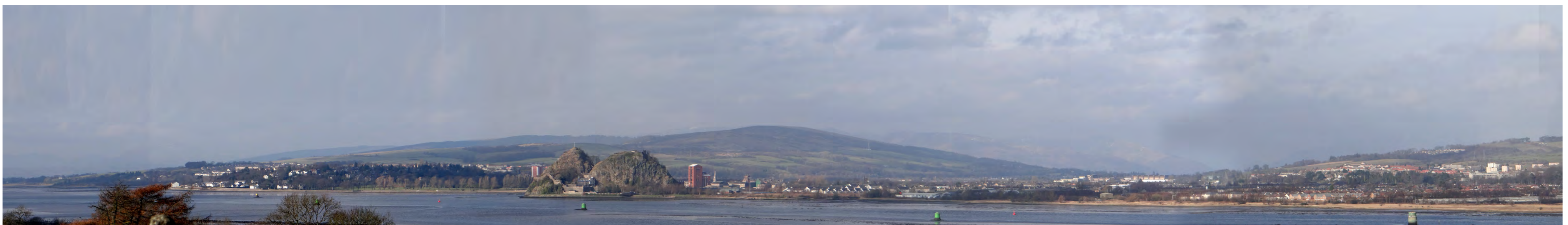
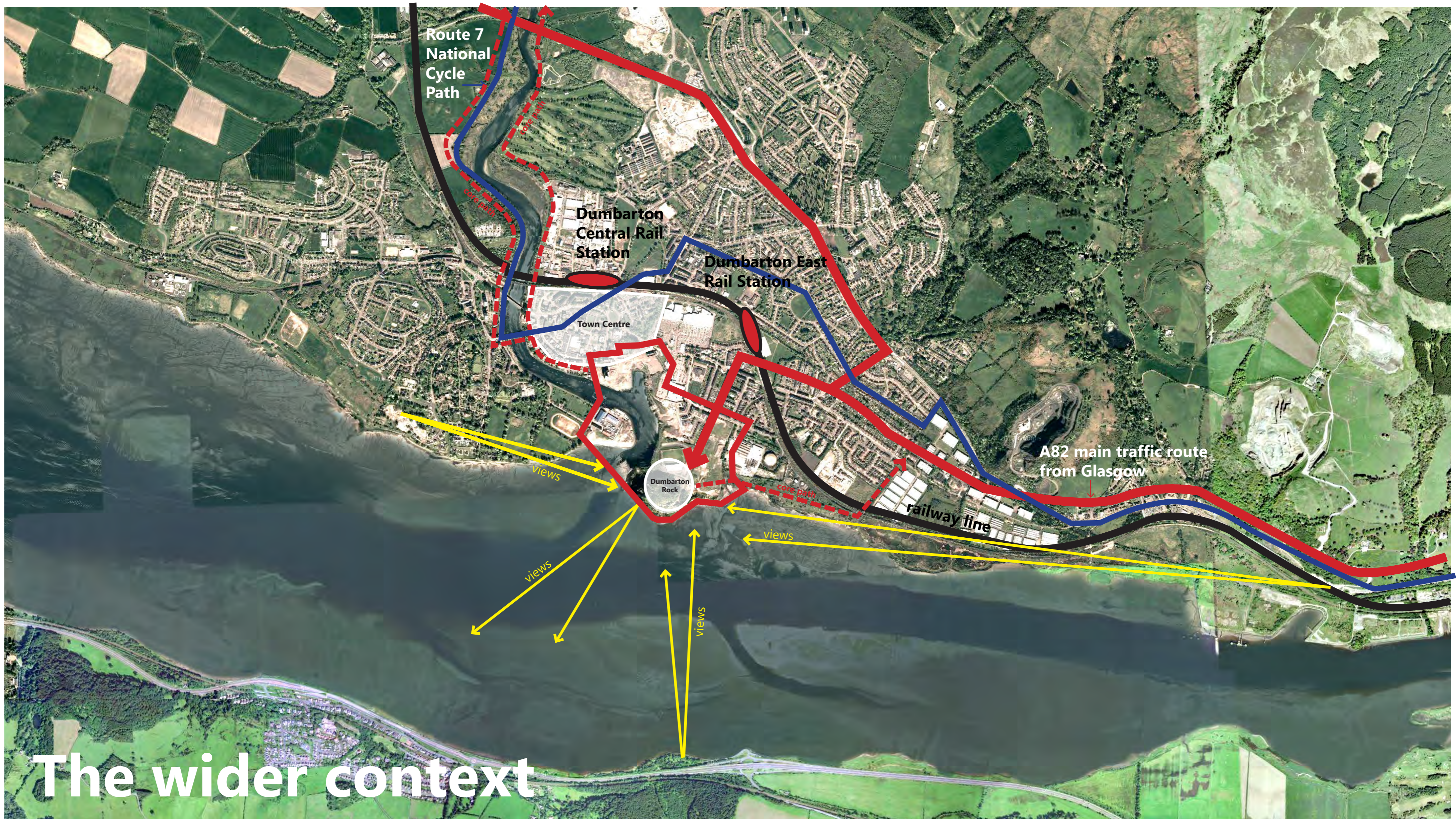


The wider area

We think that the following issues are important -what do you think ? have we missed anything?

- how do we make the most of Dumbarton Rock - an important historical monument ?
- what would make pedestrian routes from rail stations to the Rock pleasant and accessible?
- what about the traffic and roads to Dumbarton Rock - how can they be improved ?



Important views to Dumbarton Rock from M8 to south of Clyde Estuary



Dumbarton East Station Entrance



Dumbarton Central Entrance



Traffic route to Dumbarton Rock via Castle Street



View from riverside walkway at Levensgrove Park



Pedestrian routes through the town centre from station

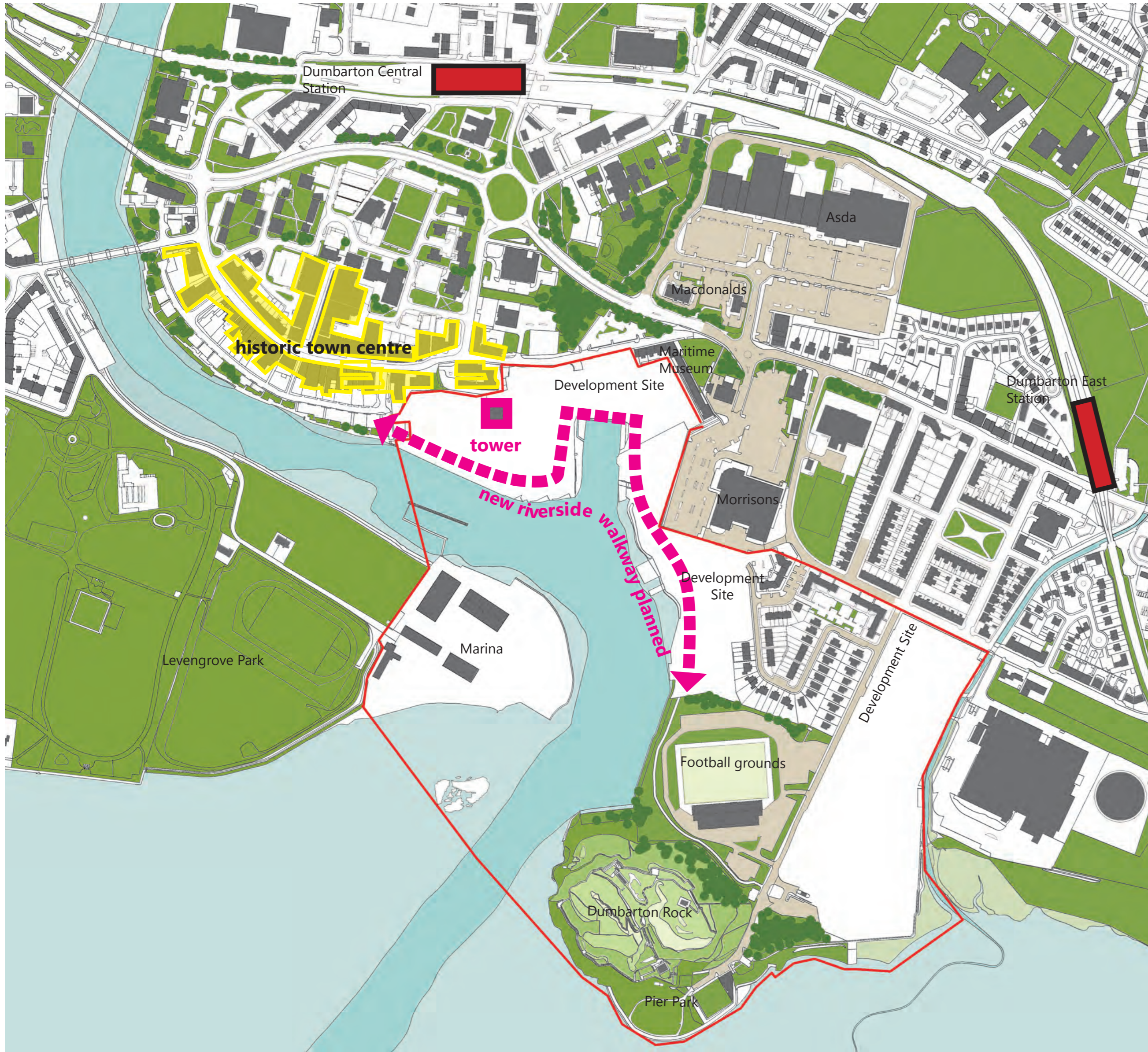


Charrette area from Levensgrove Park

The area around the charrette boundaries

We think that the following issues are important - what do you think? do you think we have missed anything?

- there is a proposed riverside walkway - do you think this is a good idea? detailed drawings are available to review
- do you think connections to the town centre along the riverside?
- what do you think is the right size and scale of development at the riverside?



we have some stunning footage of the area taken by a drone from Skyview... its pinned up on the next set of presentation boards



Building types, scale and uses



key

have we missed anything thats important ?

- retail
- civic buildings
- mixed use- retail, leisure and residential
- industrial and marine
- residential - four stories and above
- residential - 3 stories
- residential - 1 -3 stories

figure ground



The charrette area

We are interested in developing proposals that take account of:

- views across and into the area
- improving access to and from the Rock
- connections to the town centre along the riverside
- what other issues do you think are important ?



● an important area for climbers



poor access route



bouldering

● heritage river frontage in poor condition



□ distillery tower



● opportunities at foreshore walk

