

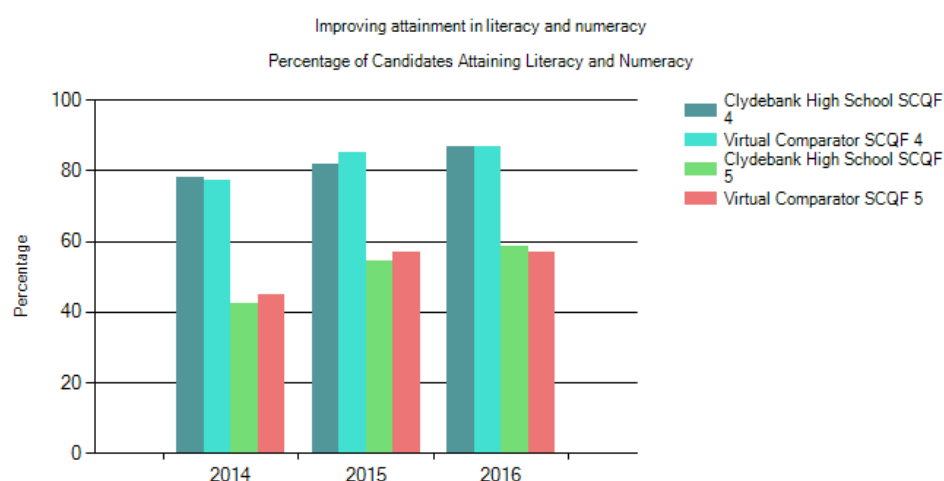
## Appendix 1 – Analysis of Data from Insight – December 2016

### Introduction

This paper gives a breakdown of the performance of each of our secondary schools in relation to three of the four key national measures from Insight. For each measure, the performance of each school is given in the form of a graphical chart, and a blue box containing 'significant' information determined by Insight. Underneath each blue box, is a commentary.

### Local Benchmarking Measure: Literacy and Numeracy

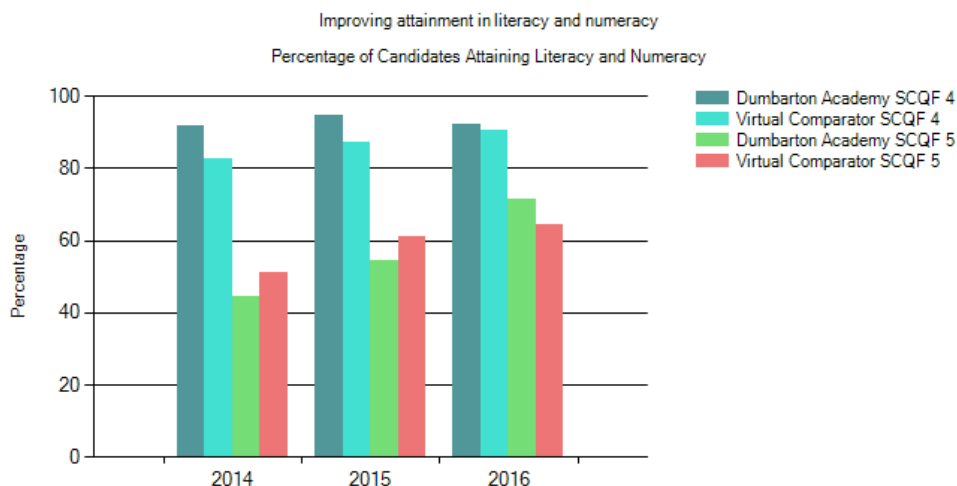
#### Clydebank High School



Testing found that there were no significant comparisons for this measure.

Clydebank High School has improved from the previous year and is ahead of its Virtual Comparator at SCQF 5 and only 0.1 percentage points behind Virtual Comparator at SCQF 4. Insight notes nothing significant in the 2016 data.

## Dumbarton Academy



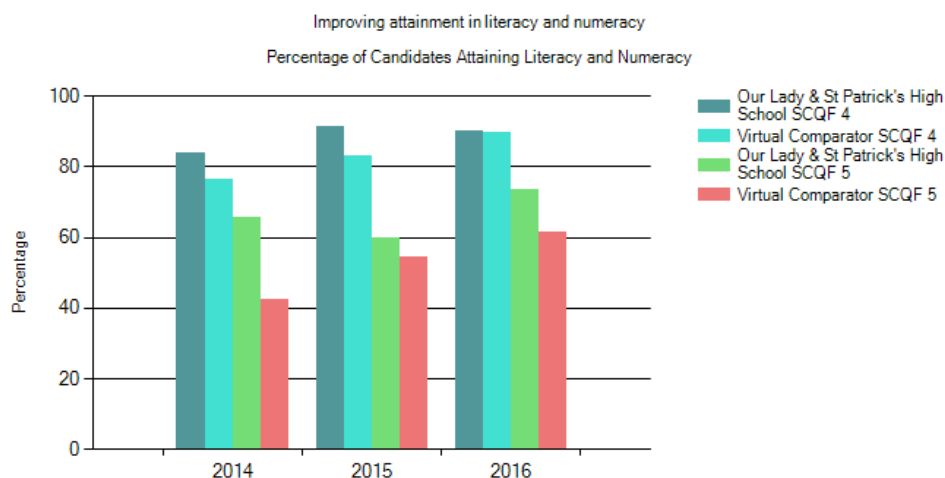
Testing found that the following comparisons were significant.

Performance in Literacy and Numeracy at SCQF Level 4, 2015 is greater than your Virtual Comparator

Performance in Literacy and Numeracy at SCQF Level 4, 2014 is much greater than your Virtual Comparator

At SCQF Level 4 Dumbarton Academy has declined from previous year, but at SCQF Level 5 it has increased by 17 percentage points. It is ahead of its Virtual Comparator at both SCQF 4 and 5. Insight notes nothing significant in the 2016 data.

## Our Lady and St Patrick's High School



Testing found that the following comparisons were significant.

Performance in Literacy and Numeracy at SCQF Level 5, 2016 is greater than your Virtual Comparator

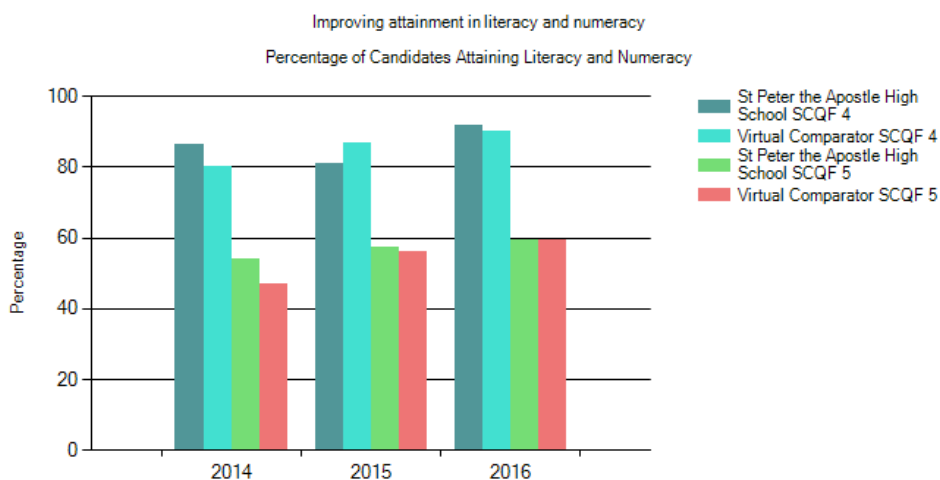
Performance in Literacy and Numeracy at SCQF Level 4, 2015 is much greater than your Virtual Comparator

Performance in Literacy and Numeracy at SCQF Level 5, 2014 is much greater than your Virtual Comparator

Performance in Literacy and Numeracy at SCQF Level 4, 2014 is greater than your Virtual Comparator

At SCQF Level 4 Our Lady and St Patrick's High School has declined from previous year, but at SCQF Level 5 it has increased by 13 percentage points. It is ahead of its Virtual Comparator at both SCQF 4 and 5. Insight notes the 2016 Level 5 performance as significant.

## St Peter the Apostle High School



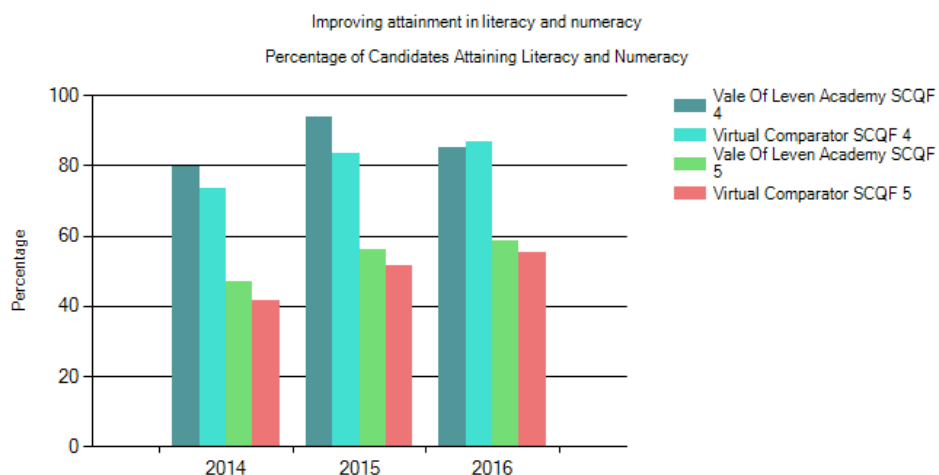
Testing found that the following comparisons were significant.

Performance in Literacy and Numeracy at SCQF Level 4, 2015 is lower than your Virtual Comparator

Performance in Literacy and Numeracy at SCQF Level 4, 2014 is greater than your Virtual Comparator

St Peter the Apostle High School has improved from the previous year and is ahead of its Virtual Comparator at SCQF 4 and only 0.18 percentage points behind Virtual Comparator at SCQF 5. Insight notes nothing significant in the 2016 data.

## Vale of Leven Academy



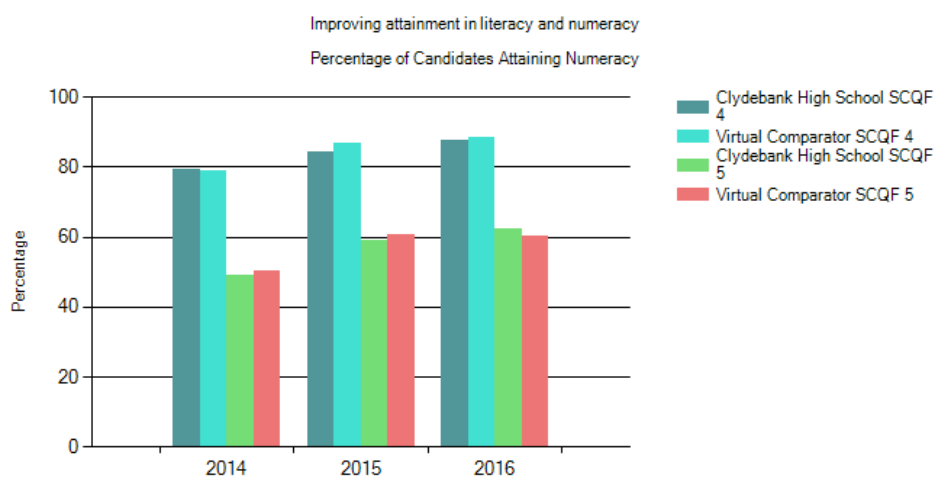
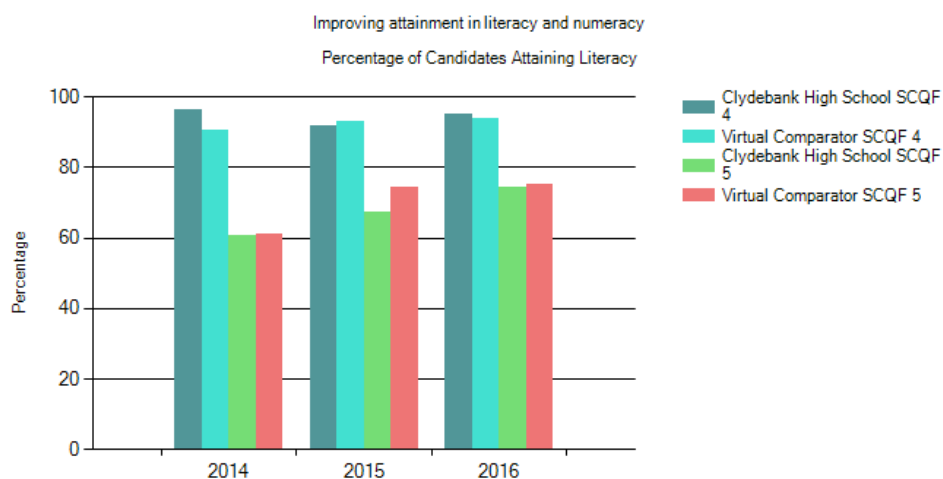
Testing found that the following comparisons were significant.

Performance in Literacy and Numeracy at SCQF Level 4, 2015 is much greater than your Virtual Comparator

At SCQF Level 4 VoLA has declined from previous year, but at SCQF Level 5 it has increased. It is below its VC at SCQF 4 and above it at SCQF 5. Insight notes nothing significant in the 2016 data.

## Local Benchmarking Measure: Literacy and Numeracy by Measure

### Clydebank High School



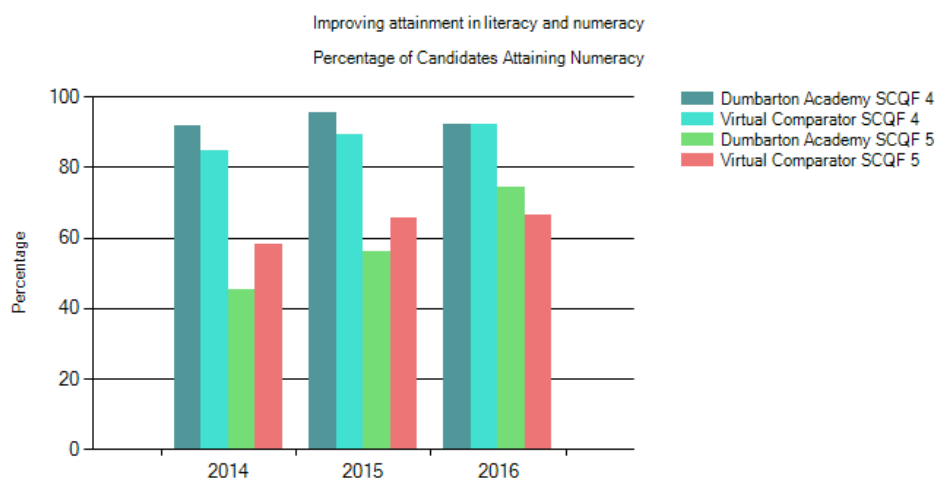
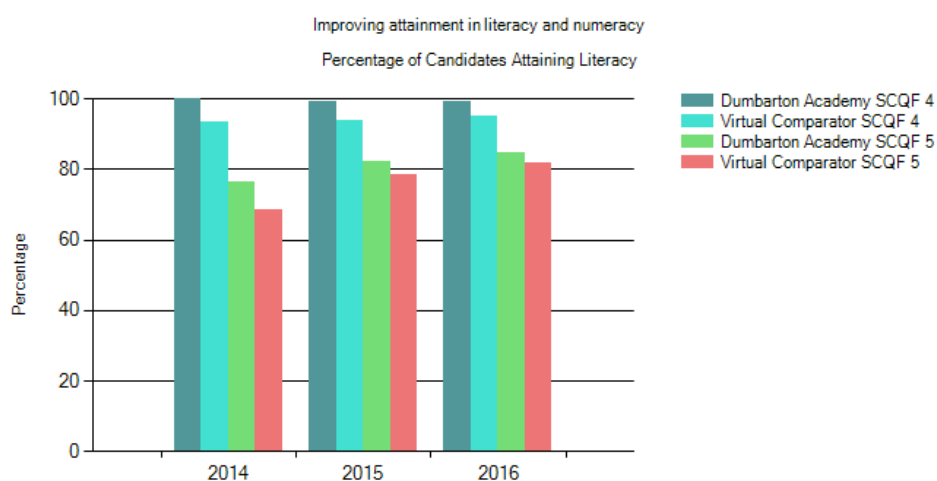
Testing found that the following comparisons were significant.

Performance in Literacy at SCQF Level 5, 2015 is lower than your Virtual Comparator

Performance in Literacy at SCQF Level 4, 2014 is much greater than your Virtual Comparator

Looking at the measures separately, Literacy at SCQF Level 4 is above the Virtual Comparator while at SCQF Level 5 it is below. In Numeracy SCQF level 4 is below the Virtual Comparator while at SCQF level 5 it is above. Insight notes nothing significant in the 2016 data.

## Dumbarton Academy



Testing found that the following comparisons were significant.

Performance in Literacy at SCQF Level 4, 2015 is much greater than your Virtual Comparator

Performance in Numeracy at SCQF Level 5, 2015 is lower than your Virtual Comparator

Performance in Numeracy at SCQF Level 4, 2015 is greater than your Virtual Comparator

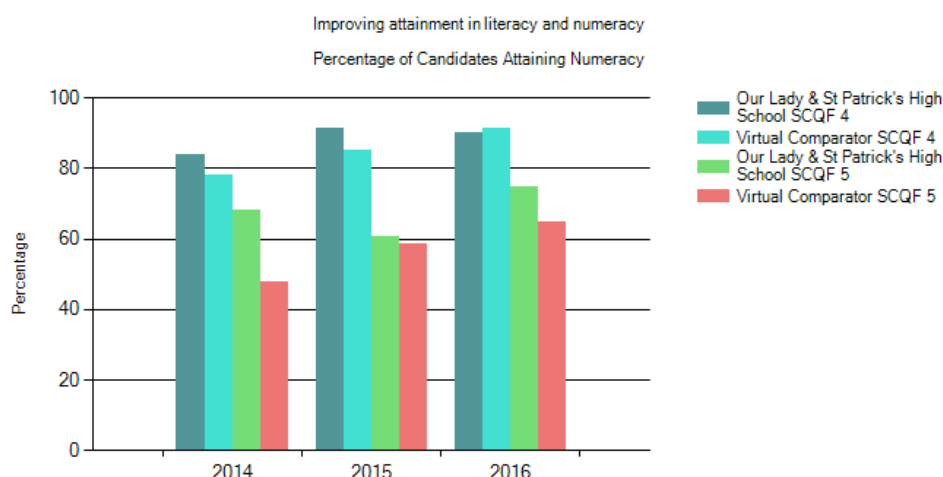
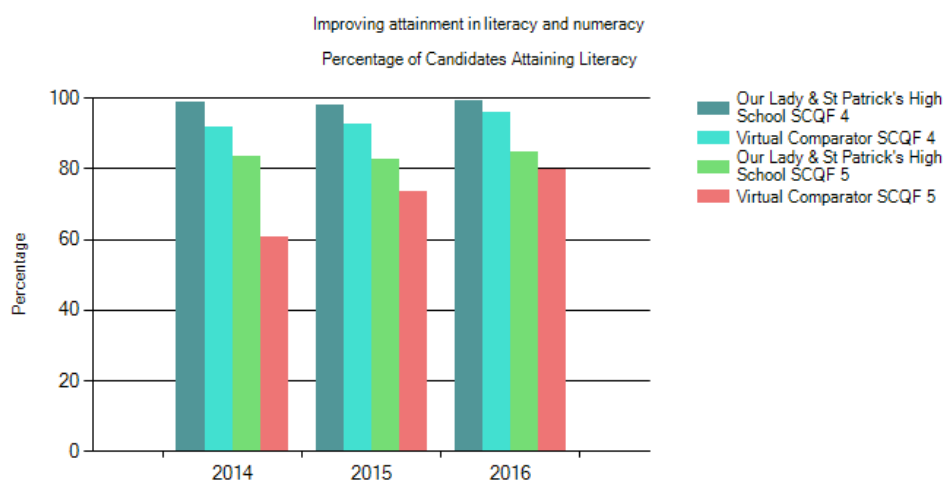
Performance in Literacy at SCQF Level 4, 2014 is much greater than your Virtual Comparator

Performance in Numeracy at SCQF Level 5, 2014 is lower than your Virtual Comparator

Performance in Numeracy at SCQF Level 4, 2014 is greater than your Virtual Comparator

Looking at the measures separately, Literacy and Numeracy at both SCQF Level 4 and 5 are above the Virtual Comparator. Insight notes nothing significant in the 2016 data.

## Our Lady and St Patrick's High School



Testing found that the following comparisons were significant.

Performance in Literacy at SCQF Level 4, 2016 is greater than your Virtual Comparator

Performance in Numeracy at SCQF Level 5, 2016 is greater than your Virtual Comparator

Performance in Literacy at SCQF Level 4, 2015 is much greater than your Virtual Comparator

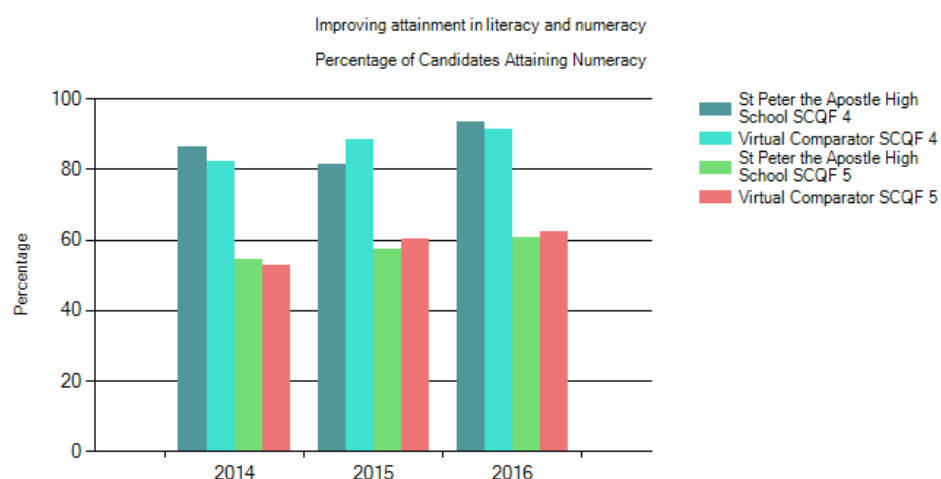
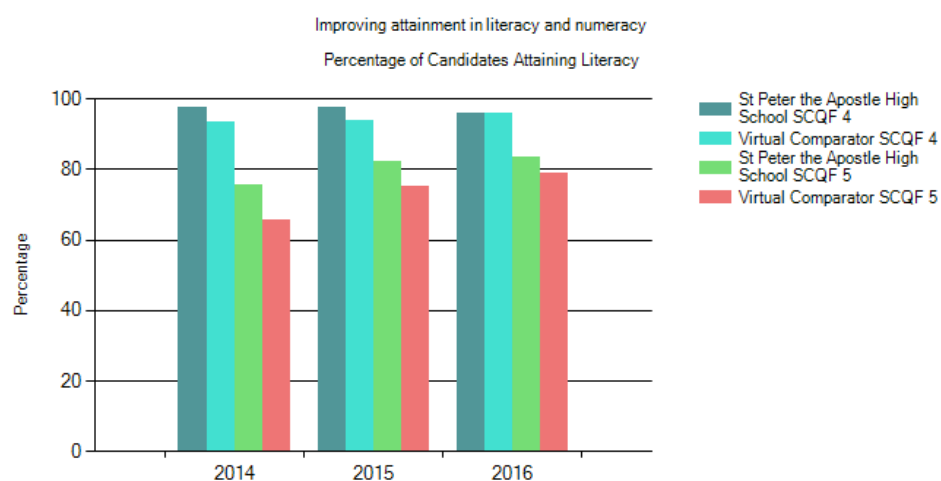
Performance in Numeracy at SCQF Level 4, 2015 is greater than your Virtual Comparator

Performance in Literacy at SCQF Level 5, 2015 is greater than your Virtual Comparator

Performance in Literacy at SCQF Level 4, 2014 is much greater than your Virtual Comparator

Looking at the measures separately, Literacy at SCQF Levels 4 and 5 are above the Virtual Comparator. In Numeracy SCQF level 4 is below the Virtual Comparator while at SCQF level 5 it is above. Insight notes Literacy Level 4 and Numeracy level 5 as being significant in the 2016 data.

## St Peter the Apostle High School



Testing found that the following comparisons were significant.

Performance in Numeracy at SCQF Level 4, 2015 is lower than your Virtual Comparator

Performance in Literacy at SCQF Level 4, 2015 is greater than your Virtual Comparator

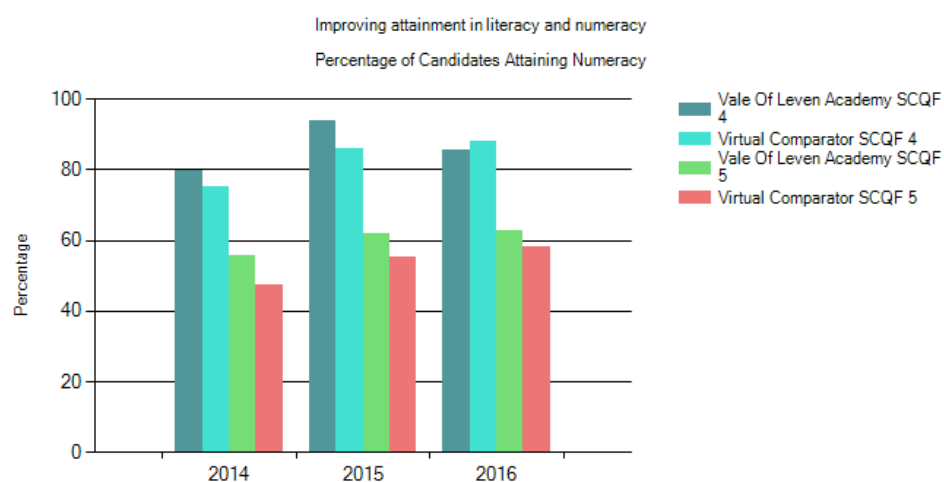
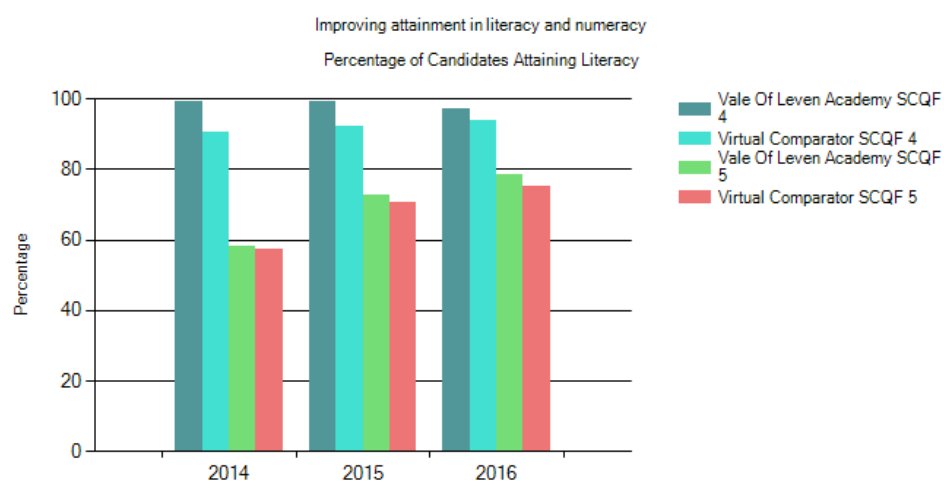
Performance in Literacy at SCQF Level 5, 2015 is greater than your Virtual Comparator

Performance in Literacy at SCQF Level 4, 2014 is greater than your Virtual Comparator

Performance in Literacy at SCQF Level 5, 2014 is greater than your Virtual Comparator

Looking at the measures separately, Literacy at SCQF Levels 4 and 5 are above the Virtual Comparator (only very slightly at level 4 – 0.14 percentage points). In Numeracy SCQF level 4 is above the Virtual Comparator while at SCQF level 5 it is below. Insight notes nothing significant in the 2016 data.

## Vale of Leven Academy



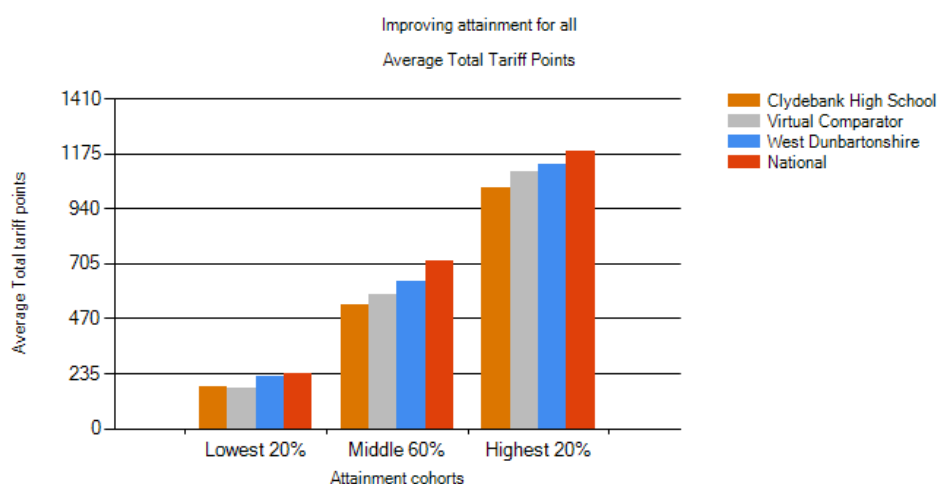
Testing found that the following comparisons were significant.

Performance in Literacy at SCQF Level 4, 2015 is much greater than your Virtual Comparator  
 Performance in Numeracy at SCQF Level 4, 2015 is much greater than your Virtual Comparator  
 Performance in Literacy at SCQF Level 4, 2014 is much greater than your Virtual Comparator  
 Performance in Numeracy at SCQF Level 5, 2014 is greater than your Virtual Comparator

Looking at the measures separately, Literacy at SCQF Levels 4 and 5 are above the Virtual Comparator. In Numeracy SCQF level 4 is below the Virtual Comparator while at SCQF level 5 it is above. Insight notes nothing significant in the 2016 data.

## Local Benchmarking Measure: Improving Attainment for All

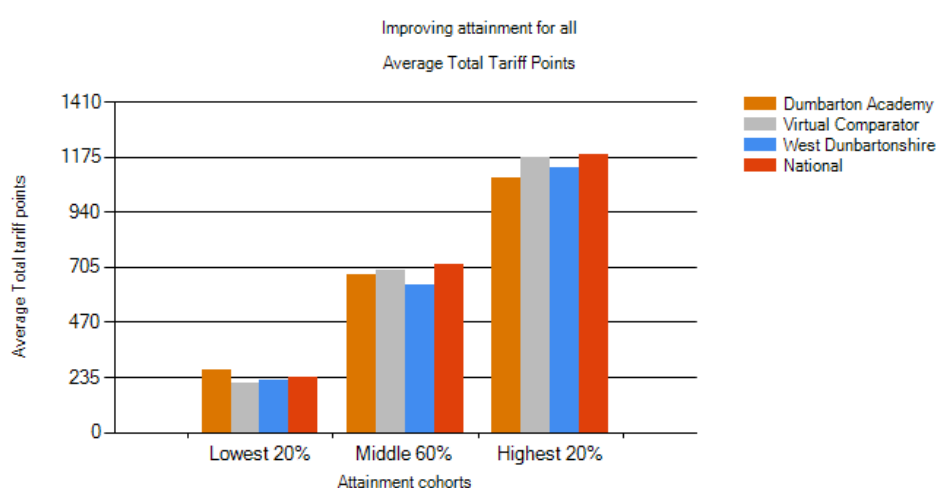
### Clydebank High School



Testing found that there were no significant comparisons for this measure.

Clydebank High School is above the Virtual Comparator in the Lowest 20% group, but below West Dunbartonshire and the National figure. In the Middle 60% and Highest 20% groups Clydebank High School is below the Virtual Comparator, West Dunbartonshire and the National figure. Insight notes nothing significant in the 2016 data.

### Dumbarton Academy

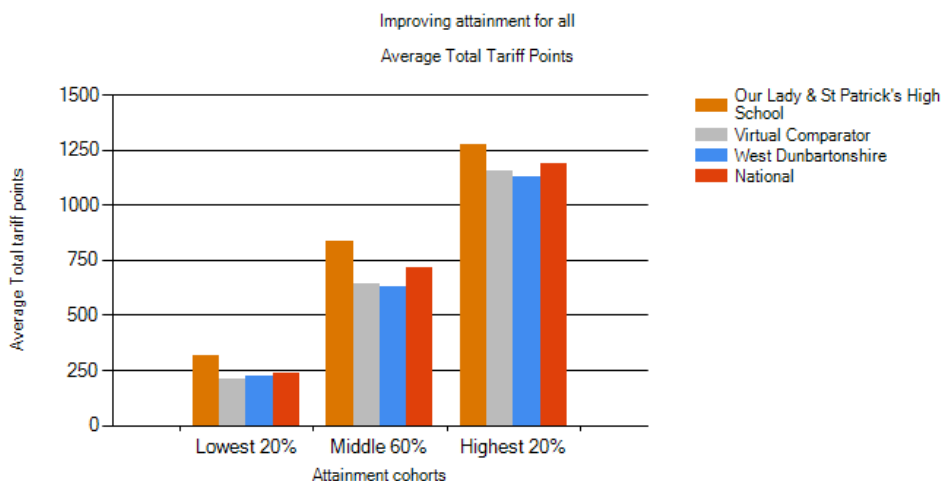


Testing found that there were no significant comparisons for this measure.

Dumbarton Academy is above the Virtual Comparator, West Dunbartonshire and the National measure for the Lowest 20% group. It is above West Dunbartonshire in the Middle 60% group, but

below the Virtual Comparator and National figure. In the Highest 20% group Dumbarton is below the Virtual Comparator, West Dunbartonshire and the National figure. Insight notes nothing significant in the 2016 data.

## Our Lady and St Patrick's High School



Testing found that the following comparisons were significant.

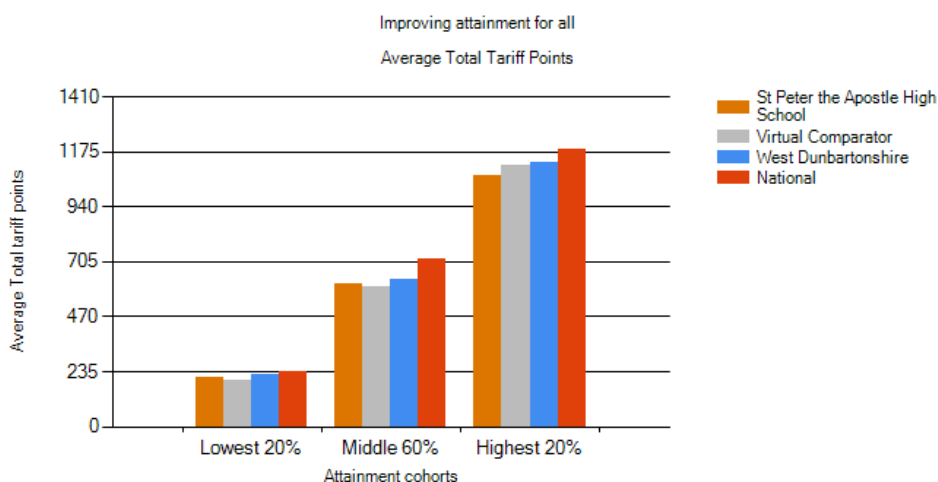
Performance in Middle 60% is much greater than your Virtual Comparator

Performance in Lowest 20% is greater than your Virtual Comparator

Performance in Highest 20% is greater than your Virtual Comparator

Our Lady and St. Patrick's High School is above the Virtual Comparator, West Dunbartonshire and the national figure in all three groups in this measure. Insight notes performance in all three groups as significant, with the middle 60% group being "Much Greater" than VC.

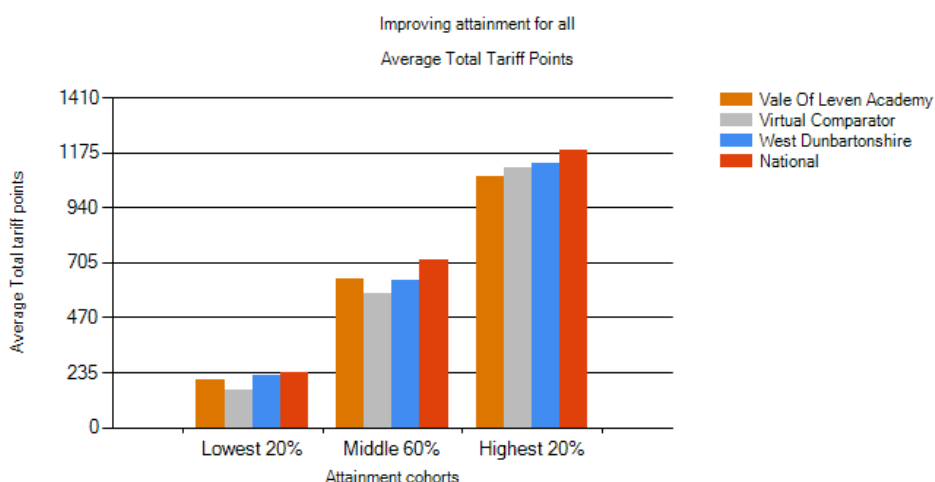
## St Peter the Apostle High School



Testing found that there were no significant comparisons for this measure.

St. Peter the Apostle High School is above the Virtual Comparator in the Lowest 20% group, but slightly below West Dunbartonshire and the National figure. In the Middle 60% it is above the Virtual Comparator, but slightly below West Dunbartonshire and the National figure. In the Highest 20% group St. Peter the Apostle High School is below the Virtual Comparator, West Dunbartonshire and the National figure. Insight notes nothing significant in the 2016 data.

## Vale of Leven Academy

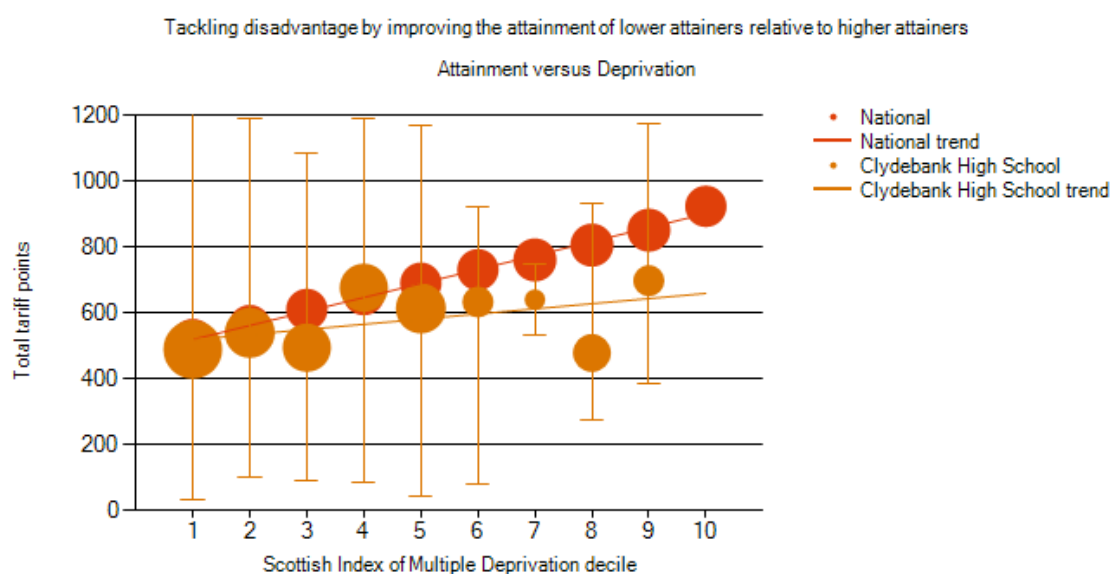


Testing found that there were no significant comparisons for this measure.

Vale of Leven Academy is above the Virtual Comparator in the Lowest 20% group, but slightly below West Dunbartonshire and the National figure. In the Middle 60% it is above the Virtual Comparator, slightly above West Dunbartonshire and the National figure. In the Highest 20% group in Vale of Leven Academy is below the Virtual Comparator, West Dunbartonshire and the National figure. Insight notes nothing significant in the 2016 data.

## Local Benchmarking Measure: Attainment versus Deprivation

### Clydebank High School



Testing found that the following comparisons were significant.

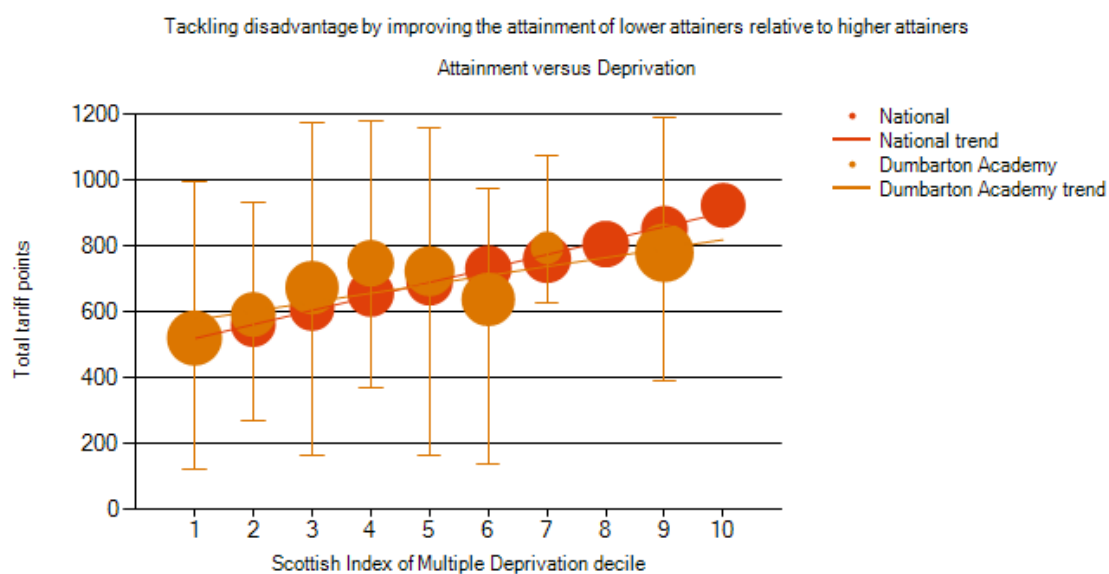
In SIMD decile 8, your performance is much lower than the National Establishment

In SIMD decile 3, your performance is lower than the National Establishment

In SIMD decile 9, your performance is lower than the National Establishment

Only in Decile 4 in Clydebank High School is the Average Total Tariff Points above the National figure. Every other decile is below. Insight notes the difference in Deciles 3, 8 and 9 to be significant.

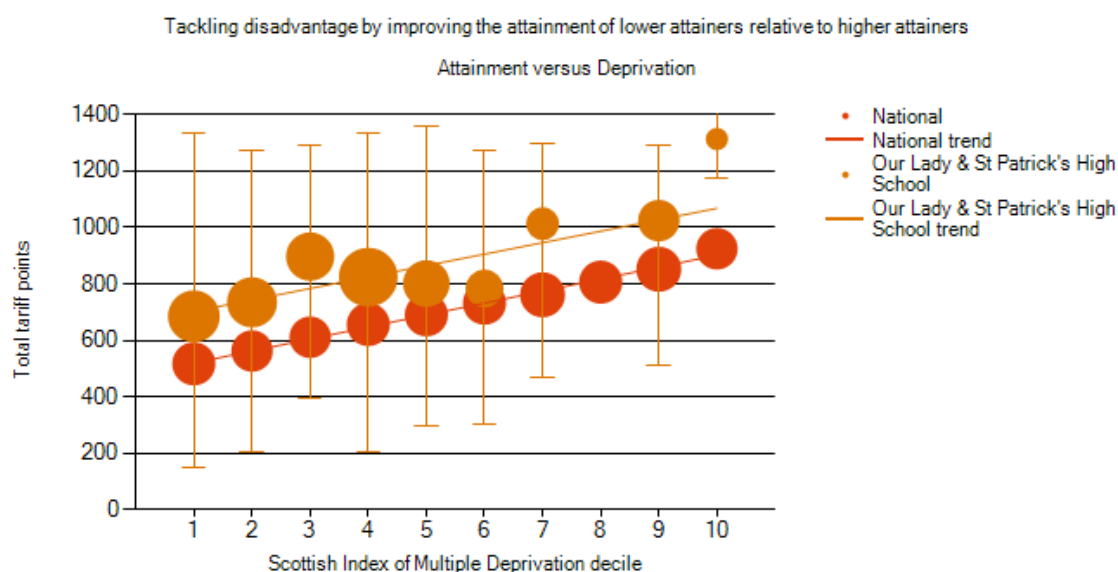
## Dumbarton Academy



Testing found that there were no significant comparisons for this measure.

Only in Deciles 6 & 9 in Dumbarton Academy are the Average Total Tariff Points below the National figure. Dumbarton has no pupils in deciles 8 and 10. Every other decile is above the National figure. Insight notes nothing significant in the 2016 data.

## Our Lady and St Patrick's High School



Testing found that the following comparisons were significant.

In SIMD decile 3, your performance is much greater than the National Establishment

In SIMD decile 7, your performance is much greater than the National Establishment

In SIMD decile 1, your performance is greater than the National Establishment

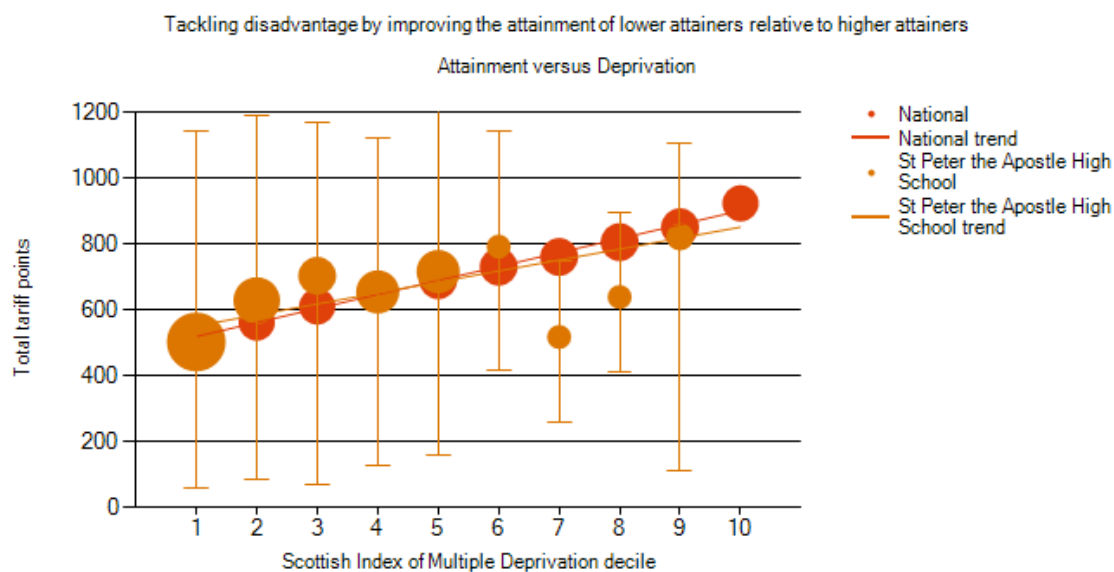
In SIMD decile 2, your performance is greater than the National Establishment

In SIMD decile 4, your performance is greater than the National Establishment

In SIMD decile 5, your performance is greater than the National Establishment

Our Lady and St. Patrick's High School has no pupils in Decile 8, in all other Deciles the Average Total Tariff Points are above the National figure. Insight notes performance in deciles 1, 2, 3, 4, 5 and 7 to be significant in the 2016 data.

## St Peter the Apostle High School



Testing found that the following comparisons were significant.

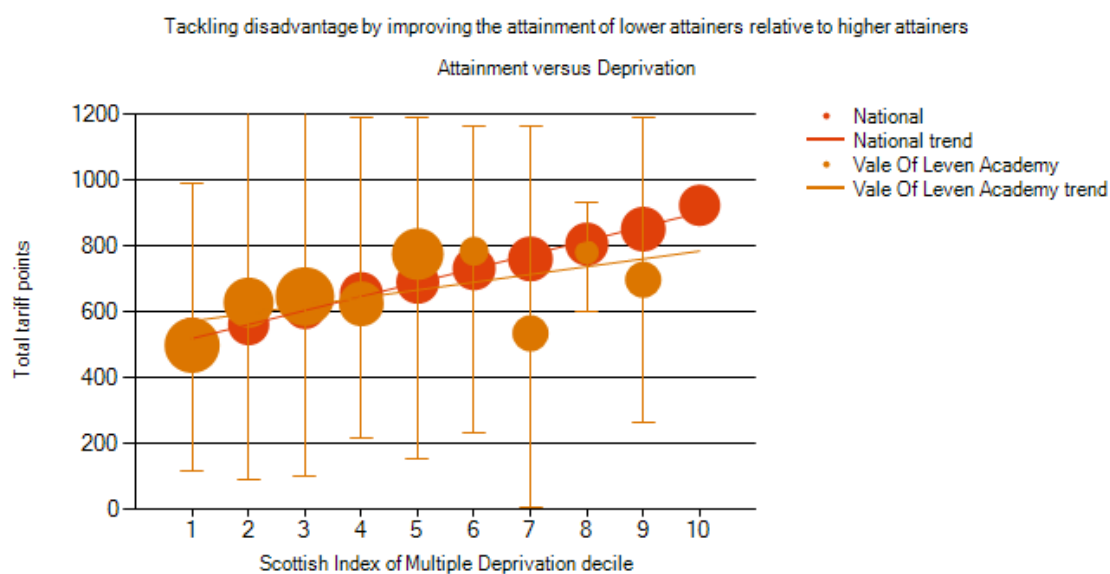
In SIMD decile 7, your performance is much lower than the National Establishment

In SIMD decile 8, your performance is lower than the National Establishment

In SIMD decile 3, your performance is greater than the National Establishment

The Average Total Tariff Points in Deciles 1, 4, 7, 8 and 9 in St. Peter the Apostle High School are below the National figure. Deciles 2, 3, 5 and 6 are above. SPTA has no pupils in decile 10. Insight notes the results in Deciles 3, 7 and 8 as significant in the 2016 data.

## Vale of Leven Academy



Testing found that the following comparisons were significant.

In SIMD decile 7, your performance is much lower than the National Establishment

In SIMD decile 9, your performance is lower than the National Establishment

The Average Total Tariff Points in Deciles 1, 4, 7, 8 and 9 in Vale of Leven Academy are below the National figure. Deciles 2, 3, 5 and 6 are above. Vale of Leven Academy has no pupils in decile 10. Insight notes the results in Deciles 7 and 9 as significant in the 2016 data.