

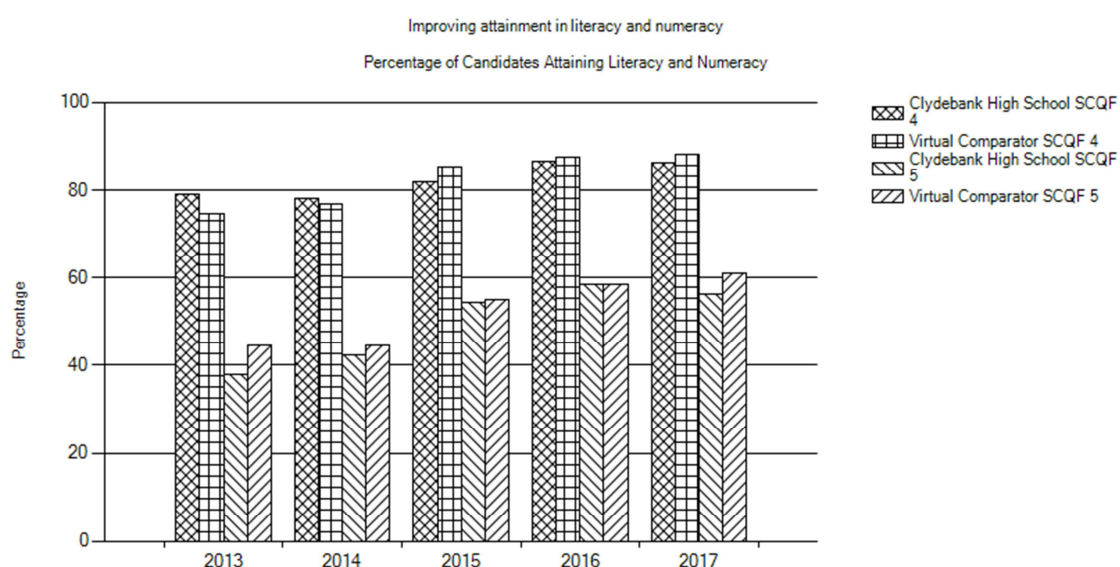
Appendix 1 – Analysis of Data from Insight – December 2017

Introduction

This paper gives a breakdown of the performance of each of our secondary schools in relation to three of the four key national measures from Insight. For each measure, the performance of each school is given in the form of a graphical chart, and a blue box containing 'significant' information determined by Insight. Underneath each blue box, is a commentary of any key features.

Local Benchmarking Measure: Literacy and Numeracy

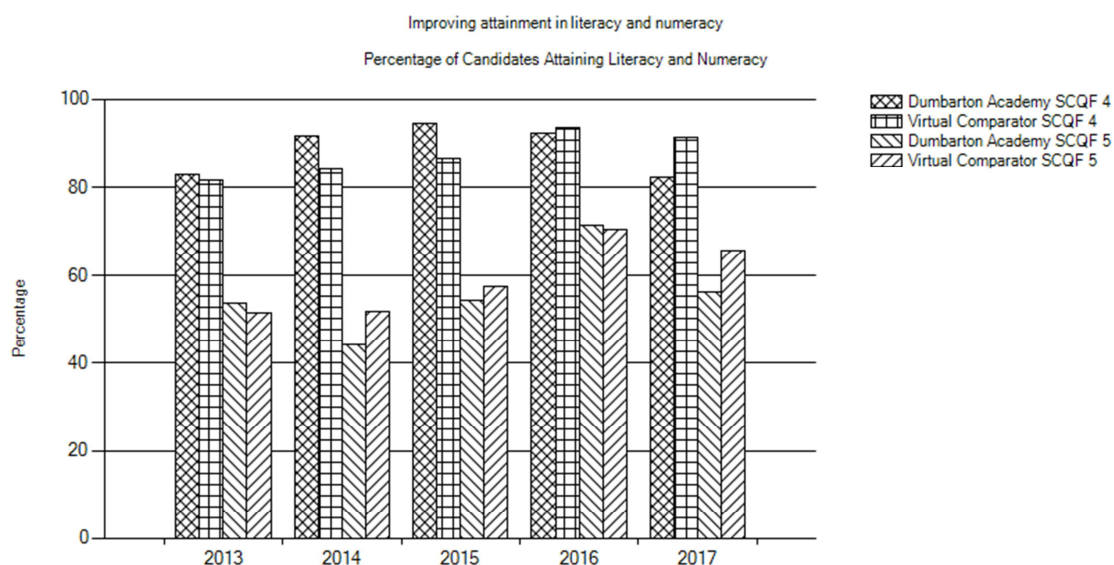
Clydebank High School



Testing found that there were no significant comparisons for this measure.

Clydebank High School has stayed at the same level as the previous year at SCQF Level 4 and has declined very slightly at SCQF Level 5. It is slightly below its Virtual Comparator (VC) at SCQF Levels 4 & 5. Insight notes nothing significant in the 2017 data.

Dumbarton Academy



Testing found that the following comparisons were significant.

Performance in Literacy and Numeracy at SCQF Level 4, 2017 is lower than your Virtual Comparator

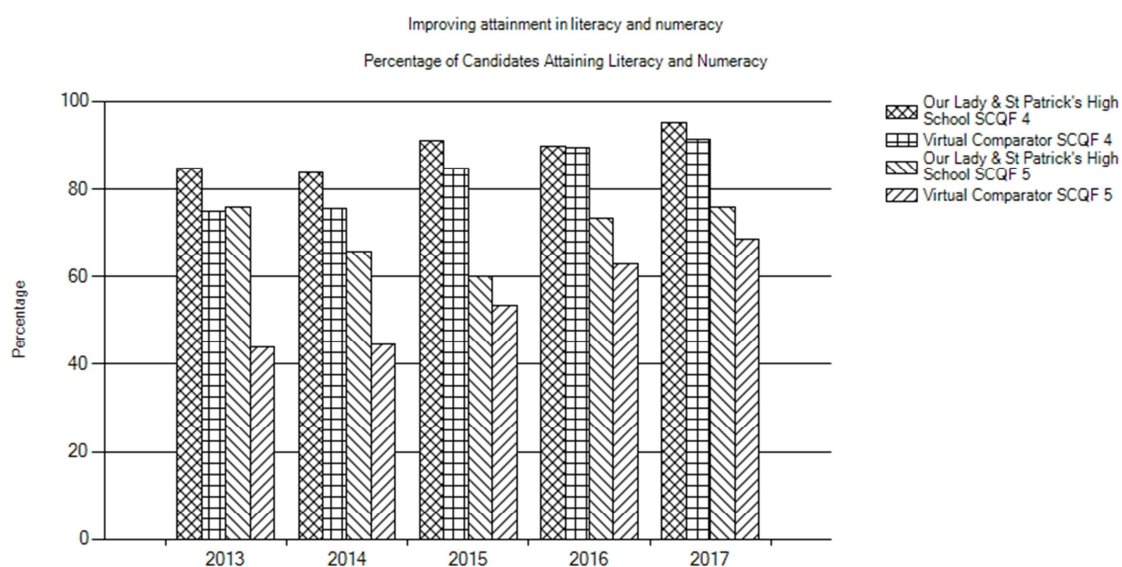
Performance in Literacy and Numeracy at SCQF Level 5, 2017 is lower than your Virtual Comparator

Performance in Literacy and Numeracy at SCQF Level 4, 2015 is much greater than your Virtual Comparator

Performance in Literacy and Numeracy at SCQF Level 4, 2014 is greater than your Virtual Comparator

In both SCQF Levels 4 & 5, Dumbarton Academy has declined from the previous year and in 2017 is behind its VC. Insight notes performance at both SCQF Levels 4 & 5 is significant in the 2017 data.

Our Lady and St Patrick's High School



Testing found that the following comparisons were significant.

Performance in Literacy and Numeracy at SCQF Level 5, 2017 is greater than your Virtual Comparator

Performance in Literacy and Numeracy at SCQF Level 5, 2016 is greater than your Virtual Comparator

Performance in Literacy and Numeracy at SCQF Level 4, 2015 is greater than your Virtual Comparator

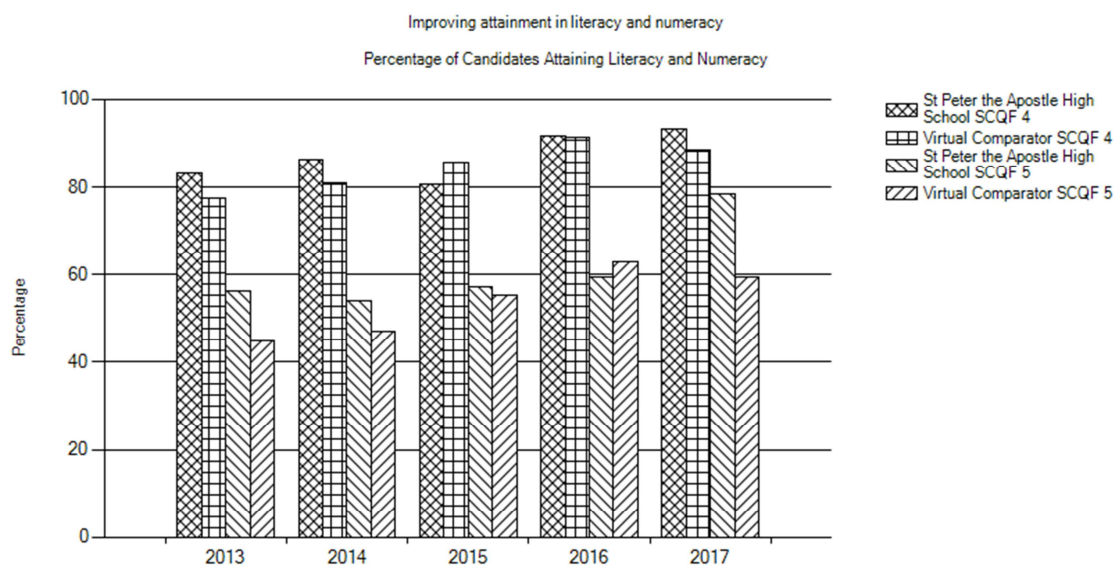
Performance in Literacy and Numeracy at SCQF Level 5, 2014 is much greater than your Virtual Comparator

Performance in Literacy and Numeracy at SCQF Level 4, 2014 is greater than your Virtual Comparator

Performance in Literacy and Numeracy at SCQF Level 5, 2013 is much greater than your Virtual Comparator

In both SCQF Levels 4 & 5, Our Lady and St Patrick's High School has improved from the previous year and in 2017 is ahead of its VC. Insight notes performance at SCQF Level 5 is significant in the 2017 data.

St Peter the Apostle High School



Testing found that the following comparisons were significant.

Performance in Literacy and Numeracy at SCQF Level 5, 2017 is much greater than your Virtual Comparator

Performance in Literacy and Numeracy at SCQF Level 4, 2017 is greater than your Virtual Comparator

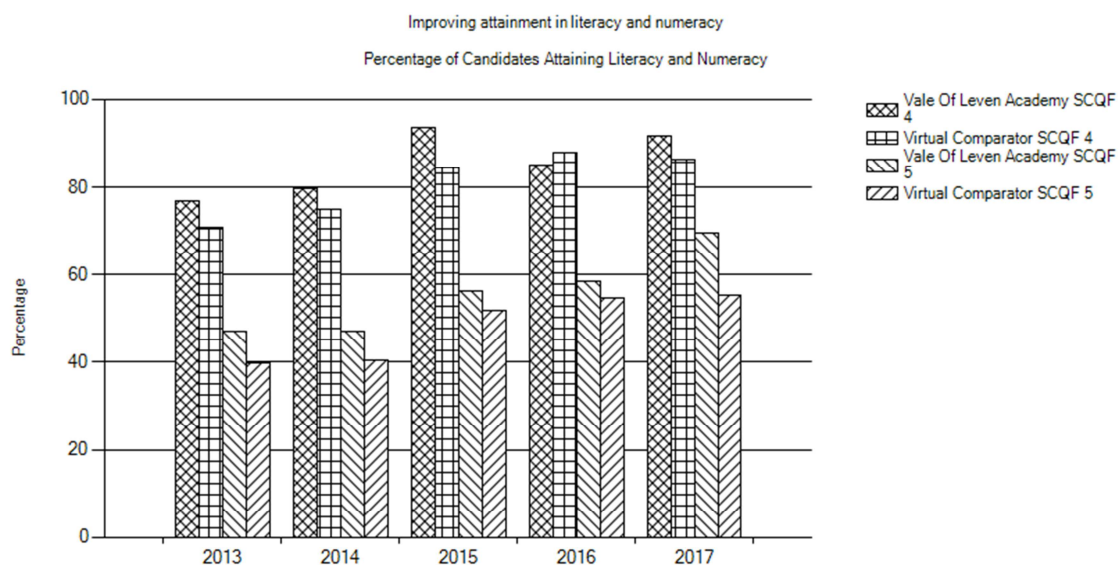
Performance in Literacy and Numeracy at SCQF Level 4, 2014 is greater than your Virtual Comparator

Performance in Literacy and Numeracy at SCQF Level 4, 2013 is greater than your Virtual Comparator

Performance in Literacy and Numeracy at SCQF Level 5, 2013 is greater than your Virtual Comparator

In both SCQF Levels 4 & 5, St Peter the Apostle High School has improved from the previous year and in 2017 is ahead of its VC. Insight notes performance at both SCQF Levels 4 & 5 is significant in the 2017 data.

Vale of Leven Academy



Testing found that the following comparisons were significant.

Performance in Literacy and Numeracy at SCQF Level 5, 2017 is greater than your Virtual Comparator

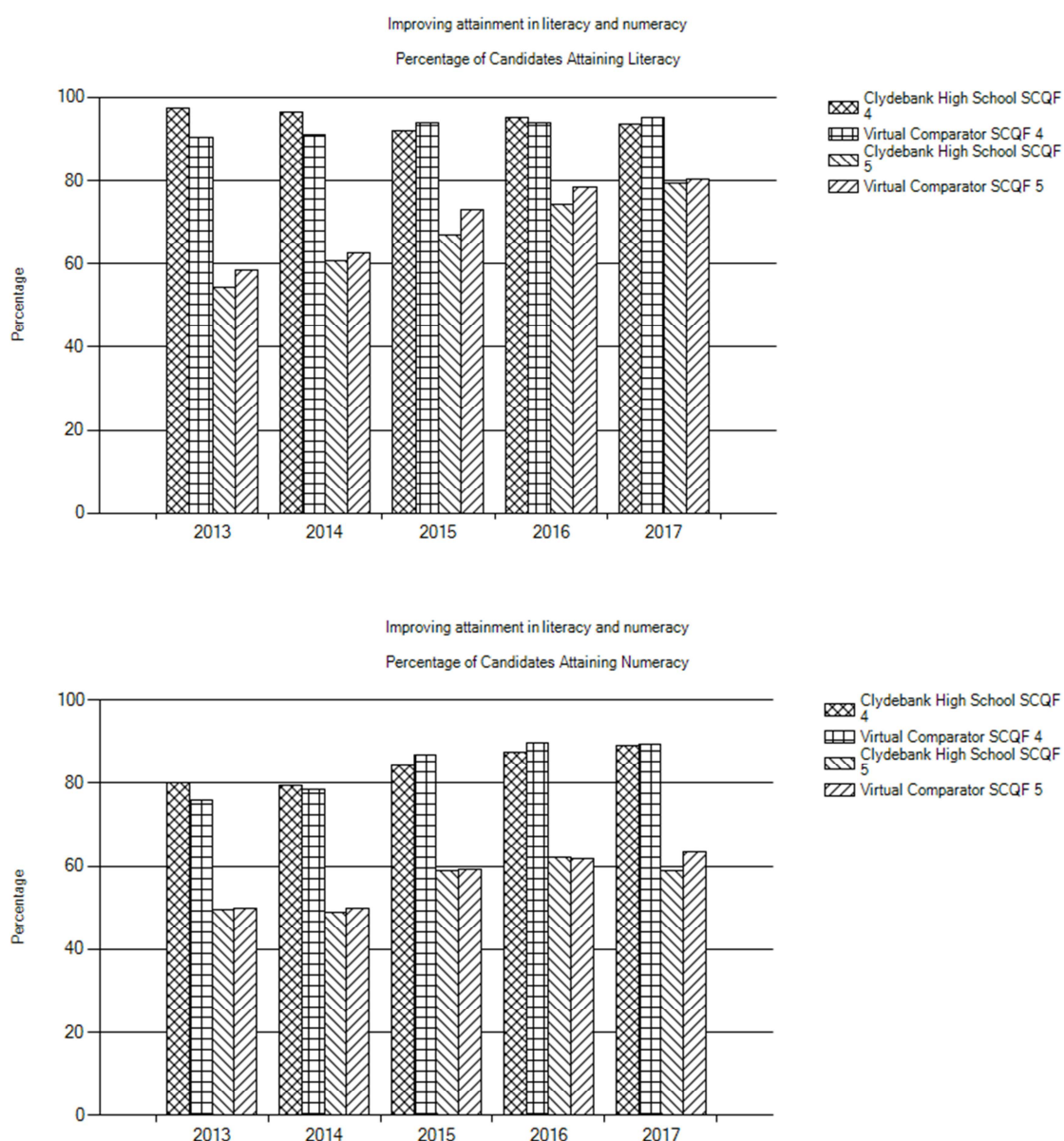
Performance in Literacy and Numeracy at SCQF Level 4, 2015 is much greater than your Virtual Comparator

Performance in Literacy and Numeracy at SCQF Level 4, 2013 is greater than your Virtual Comparator

In both SCQF Levels 4 & 5, St Peter the Apostle High School has improved from the previous year and in 2017 is ahead of its VC. Insight notes performance at SCQF Level 5 is significant in the 2017 data.

Local Benchmarking Measure: Literacy and Numeracy by Measure

Clydebank High School



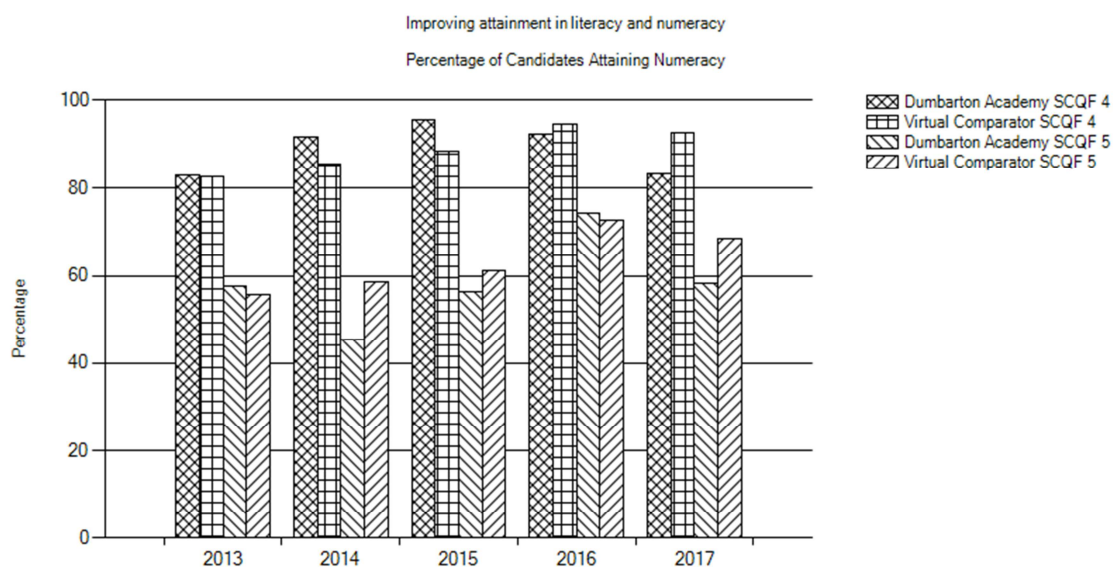
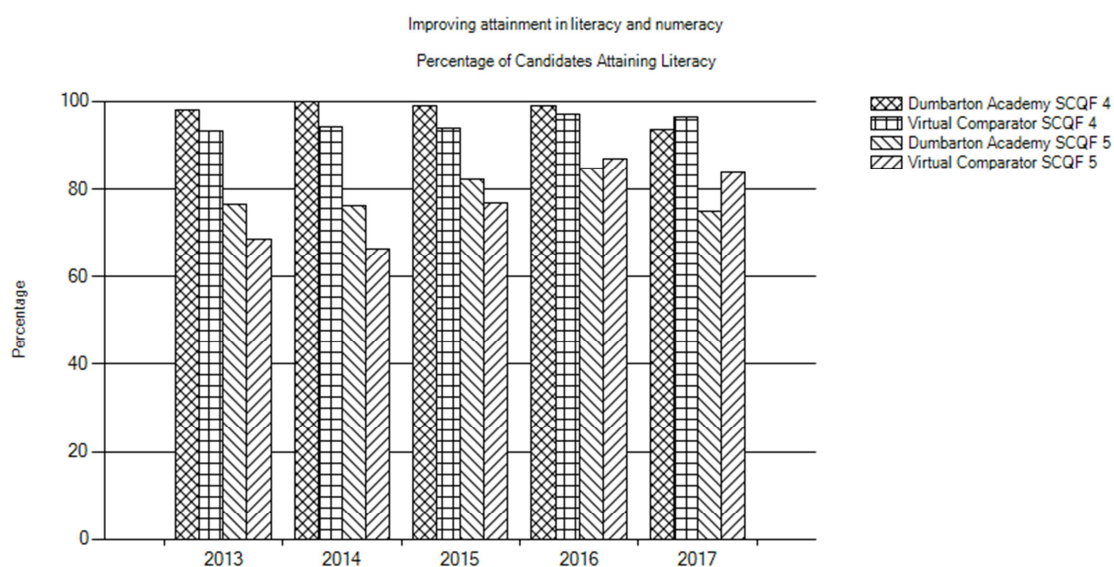
Testing found that the following comparisons were significant.

Performance in Literacy at SCQF Level 4, 2014 is much greater than your Virtual Comparator

Performance in Literacy at SCQF Level 4, 2013 is much greater than your Virtual Comparator

Looking at the measures separately, performance in Literacy at SCQF Levels 4 & 5 is slightly below the VC. In Numeracy SCQF level 4 is only very slightly below the VC at SCQF level 5 it is below VC. Insight notes nothing significant in the 2017 data.

Dumbarton Academy



Testing found that the following comparisons were significant.

Performance in Numeracy at SCQF Level 4, 2017 is much lower than your Virtual Comparator

Performance in Literacy at SCQF Level 5, 2017 is lower than your Virtual Comparator

Performance in Numeracy at SCQF Level 5, 2017 is lower than your Virtual Comparator

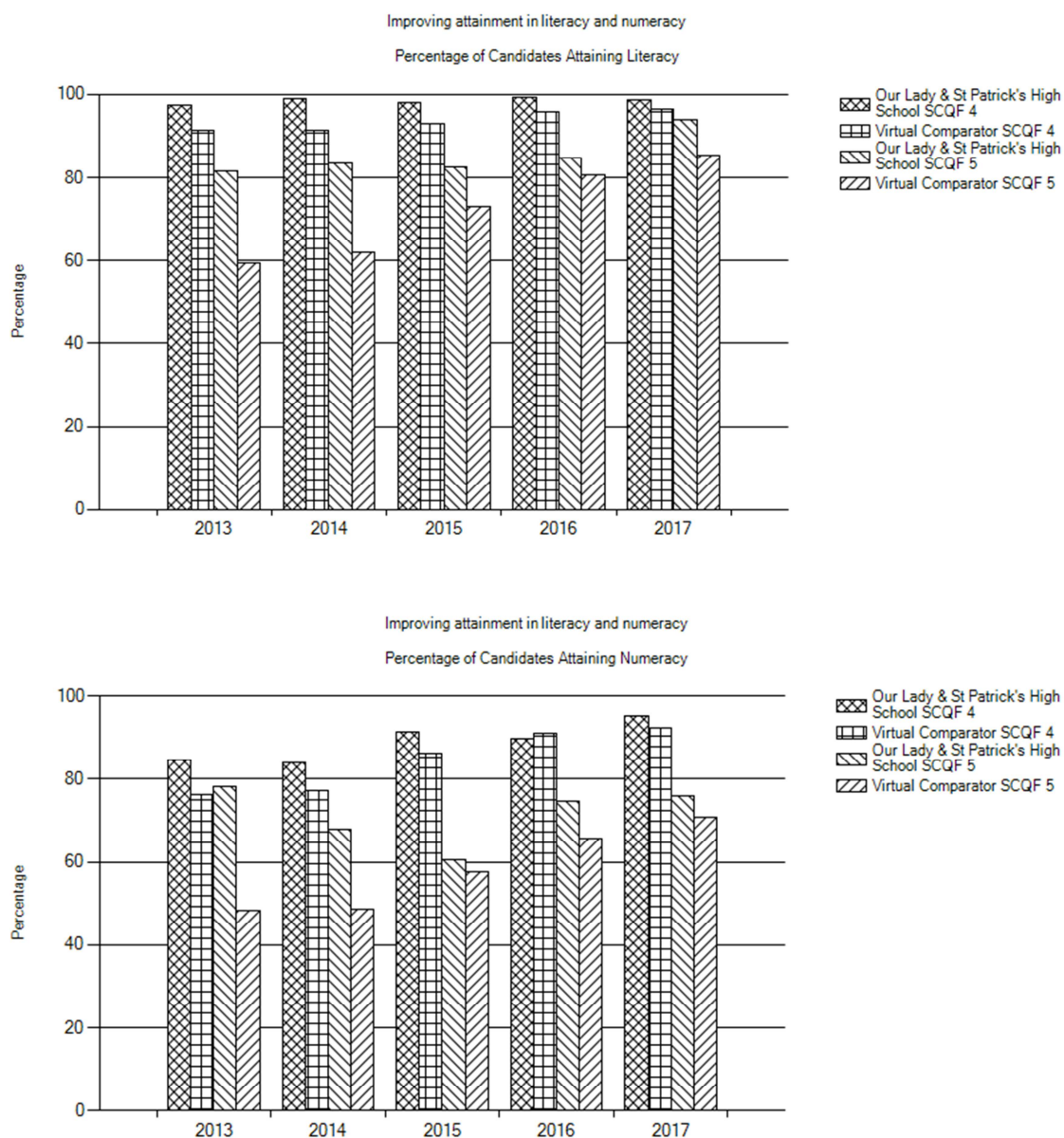
Performance in Literacy at SCQF Level 4, 2015 is much greater than your Virtual Comparator

Performance in Numeracy at SCQF Level 4, 2015 is much greater than your Virtual Comparator

Performance in Literacy at SCQF Level 4, 2014 is much greater than your Virtual Comparator

Looking at the measures separately, Literacy and Numeracy at both SCQF Level 4 and 5 are below the VC. Insight notes performance in Numeracy at SCQF Level 4 and both Literacy and Numeracy at SCQF Level 5 is significant in the 2017 data.

Our Lady and St Patrick's High School



Testing found that the following comparisons were significant.

Performance in Literacy at SCQF Level 5, 2017 is greater than your Virtual Comparator

Performance in Literacy at SCQF Level 4, 2016 is greater than your Virtual Comparator

Performance in Numeracy at SCQF Level 5, 2016 is greater than your Virtual Comparator

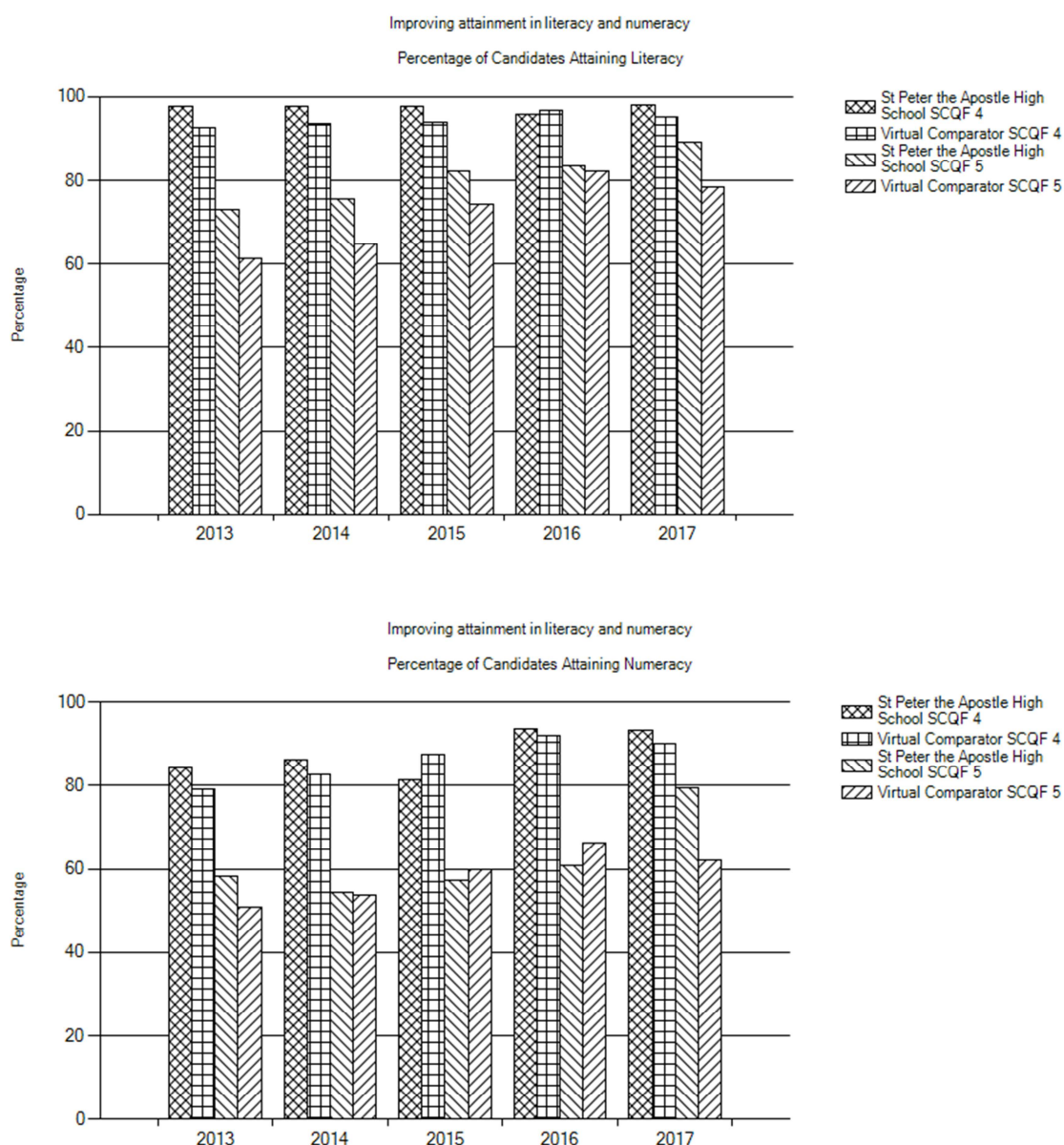
Performance in Literacy at SCQF Level 4, 2015 is much greater than your Virtual Comparator

Performance in Literacy at SCQF Level 5, 2015 is greater than your Virtual Comparator

Performance in Literacy at SCQF Level 4, 2014 is much greater than your Virtual Comparator

Looking at the measures separately, both Literacy & Numeracy at both SCQF Levels 4 and 5 are all above the VC. Insight notes performance in Literacy at SCQF Level 5 as being significant in the 2017 data.

St Peter the Apostle High School

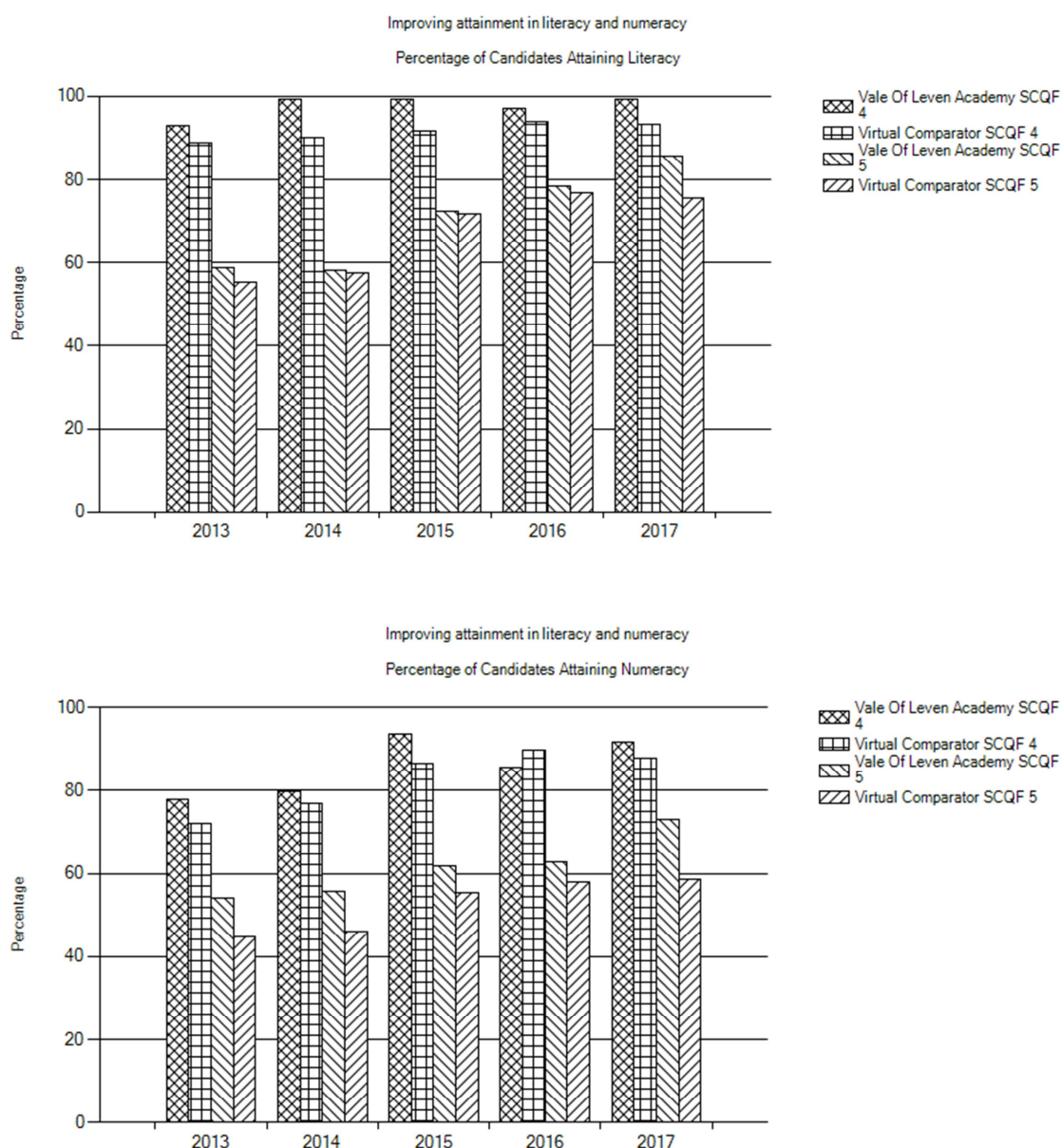


Testing found that the following comparisons were significant.

Performance in Literacy at SCQF Level 5, 2017 is much greater than your Virtual Comparator
 Performance in Numeracy at SCQF Level 5, 2017 is much greater than your Virtual Comparator
 Performance in Numeracy at SCQF Level 4, 2015 is lower than your Virtual Comparator
 Performance in Literacy at SCQF Level 4, 2015 is greater than your Virtual Comparator
 Performance in Literacy at SCQF Level 5, 2015 is greater than your Virtual Comparator
 Performance in Literacy at SCQF Level 4, 2014 is greater than your Virtual Comparator

Looking at the measures separately, both Literacy & Numeracy at both SCQF Levels 4 and 5 are all above the VC. Insight notes performance in both Literacy & Numeracy at SCQF Level 5 as being significant in the 2017 data.

Vale of Leven Academy



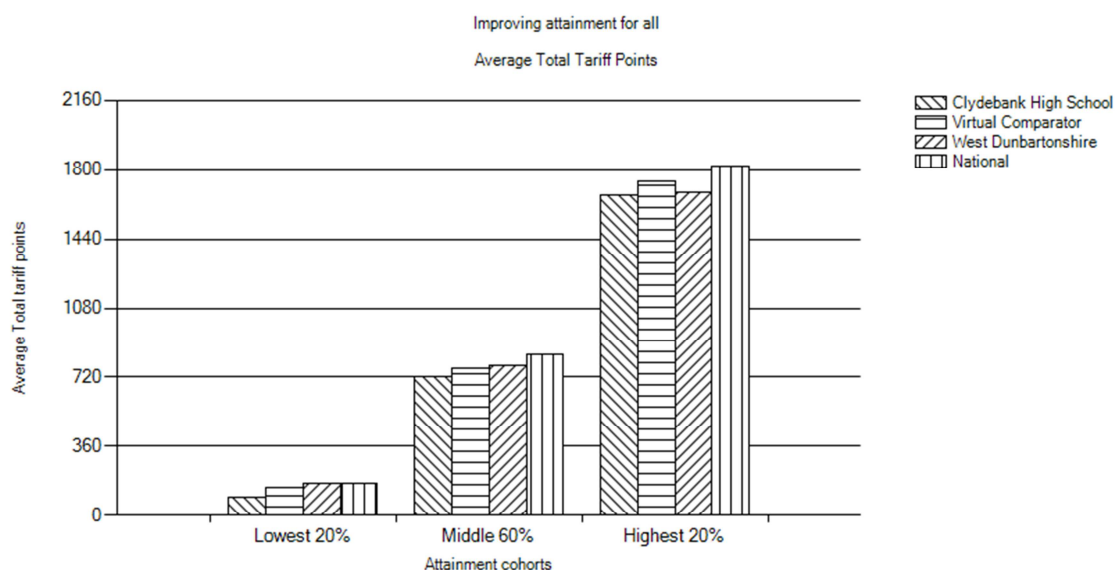
Testing found that the following comparisons were significant.

Performance in Literacy at SCQF Level 4, 2017 is much greater than your Virtual Comparator
 Performance in Literacy at SCQF Level 5, 2017 is much greater than your Virtual Comparator
 Performance in Numeracy at SCQF Level 5, 2017 is greater than your Virtual Comparator
 Performance in Literacy at SCQF Level 4, 2015 is much greater than your Virtual Comparator
 Performance in Numeracy at SCQF Level 4, 2015 is much greater than your Virtual Comparator
 Performance in Literacy at SCQF Level 4, 2014 is much greater than your Virtual Comparator

Looking at the measures separately, both Literacy & Numeracy at both SCQF Levels 4 and 5 are all above the VC. Insight notes performance in both Literacy & Numeracy at SCQF Level 4 and Numeracy at SCQF Level 5 as being significant in the 2017 data.

Local Benchmarking Measure: Improving Attainment for All

Clydebank High School

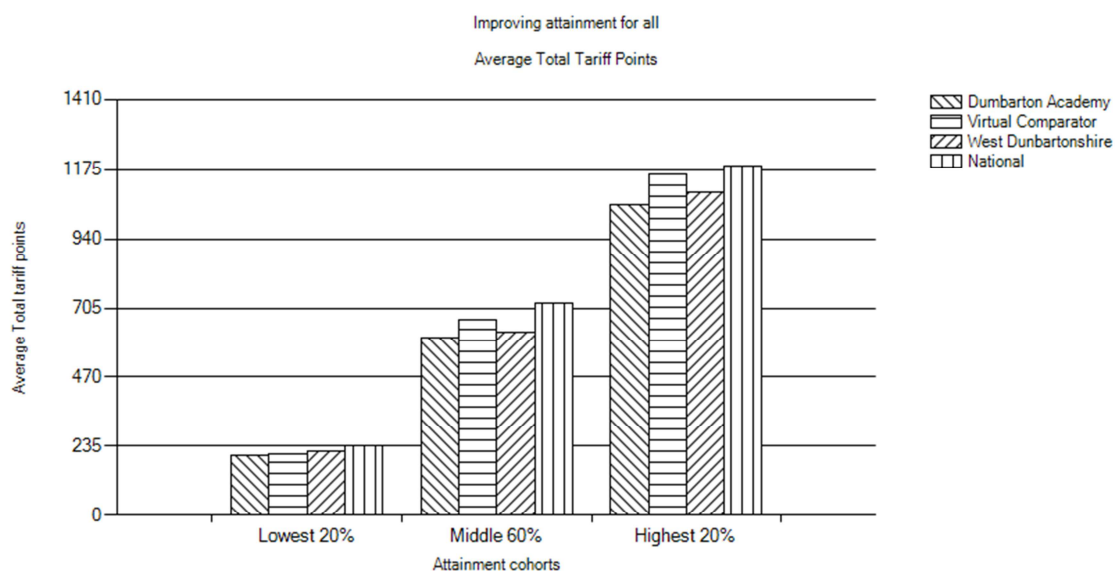


Testing found that the following comparisons were significant.

Performance in Lowest 20% is lower than your Virtual Comparator

Clydebank High School is below the VC figure in the Lowest 20%, Middle 60% and Highest 20% groups. Insight notes performance in the Lowest 20% group to be significant in the 2017 data.

Dumbarton Academy

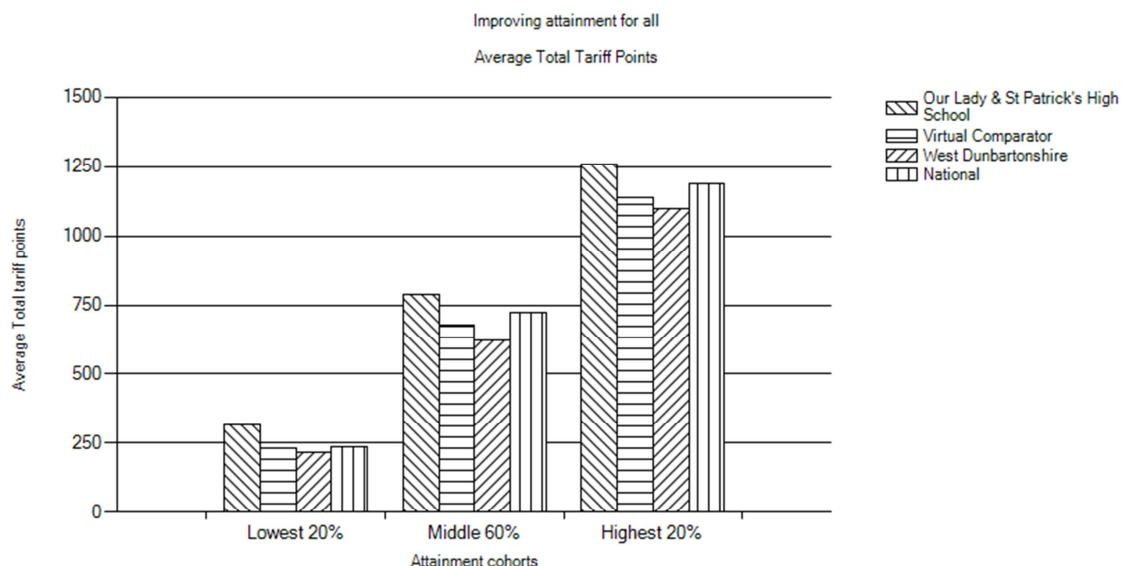


Testing found that the following comparisons were significant.

Performance in Highest 20% is lower than your Virtual Comparator

Dumbarton Academy is below the VC for all three groups. Insight notes performance in the Highest 20% group to be significant in the 2017 data.

Our Lady and St Patrick's High School



Testing found that the following comparisons were significant.

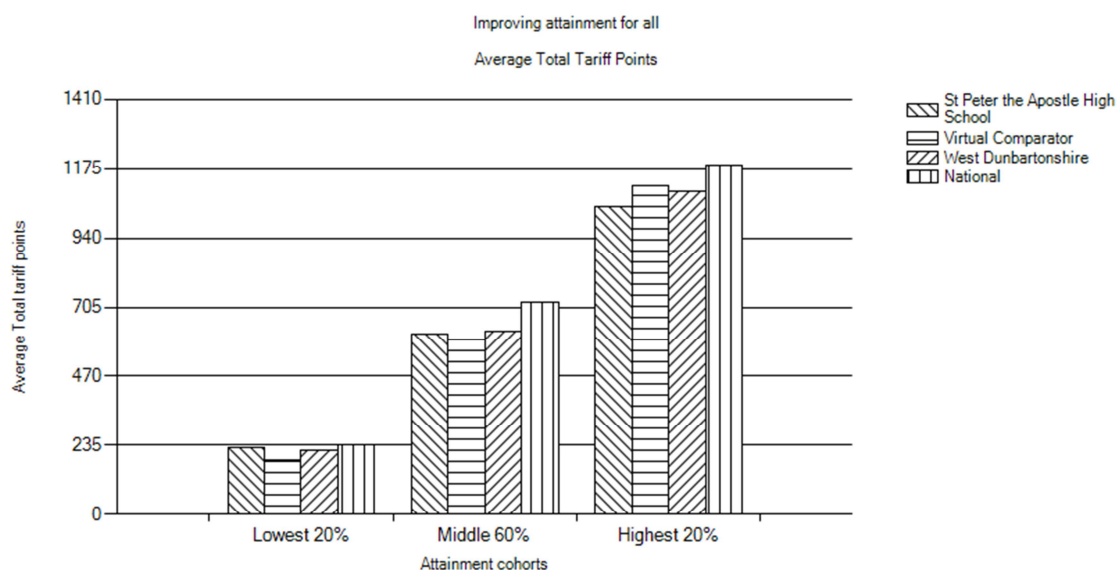
Performance in Lowest 20% is greater than your Virtual Comparator

Performance in Middle 60% is greater than your Virtual Comparator

Performance in Highest 20% is greater than your Virtual Comparator

Our Lady and St. Patrick's High School is above the VC in all three groups in this measure. Insight notes performance in all three groups as significant in the 2017 data.

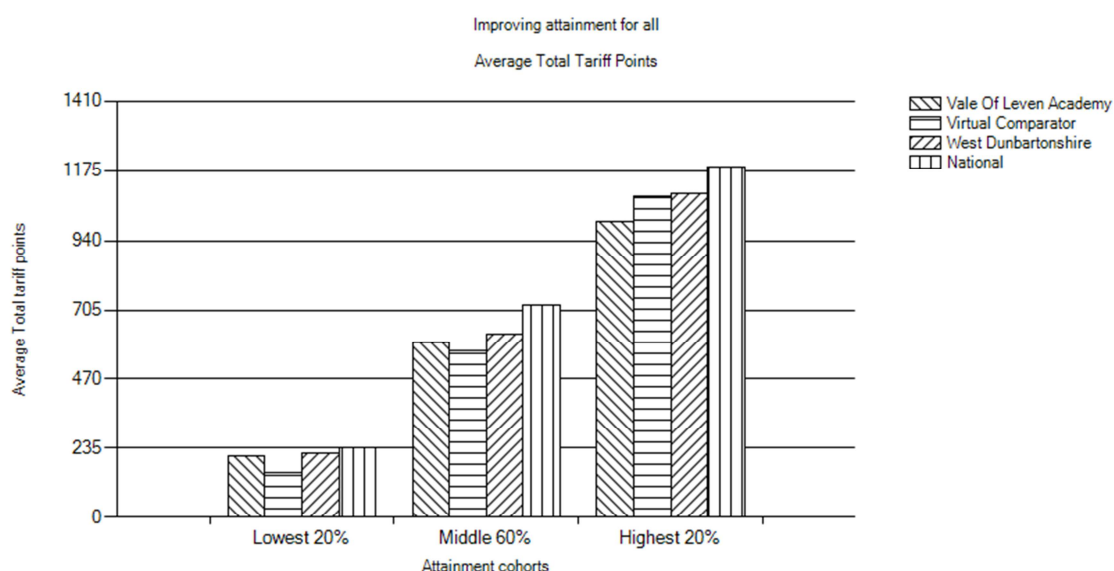
St Peter the Apostle High School



Testing found that there were no significant comparisons for this measure.

St. Peter the Apostle High School is above the VC in the Lowest 20% and Middle 60% groups. It is below VC in the Highest 20% group. Insight notes nothing significant in the 2017 data.

Vale of Leven Academy



Testing found that the following comparisons were significant.

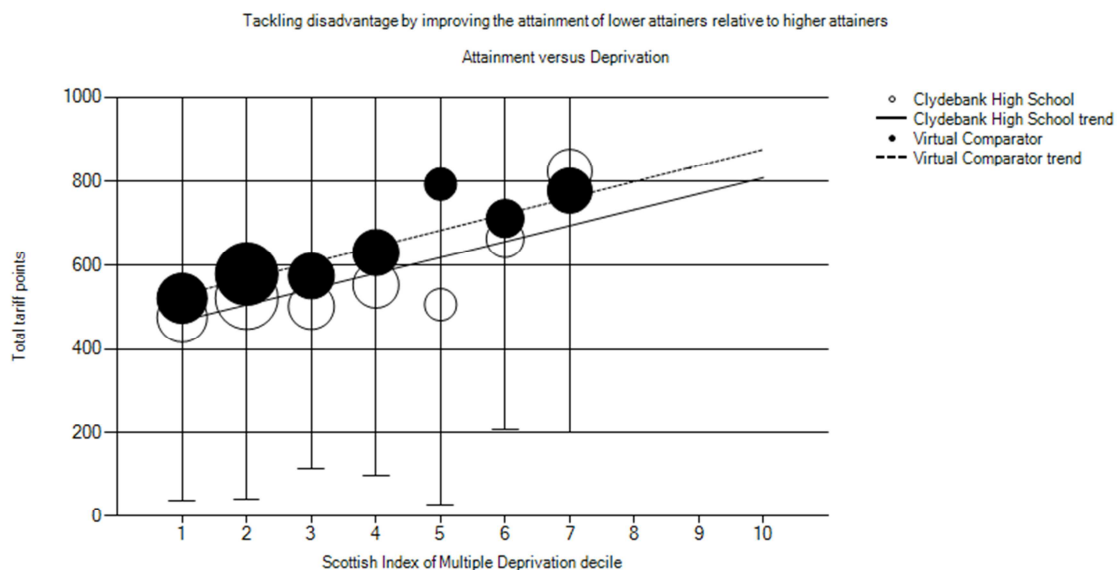
Performance in Highest 20% is lower than your Virtual Comparator

Vale of Leven Academy is above the VC in the Lowest 20% and Middle 20% groups, but below VC in the Highest 20% group. Insight notes performance in the Highest 20% group as significant in the 2017 data.

Local Benchmarking Measure: Attainment versus Deprivation

Note: due to the number of young people in each decile, we have redacted some of the information for some of the schools in the following charts to prevent identification of individuals.

Clydebank High School

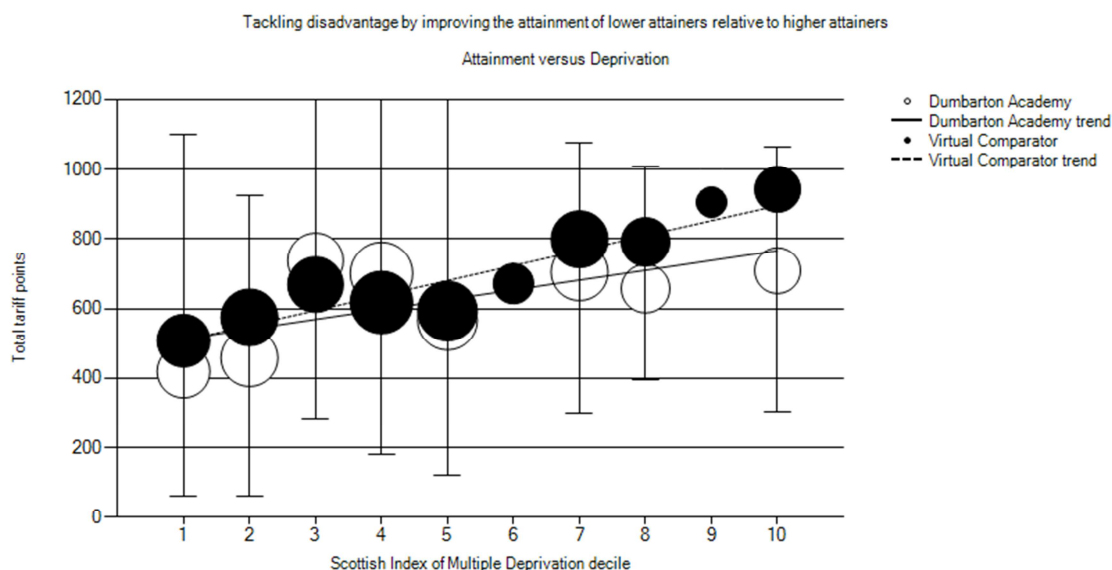


Testing found that the following comparisons were significant.

In SIMD decile 5, your performance is much lower than the Virtual Comparator

Only in Decile 7 in Clydebank High School is the Average Total Tariff Points above the VC. The school has no pupils in Decile 10. Every other decile is below VC. Insight notes the difference in Decile 5 to be significant.

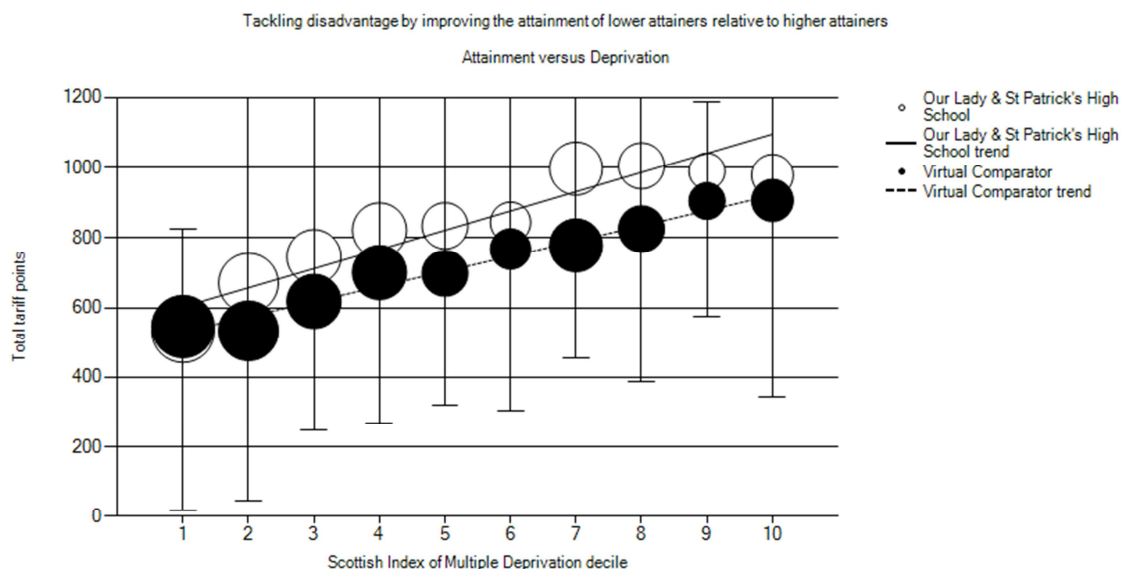
Dumbarton Academy



Testing found that there were no significant comparisons for this measure.

In Deciles 3, 4 & 9 Dumbarton Academy's Average Total Tariff Points are above the VC. Every other decile is below the VC. Insight notes nothing significant in the 2017 data.

Our Lady and St Patrick's High School



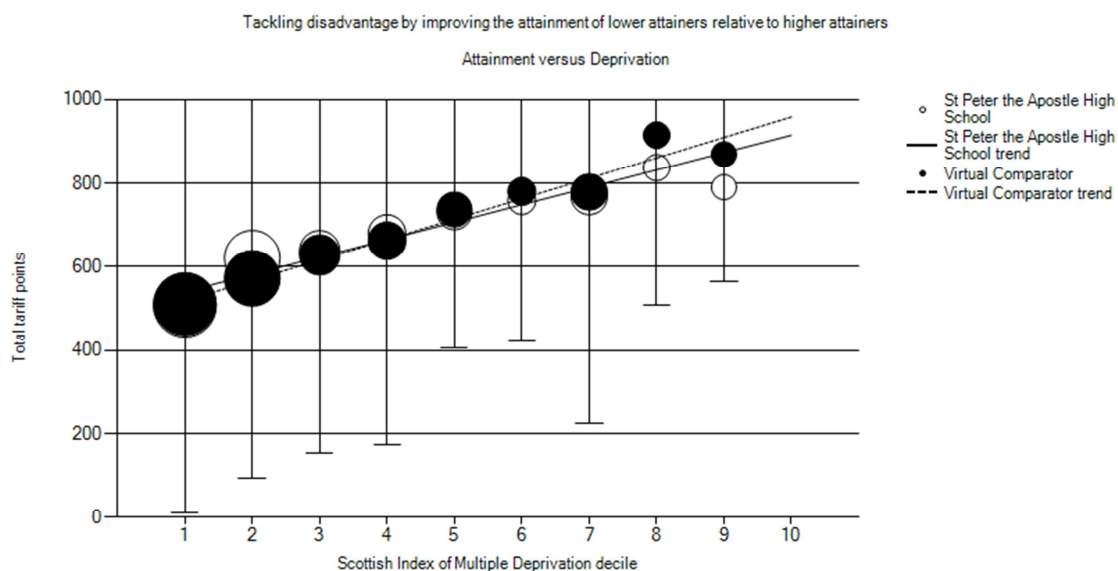
Testing found that the following comparisons were significant.

In SIMD decile 7, your performance is much greater than the Virtual Comparator

In SIMD decile 2, your performance is greater than the Virtual Comparator

In Our Lady and St. Patrick's High School, in all Deciles except 1, the Average Total Tariff Points are above the VC. In Decile 1 it is very slightly below VC. Insight notes performance in deciles 2 and 7 to be significant in the 2017 data.

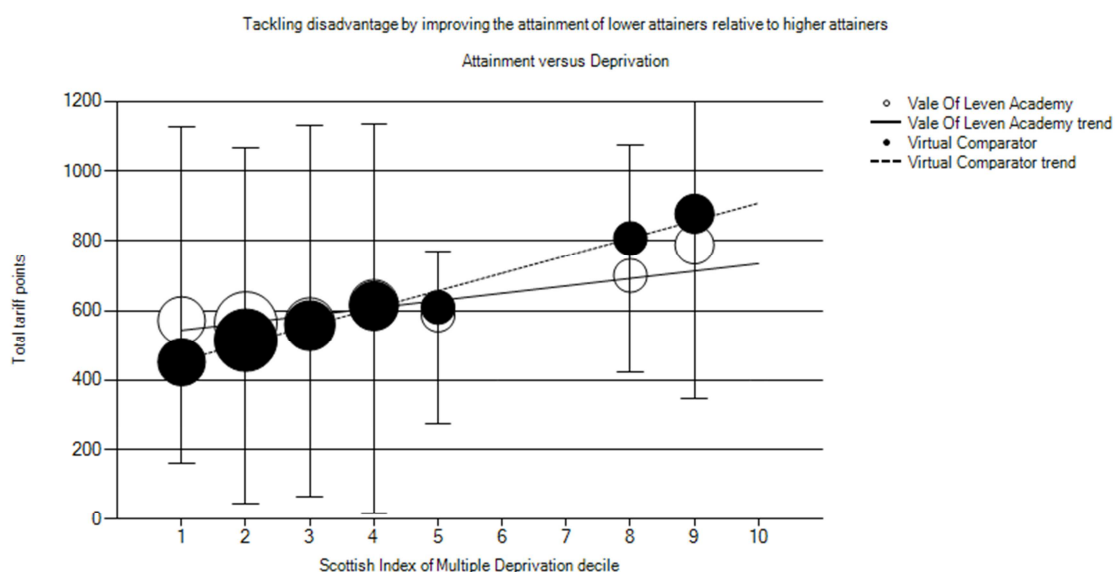
St Peter the Apostle High School



Testing found that there were no significant comparisons for this measure.

The Average Total Tariff Points in Deciles 1, 5, 6, 7, 8 and 9 in St. Peter the Apostle High School are below the VC. Deciles 2, 3, and 4 are above. SPTA has no pupils in decile 10. Insight notes nothing significant in the 2017 data.

Vale of Leven Academy



Testing found that the following comparisons were significant.

In SIMD decile 1, your performance is greater than the Virtual Comparator

The Average Total Tariff Points in Deciles 5, 6, 7, 8, 9 and 10 in Vale of Leven Academy are below the VC. Deciles 1, 2, 3, and 4 are above. Insight notes the results in Decile 1 as significant in the 2017 data.