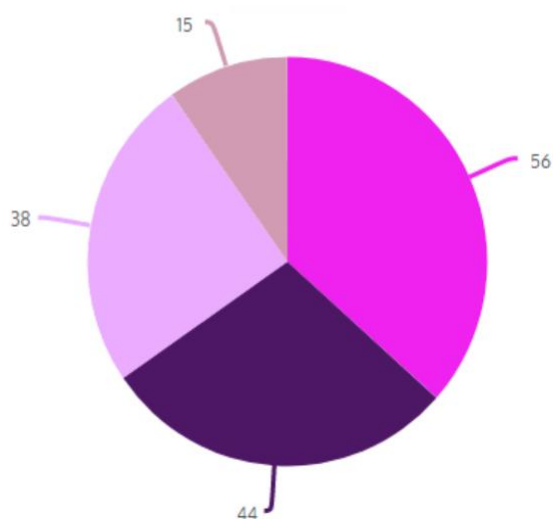


Community Budgeting

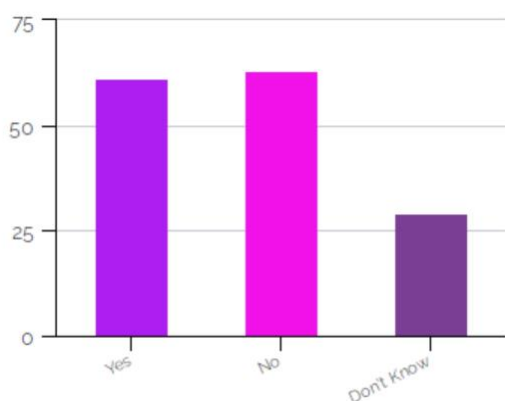


Clydebank Dumbarnton Alexandria, Renton & Balloch Old Kilpatrick



Where do you live?

Summary of where respondents live in West Dunbartonshire.



Should funding be split by population percentage?

We asked if funding should be split by population, meaning areas with a larger population would receive a greater amount of funding.



Capital / Revenue Split

Focus Group participants asked why the available funding was split into capital and revenue funds, as this caused confusion for applicants?

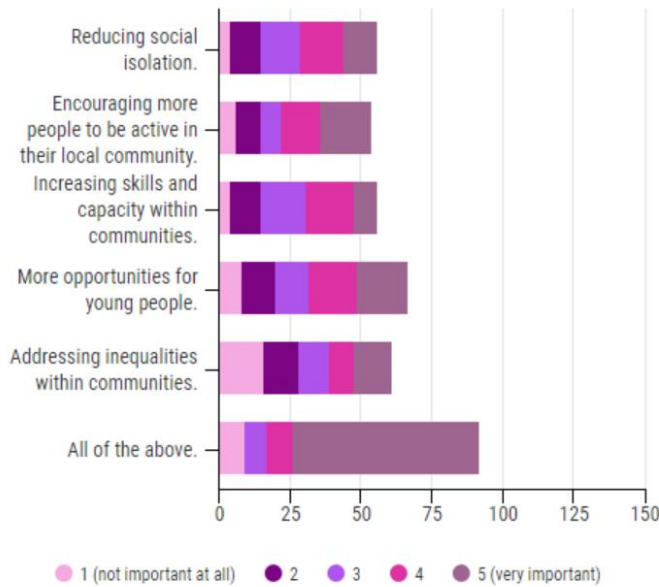
As a consequence, Community Budgeting 5 will not ask whether applicants are requesting capital or revenue funding. The available funding can be used for either.



What should the maximum application amount be?

We asked participants at focus groups what the maximum amount of funding groups could apply for should be. The majority of participants agreed that £5000 was a fair amount. Focus groups also agreed that only one application should be allowed per organisation.

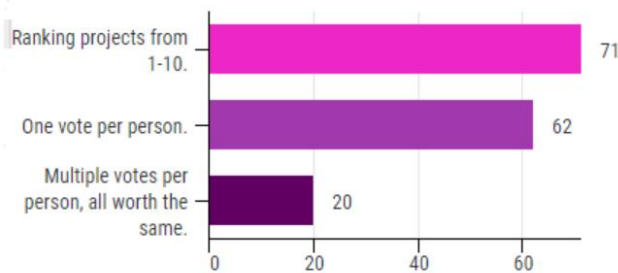
Key Priorities



Key Priorities

We asked respondents to rank key priorities that funded community groups should meet. In addition, through focus group discussion, Health and wellbeing was identified as a priority. This has been added to the list of priorities on the Community Budgeting application form.

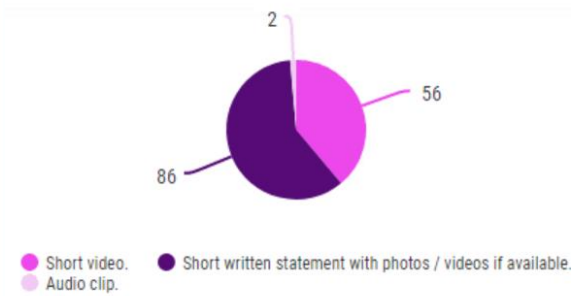
Voting Methods



What is the best method for online voting?

We asked how we could make it easy and fair to vote for groups online. The majority of respondents voted for ranking projects from 1 - 10.

Presenting Methods



What do you think would be the easiest & fairest way for groups to present online before voting opens?

The majority of respondents voted for short written statement with photos / videos if available