

West Dunbartonshire Local Development Plan

Main Issues Report

Background Report:
Open Space Analysis



MARCH 2012

Open Space Analysis

Introduction

The Council in conjunction with Greenspace Scotland undertook an analysis of the provision of open space existing in West Dunbartonshire to assist with the aim of developing open space standards for the Council area.

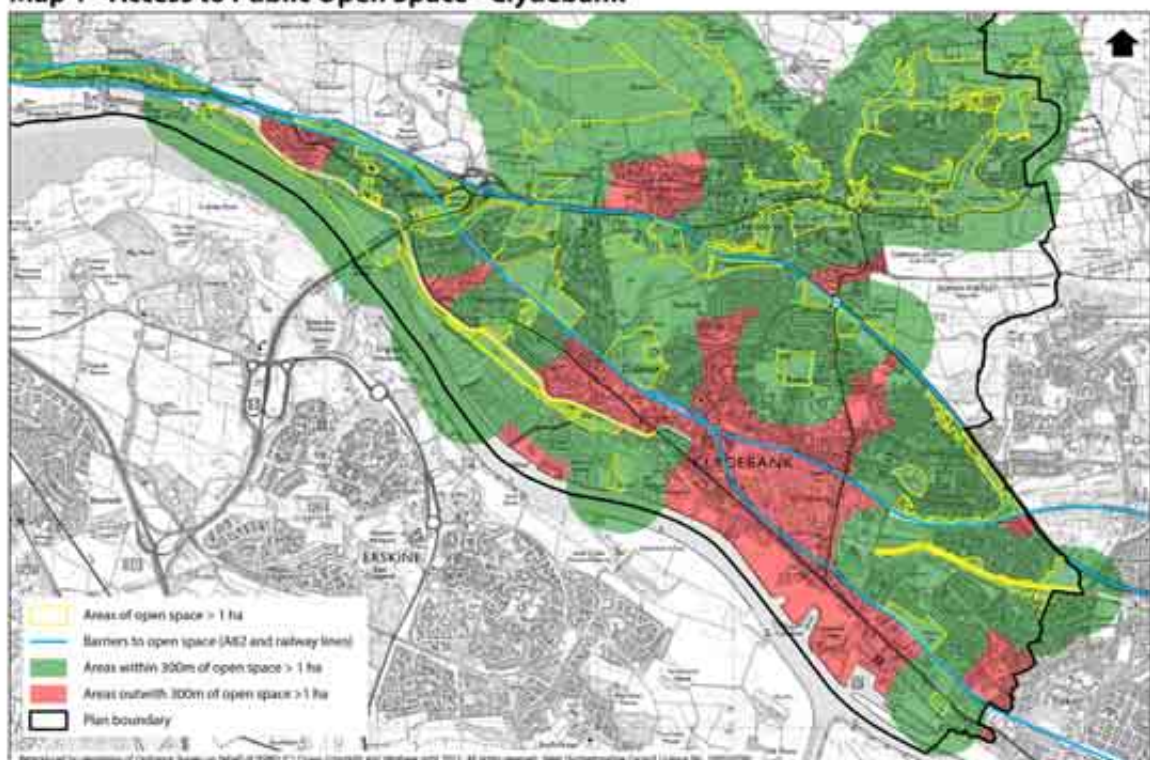
The aim is to provide standards which take into account accessibility, quantity and quality. Analysis of accessibility and quantity is set out in this report. Assessment of the quality of open spaces was undertaken as part of the Councils Open Space Strategy and Audit.

Greenspace mapping provided by AECOM and Greenspace Scotland was used to identify usable public open spaces based on the following PAN65 sub-sets - public parks (public parks and gardens), amenity greenspace (residential), play space (play space for children and teenagers, playing fields), green corridors (green access routes, riparian routes), natural/semi-natural greenspace (woodland, open semi-natural, open water), allotments & community growing spaces, burial grounds (churchyards and cemeteries) and civic space.

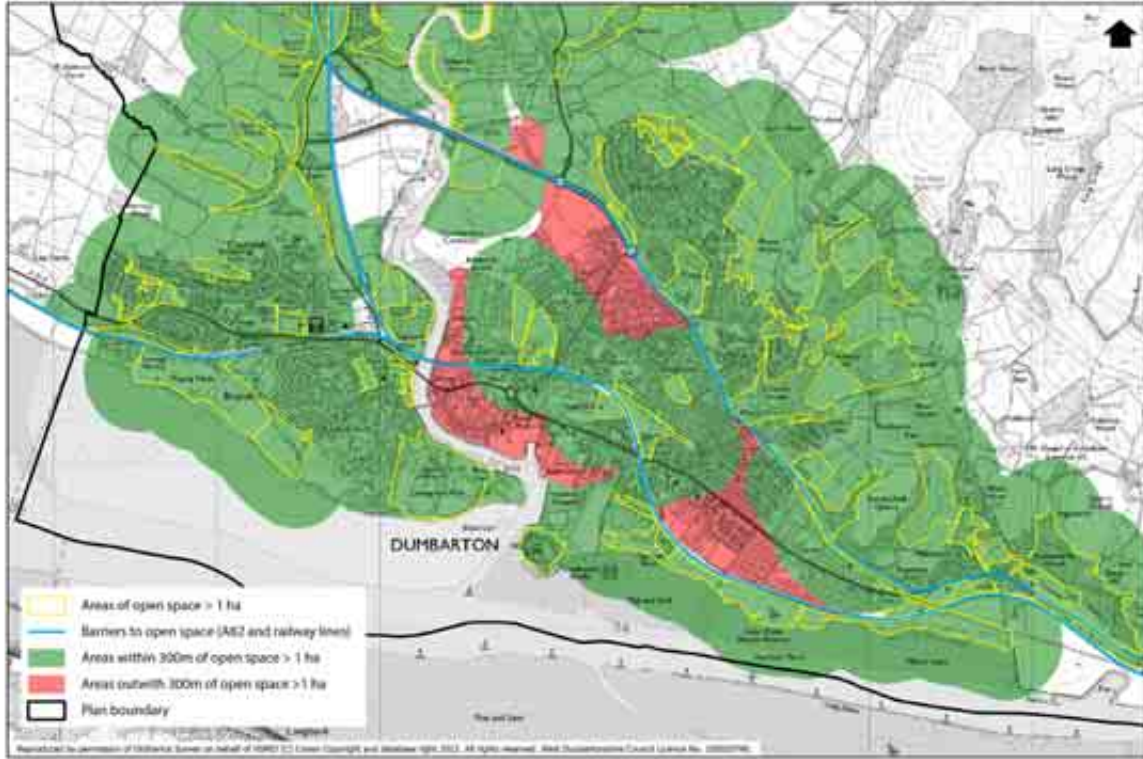
Accessibility of Open Space

With regard to accessibility of provision areas of open space greater than 1 hectare were identified and buffers were applied to show those areas within 300m of these. The one hectare threshold was chosen as it is considered to provide an area of multi-use open space and 300m as this was considered a reasonable walking distance for children. Accessibility to open space can also be affected by 'barriers' such as major transport routes and waterways. The A82, railway lines, canal/river were considered as significant barriers which may stop people from accessing an open space area. Maps 1-3 show in red those areas that lie beyond 300m of a 1 hectare useable open space also taking into account these physical barriers.

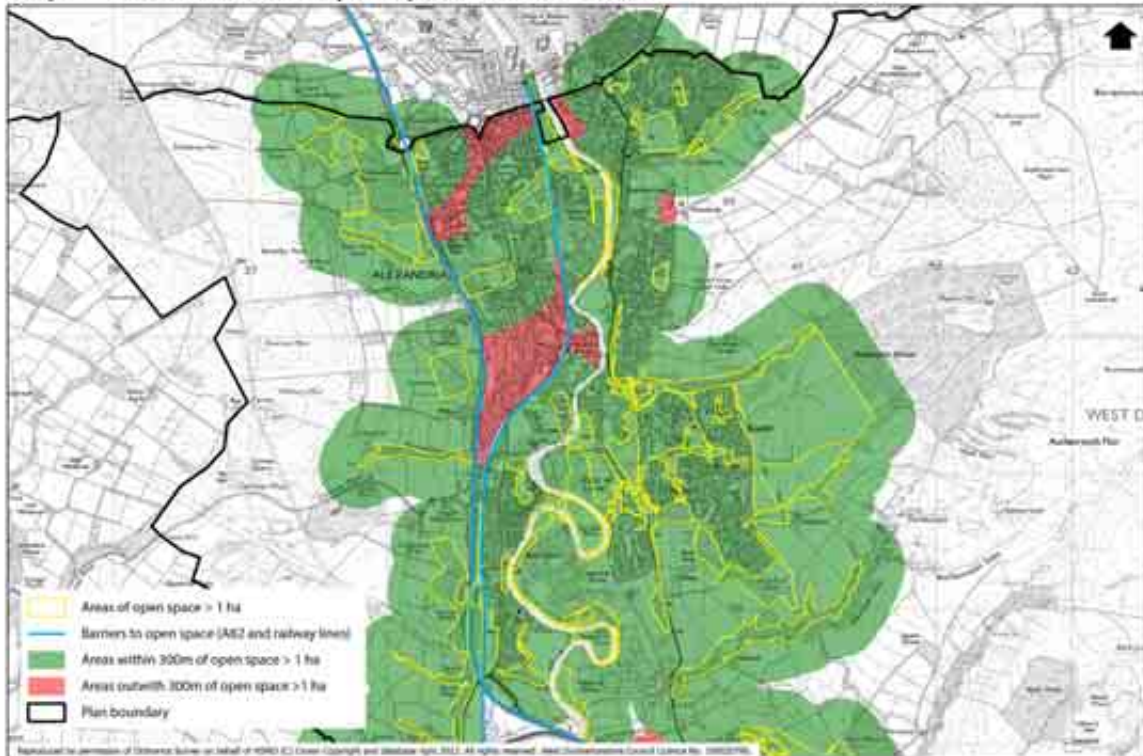
Map 1 - Access to Public Open Space - Clydebank



Map 2 - Access to Public Open Space - Dumbarton



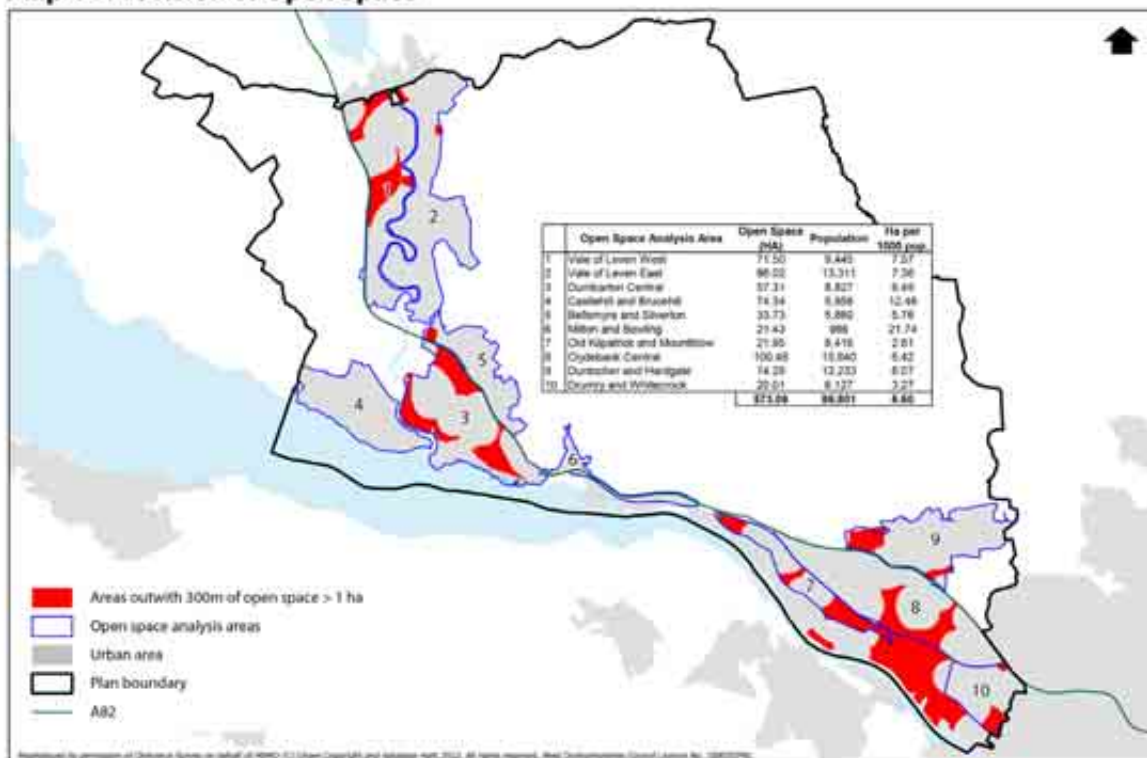
Map 3 - Access to Public Open Space - Vale of Leven



Quantity of Open Space

With regard to quantity of provision, the urban area was also broken down into smaller analysis areas based on the accessibility barriers to open space mentioned previously (major transport routes and waterways). The areas identified are shown in the table on Map 4. The provision of usable open space per hectare per 1000 residents was calculated for each of these areas. An average provision of over 6 hectares per 1000 residents was calculated for the West Dunbartonshire areas as a whole. Key areas highlighted as having open space provision less than this are Old Kilpatrick and Mountblow, and Drumry and Whitecreek. Milton and Bowling and Castlehill and Brucehill have higher than average provision of usable open space when compared to resident population.

Map 4 - Provision of Open Space



Conclusions

Average provision of open space in West Dunbartonshire is around 6 ha per 1000 residents. This would seem an appropriate level on which to base the requirement of open space through new residential development. The type of open space contribution that will be sought could be based upon the accessibility and quantity analysis, such that new open space is sought in areas of deficiency and an improvement to quality or contribution to the wider Green Network is sought in areas of sufficiency.

CONTACT DETAILS

Planning and Building Standards
Council Offices
Rosebery Place
Clydebank
G81 1TG
Telephone: 01389 737000
Email: ldp@west-dunbarton.gov.uk

OTHER FORMATS

This document can be made available on request in alternative formats such as large print, Braille, audio tape or computer disc as well as in five community languages.

本文件亦可應要求，製作成其他語文或特大字體版本，亦可製作成錄音帶。

अनुगोष पर वह दरनवतंत्र अन्य भाषाओं में, वडें अक्षरों की छपाई और सुनने वाले माधुम पर भी उपलब्ध है

ਇਹ ਦਸਤਾਵੇਜ਼ ਹਰ ਜ਼ਾਮਾਨਾ ਵਿਚ, ਵੱਡੇ ਅੱਖਰਾਂ ਵਿਚ ਅਤੇ ਆਡੀਓ ਟੇਪ 'ਤੇ ਰਿਕਾਰਡ ਹੋਇਆ ਵੀ ਮੰਗ ਕੇ ਲਿਆ ਜਾ ਸਕਦਾ ਹੈ।

درخواست پر یہ دستاویز دیگر زبانوں میں، بڑے حروف کی چھپائی اور سننے والے کے ذریعے بھی کرسکتے ہیں۔

هذه الوثيقة متاحة أيضا بلغات أخرى والاحرف الطباعية الكبيرة وبطريقة سمعية عند الطلب.

Corporate Communications
Council Offices
Garshake Road
Dumbarton
G82 3PU
Telephone: 01389 737000