

Local Development Plan 3

Evidence Gathering Consultation

Tell Us About Your Place

Summary of Responses

Introduction

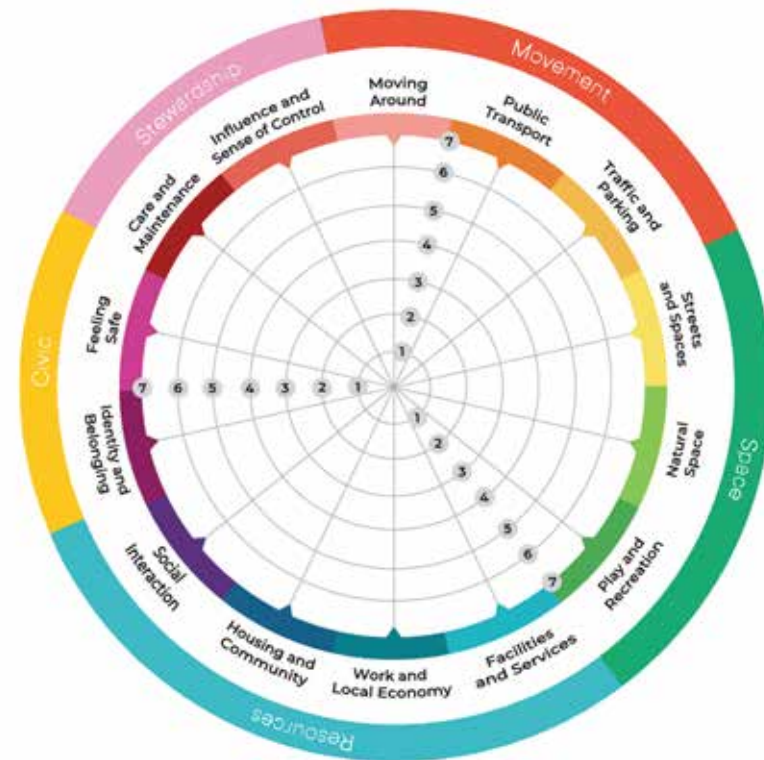
Between 8th July and 30th September The Council's Development Planning and Place Teams undertook two consultations:

- Tell Us About Your Place, a Place Standard consultation intended to collect the views of those who live in, work in, or visit West Dunbartonshire about specific places.
- Call For Evidence, was intended to collect information and aimed at stakeholders with a specific interest in the use of land and buildings, including special interest and community groups, government agencies, landowners, and developers. The results of the Call For Evidence can be found at the Emerging Local Development Plan page on the Council website.

This document summaries of responses to the Tell Us About Your Place survey. The responses for this consultation will be used to inform a variety of council strategies, including the Local Development Plan and Open Space Strategy, amongst others.

Interpreting these results

Tell us About Your Place was based on the Place Standard survey format, which asks people what is good in their area and what could be improved on for 14 different themes. The Place Standard themes are linked to themes of the Place and Wellbeing Outcomes, which provide a focus for a place-based approach to improve equality and sustainability of communities.



For each of the 14 themes respondents are asked to score how their place performs on a scale of 1 – 7; 1 being the lowest score and 7 being the highest. For each theme respondents were also asked what is good about their place now and how it could be improved.

The results have been summarised by Community Council area. Each of the Community Council Summaries includes: A map of the Community Council Area; a chart showing the scores given by respondents for each of the themes; and a summary of what respondents said is good now and what could be improved about their area.

A number of responses received were specifically for the proposed

development of a hydrogen production and storage facility at the Auchentoshan Distillery. While the purpose of this consultation was not to collect information on specific developments, a summary of these comments is also presented here. These comments will be helpful in considering how hydrogen facilities should be treated within the Local Development Plan.

The diagram below shows how the score charts should be read.



The dark blue line shows the average score for the community council area.

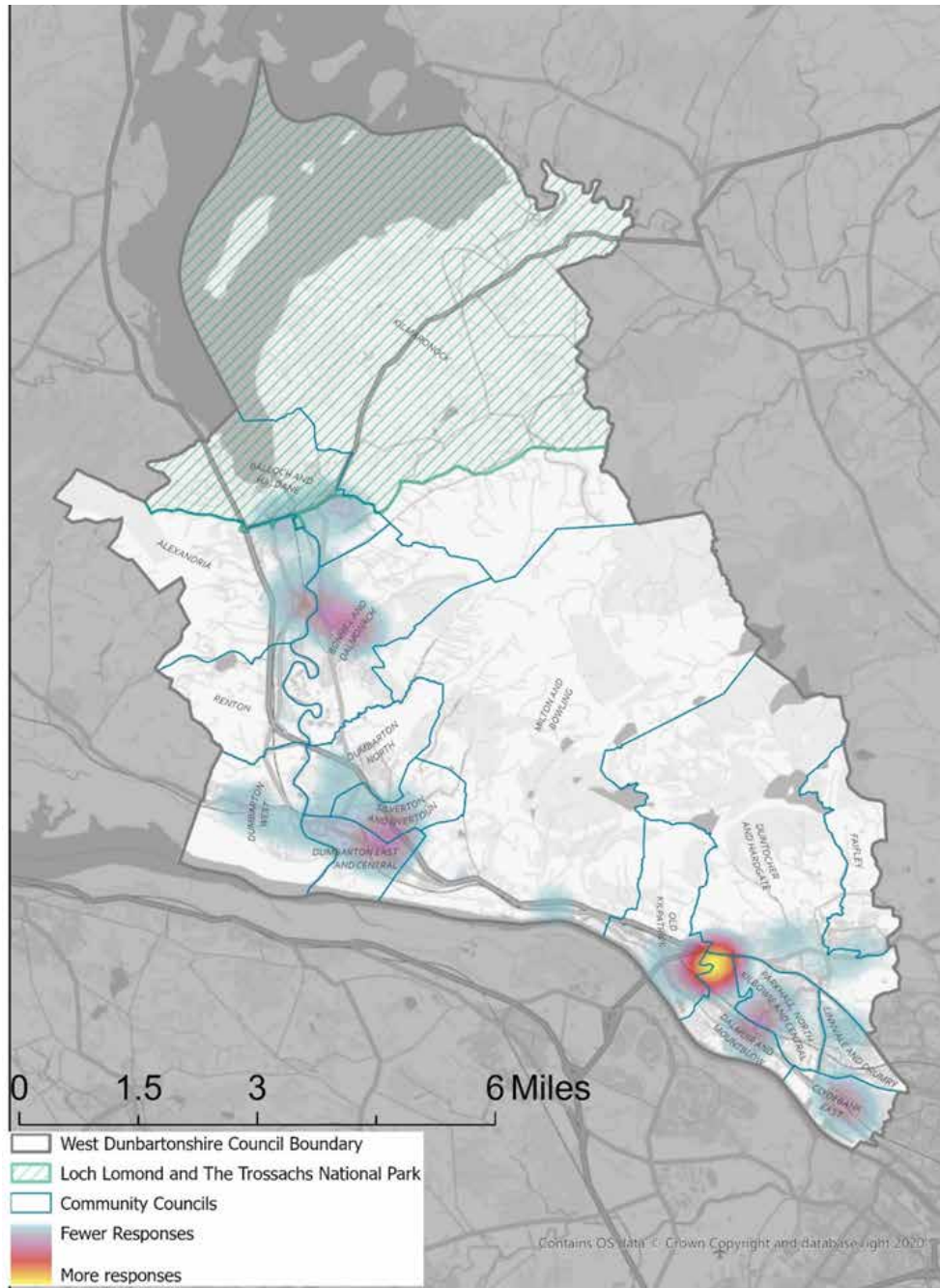
The green line shows the average score for the West Dunbartonshire as a whole

The blue shaded area presents the range of scores given by respondents. The wider the area, the wider the range of opinion

Where the dark blue line is outside of the green line this means the area is scoring better than the West Dunbartonshire average for that theme. Where the dark blue line is inside of the green line, the area is scoring worse than average for that theme.

Where no blue shaded area is shown, respondents all agreed or there were too few responses to show a range.

West Dunbartonshire Overview



Overall, there was 90 Responses to the Tell us About Your Place Consultation. The map in figure 2 presents where shows where the highest concentration of responses comes from. The areas of the map that are more yellow or red shows a high level of responses from that area. Areas in purple or blue show a lower level of response.

Responses were received from people in every community council area, however where there were less than 5 responses in an area, these are not shown.

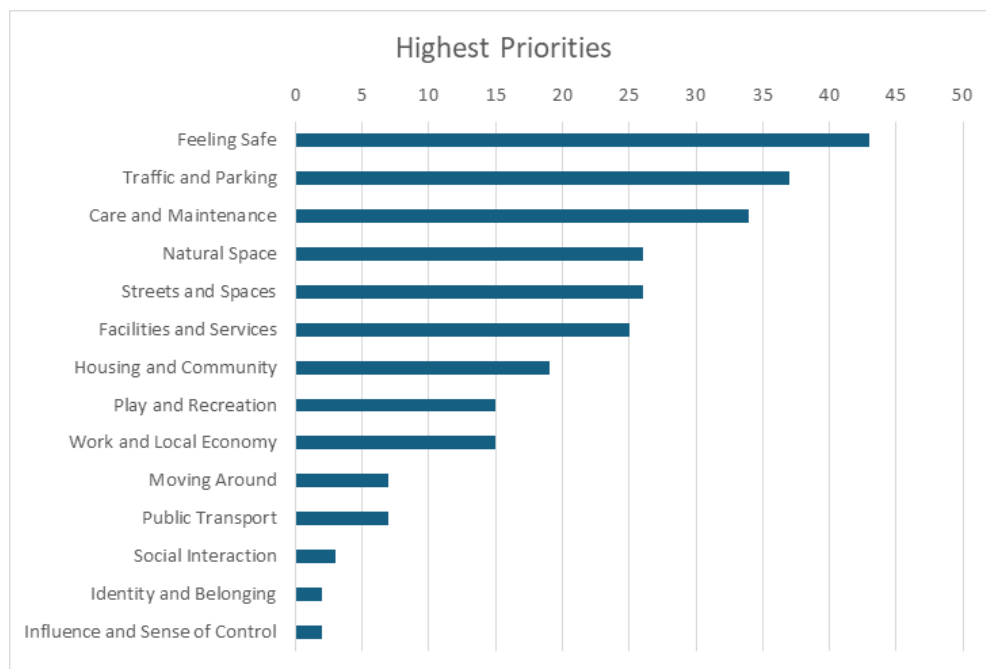
The community council area with the highest level of responses was from the Dalmuir and Mountblow. Many of these comments are centred around Auchentoshan Distillery, where some residents are concerned about the development of a proposed hydrogen production facility. Other hotspots for responses were Dumbarton, and Bonhill and Dalmonach.

The chart below (Figure 3) shows the average scores presented given for each theme for the whole of West Dunbartonshire.



On average most themes score 4. Public Transport and Natural Space were the highest scoring themes. The lowest scoring themes were Play and recreation and care and maintenance. More detailed breakdowns are provided for each community council areas.

Respondents were also asked to select the 3 themes they thought were most important. These are presented in the chart in figure 4.



The most selected priorities were Feeling Safe, Traffic and parking, and care and Maintenance.

Feeling Safe

Respondents often noted that they generally felt safe in their local communities, though a few highlighted that they didn't, particularly at night. Antisocial behaviour was mentioned frequently in responses. The most common suggestions for making this better was more policing and improved street lighting. Safety concerns were a key issue from those responding in relation to the proposed hydrogen facility at Auchentoshan.

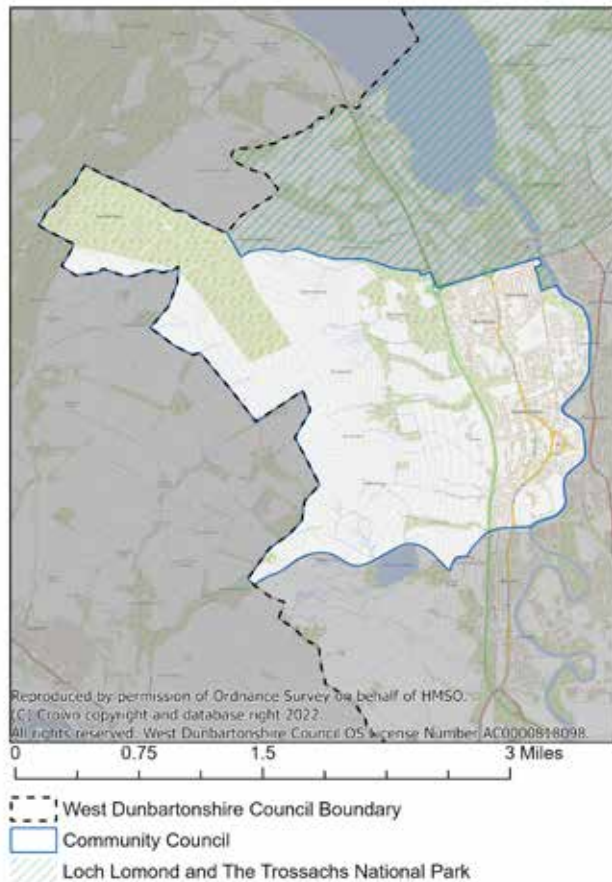
Traffic and parking

Views on whether there was a sufficient level of parking throughout the area was varied, however pavement parking, illegal parking, or unsafe parking were commonly highlighted. Reducing the volume of traffic and traffic speed were commonly suggested improvements.

Care and Maintenance

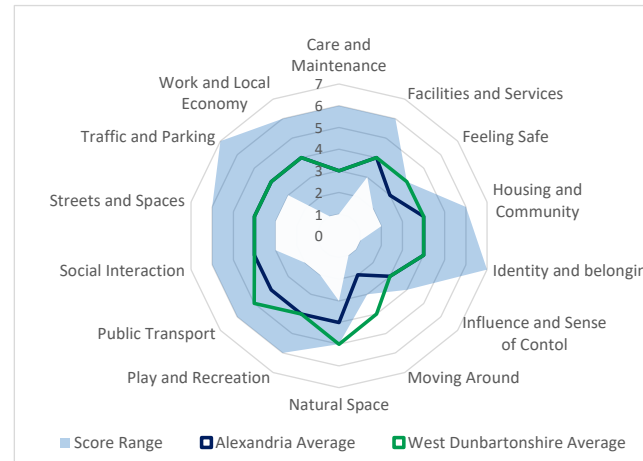
Waste collection and recycling facilities were generally viewed positively. The ease of reporting issues was also highlighted. Frequently raised maintenance issues include the condition of roads and pavements, drainage, grass cutting, weeding and maintenance of green space.

Alexandria



Responses

6 individuals



Moving Around

What is good now: Cycle routes.

How could it be better: Pavements are in particularly poor condition. Better maintenance is needed in general for pavements roads and cycle paths. Congestion is an issue.

Public Transport

What is good now: Availability of transport options

How could it be better: Improve reliability, cleanliness and safety of public transport. Antisocial behaviour on public transport is an issue.



Traffic and Parking

What is good now: Mixed views on adequacy of parking. Some view it as adequate. Some say there is adequate parking but it is poorly used.

How could it be better: Parking on main roads can be an issue. Issues with parking on double yellow lines, corners and crossings. Parking wardens could address these issues. Traffic accessing the National Park is bad during good weather.

Streets and Spaces

What is good now: Parks, library and leisure centre. Local heritage.

How could it be better: Improve payments and fix potholes Improved maintenance of streets and buildings. Improve grass cutting.

Natural Spaces

What is good now: Local parks are well kept and attractive. Easy access to Loch Lomond.

How could it be better: More grass cutting and pruning of trees and hedges. Litter and fly tipping is an issue, which could be addressed by more bins and organised clean ups by the community. Promote how to look after the countryside and how owners should control dogs.

Play and Recreation

What is good now: Good parks, play spaces, leisure centres, and open spaces.

How could it be better: Investment needed in leisure centre and parks. Improved public transport access to leisure facilities. Improved safety and policing of natural spaces and parks. Toilets/cafes in parks.

Facilities and Services

What is good now: Views were mixed on facilities and access however schools, health centres, leisure facilities and community facilities were generally good positive. There is some dissatisfaction with reduction public services.

How could it be better: Better access to medical services including doctors, dentists, pharmacies and addiction support. More paper information about facilities and services. More activities for young people.

Work and Local Economy

What is good now: Good places to eat and food shops. Good higher education and apprenticeships opportunities. Some large employers nearby.

How could it be better: Improve local shopping. Encourage investment and larger employers to the area. Use Lomond Galleries as a base for tourism and hospitality.

Housing and Community

What is good now: Mix of homes. New homes being built. Good Neighbours.

How could it be better: Improve condition of housing stock. More affordable family housing. More houses rather than flats. Shared energy heating schemes. More frequent bin collection.

Social Interaction

What is good now: Clubs and tenants associations.

How could it be better: Better promotion of social activities such a posters or community magazine. Community use of leisure centre. More policing.

Identity and Belonging

What is good now: Good neighbours and sense of community. Volunteering opportunities and events.

How could it be better: Address antisocial behaviour. More policing. Promote local high streets and facilities. Less tourism.

Feeling Safe

What is good now: Good neighbours, but multiple respondents highlighted that they feel generally unsafe.

How could it be better: Address antisocial behaviour and more policing. Improved street lighting.

Care and Maintenance

What is good now: The local recycling centre. Maintenance of utilities.

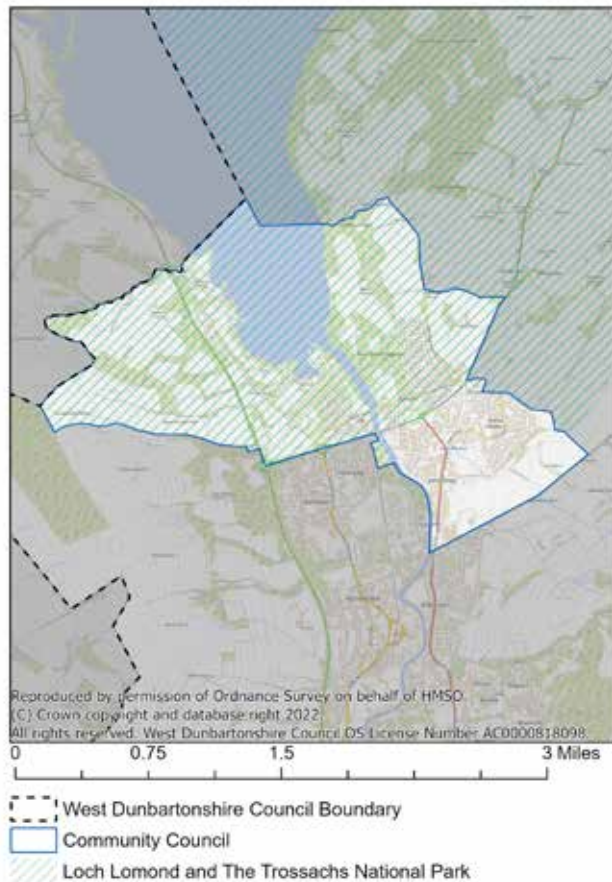
How could it be better: Pavement and pothole repairs. Garden maintenance. Reduce fly tipping and littering. Be more responsive to complaints and repair requests.

Influence and Sense of Control

What is good now: Community Councils and community groups

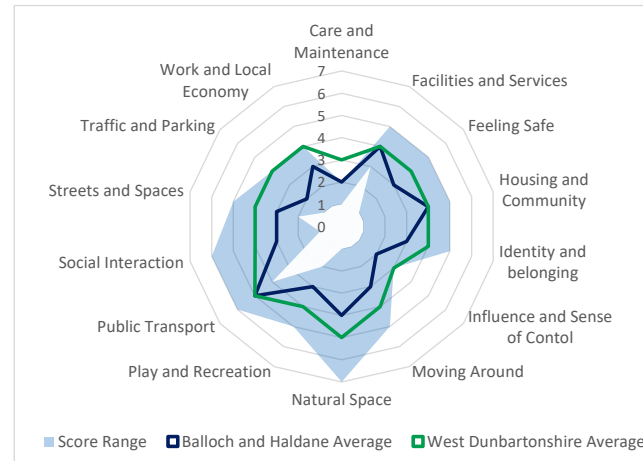
How could it be improved: Listen to people more. Visible action on complaints. More litter picking.

Balloch and Haldane



Responses

5 individuals



Moving Around

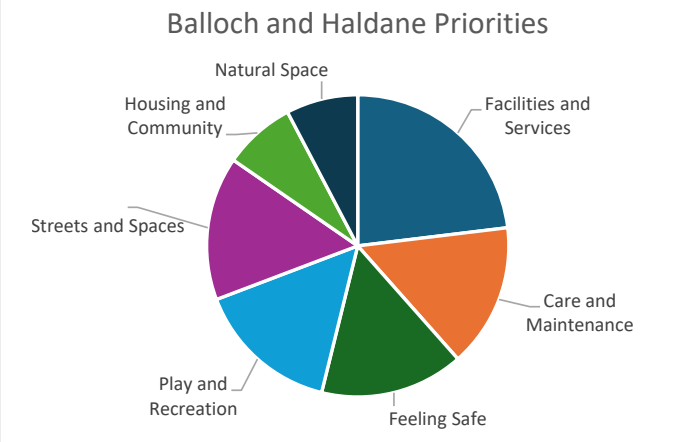
What is good now: Good paths and availability of bus stops

How could it be better: Pavement condition could be improved. Pavements not disability friendly as they are uneven and have bushes, trees, and parked cars blocking the path. More low kerbs for wheelchairs Potholes need fixed.

Public Transport

What is good now: Availability and regularity of bus and train services.

How could it be better: More reliable and less expensive. Electronic screens and seating in bus shelters. Reducing antisocial behaviour on public transport.



Traffic and Parking

What is good now: Traffic calming

How could it be better: More disabled parking and low kerbs. Reduce parking on double yellow and pavements. Cut hedgerows obstructing visibility.

Streets and Spaces

What is good now: Regeneration is taking place. Upgrades to social housing.

How could it be better: Better maintenance of roads, paths, gardens and public spaces. More regeneration of derelict buildings needed.

Natural Spaces

What is good now: Good open spaces for walking and play. Particularly Balloch Country Park. Some wildflower areas viewed positively.

How could it be better: Address dog fouling. Biodiversity areas can look untidy. Better seating. Don't build on open space.

Play and Recreation

What is good now: Inler park and green spaces within Haldane.

How could it be better: Improvements and maintenance of play equipment. More provision for older children. Keep libraries open. Address antisocial behaviour.

Facilities and Services

What is good now: Local shops and bus services. Most did not provide a response to this question.

How could it be better: Balloch Library was preferred in its previous location. Area needs a community hub. Make use of empty shops for local services and improve frontages.

Work and Local Economy

What is good now: Most did not respond to this question

How could it be better: More diversity in economy: Balloch limited to hospitality. Too many part time or low hours contracts. More training opportunities for young people.

Housing and Community

What is good now: Regeneration taking place.

How could it be better: Improve housing conditions. More Social housing. Address antisocial behaviour.

Social Interaction

What is good now: There were no responses to this question.

How could it be better: A hub for the community. Make halls and facilities more affordable/accessible. More activities promotion. Better offline promotion of activities.

Identity and Belonging

What is good now: Most did not respond to this question. Friendly place

How could it be better: Most did not respond to this question. Provide more housing that enables local people to stay in the area.

Feeling Safe

What is good now: there were no responses to this question.

How could it be better: Address antisocial behaviour, particularly in the summer when there is more. More police presence. Address littering.

Care and Maintenance

What is good now: there were no responses to this question.

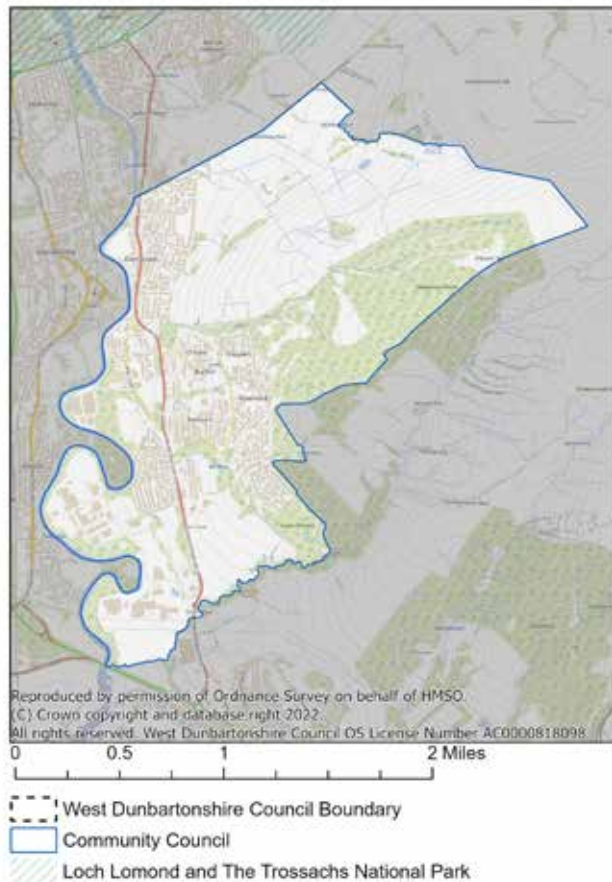
How could it be better: Be more responsive to citizens Lots of litter and dog fouling on pavements. Improve pavement conditions, fill potholes, empty bins before overflowing.

Influence and Sense of Control

What is good now: There were no responses to this question.

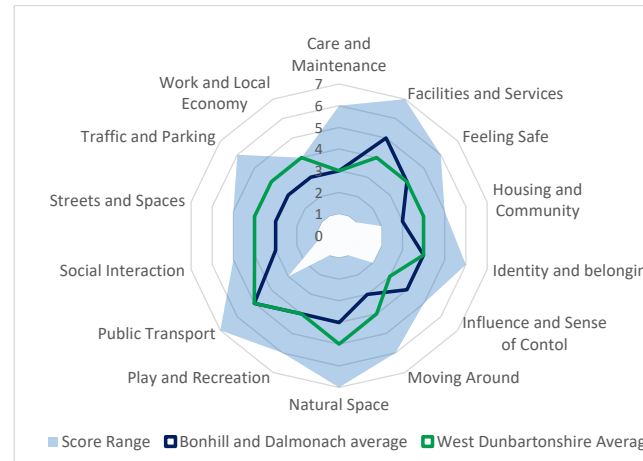
How could it be better: Most did not respond to this question. Be more responsive to citizens. More councillor visibility.

Bonhill and Dalmonach



Responses

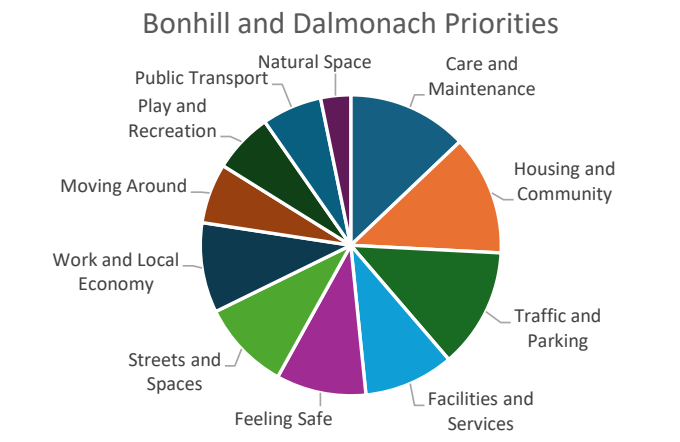
11 individuals



Moving Around

What is good now: Most said nothing was good. Some highlighted good provision of paths and pavements and availability of public transport.

How could it be better: Better pavement, road and drain maintenance and cleaning. Address dog fouling. Heavy traffic and priority to the car makes it hard to move around as a pedestrian. Better cycle path provision. Speeding enforcement. Address pavement parking. Roundabout road layout around Alexandria train station needs to be more pedestrian friendly. More consultation around path closures.



Public Transport

What is good now: Regular bus and train services.

How could it be better: More busses on Sundays and bank holidays. More affordable. Services that access locations away from main roads. Better connections to services, such as hospitals. Train stations lack shelter. Could put transport hub at Alexandria Train Station.

Traffic and Parking

What is good now: Many did not respond to this question or stated there was nothing good. Some stated there was sufficient quantity of parking.

How could it be better: Address parking on double yellow lines, at junctions, and at bus stops. Improve car park maintenance and attractiveness. Reduce dominance of traffic. A transport hub. More disabled spaces.

Streets and Spaces

What is good now: Some good examples of local architecture. Some regeneration taking place. New community centre. Parks.

How could it be better: Better street maintenance, including pavement surfaces, drainage, litter and signage. Improved signage. Improving building frontages.

Natural Spaces

What is good now: Number of accessible parks. Biodiversity. Access to natural habitat. Walks in natural spaces.

How could it be better: More maintenance of green spaces, including grass and hedge cutting. Address dog fouling. Biodiversity enhancement needs to be more than not cutting grass. Plant flowers and fruit trees. Protect green space from development. path closures have reduced access.

Play and Recreation

What is good now: Community centre. Swimming pool. Play parks

How could it be better: More seating. More maintenance and grass cutting. More to do for young people/older children.

Facilities and Services

What is good now: Health centre. Schools. Access to shops. Pedestrian and vehicle access to facilities.

How could it be better: Health centre location not very accessible. More places for older people to socialise. Make better use of schools as community resource all year round. More shops.

Work and Local Economy

What is good now: There are some employment and volunteering opportunities.

How could it be better: More diversity of shops and businesses. Promotion of local opportunities and training. Improved transport for job seekers.

Housing and Community

What is good now: Mixed housing. Housing well maintained. New homes being built. Good neighbours.

How could it be better: Modernise existing stock, including for energy efficiency. More affordable family housing. More bungalows.

Social Interaction

What is good now: Church activities and clubs.

How could it be better: Better promotion of existing events. More support for existing social spaces. More places to socialise. Public buildings should be available for wider public use.

Identity and Belonging

What is good now: Most did not respond to this question. Friendly people.

How could it be better: Improve maintenance. Promote community involvement. Address drug issues. Less large developments.

Feeling Safe

What is good now: Most did not respond to this question. Street lighting. Antisocial behaviour seems lower than in the past.

How could it be better: Address antisocial behaviour and crime

Care and Maintenance

What is good now: Easy to report issues.

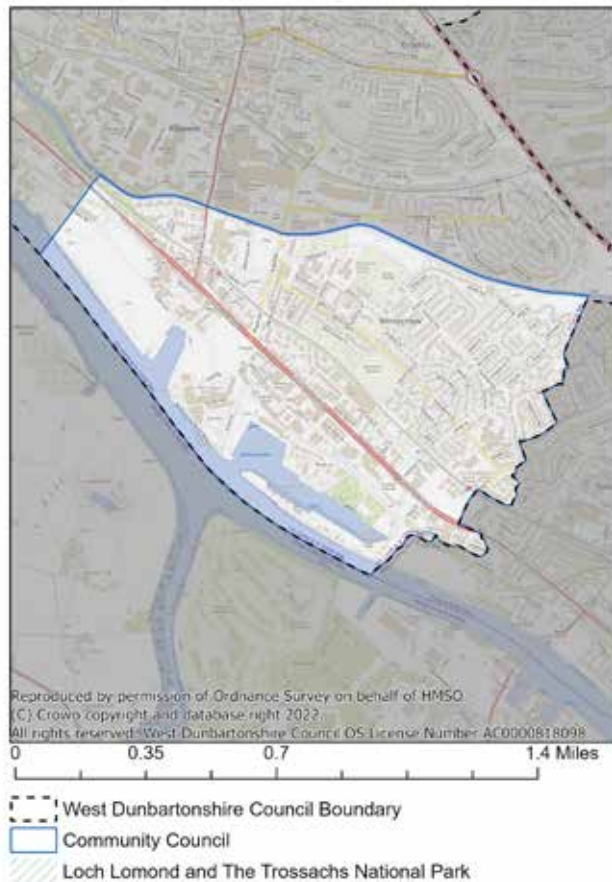
How could it be better: Cut long grass. Address dog fouling. Council could be more responsive to reported issues. Council needs adequate funding. More maintenance in general needed for roads, paths and public buildings. Pickup litter.

Influence and Sense of Control

What is good now: Lots of routes for consultations, complaints and challenge decisions.

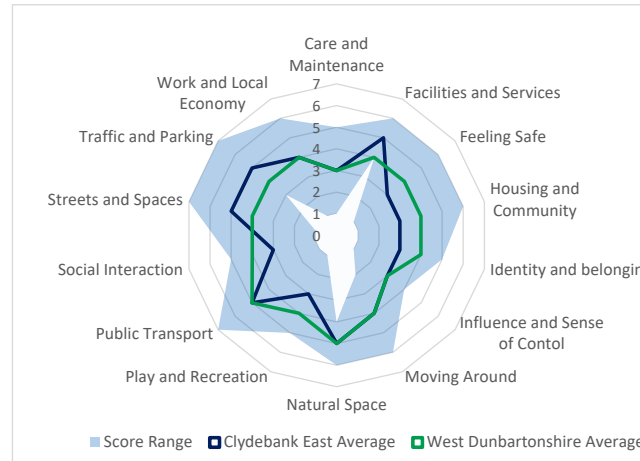
How could it be better: Listen and be more responsive to citizens. More opportunities for people to contribute. Make it easier to speak to officers and councillors. More support and power for Community Councils.

Clydebank East



Responses

6 individuals



Moving Around

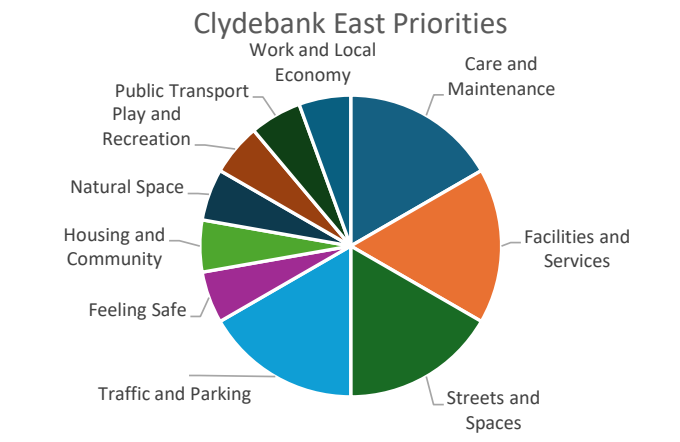
What is good now: Condition of paths and roads on some estates. Canal cycle path. Access to bus and rail services.

How could it be better: More cycle routes separated from traffic. Better street cleaning to remove litter, moss and weeds. Pavement parking needs addressed, particularly on lower kerbs. Some pavements broken and uneven. Tree stumps causing obstructions.

Public Transport

What is good now: Accessible bus and rail services. Choice of services.

How could it be better: Better links to hospital. Later bus services. Train station improvements.



Traffic and Parking

What is good now: Sufficient parking. Electric vehicles reducing pollution.

How could it be better: Reduce speeds. Reduce pavement parking. Traffic calming on East Barns Street causes conflict.

Streets and Spaces

What is good now: Parks. Libraries. Tree planting in Whitecrook.

How could it be better: Improved park maintenance. Better maintenance of building frontages. Reduced fly tipping and littering.

Natural Spaces

What is good now: Good access to green spaces. Access to play and sports places. Cycle routes.

How could it be better: Address Antisocial behaviour. Better management of trees near paths and cycle routes. Address littering and fly tipping. Use vacant land for allotments. More facilities for families. Plant flowers in public spaces.

Play and Recreation

What is good now: Play spaces in local parks.

How could it be better: More provision for older children. Improve cleaning and maintenance of parks and play spaces.

Facilities and Services

What is good now: Health centre. Library. Shopping centre. Bowling green. Schools.

How could it be better: Improve accessibility to health facilities. Better disability access to facilities and services. Regenerate shopping centre.

Work and Local Economy

What is good now: Responses were mostly negative regarding work, the economy and job availability.

How could it be better: Better access to jobs and training. More job opportunities for young people. Regenerate and invest in shopping centre.

Housing and Community

What is good now: Mix of housing. New homes being built. Housing with suitable wheelchair access.

How could it be better: Better maintenance of homes. More support for homeless. Improve garden maintenance scheme. Upgrade energy efficiency of housing stock. Address antisocial behaviour.

Social Interaction

What is good now: Cafes, pubs, and parks provide places to meet people.

How could it be better: Keep bowling clubs open. Keep day centres open. More free places for people to meet.

Identity and Belonging

What is good now: People are friendly.

How could it be better: More investment in local area.

Feeling Safe

What is good now: Mixed responses as to whether people feel safe.

How could it be better: More policing. More support and employment for young people. Better facilities for families and children. Improvements/repairs to security of housing stock.

Care and Maintenance

What is good now: Issues easy to report. Streets clean. Bins emptied regularly.

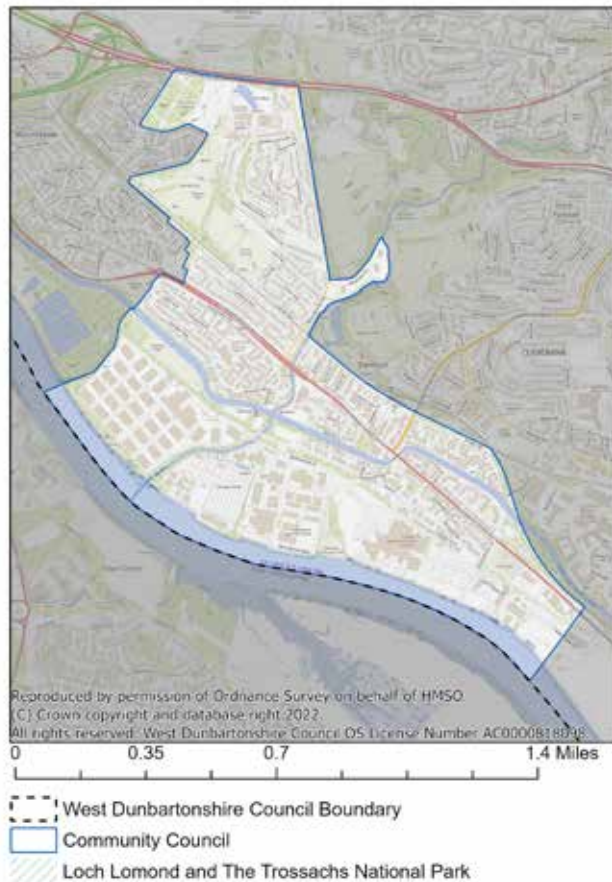
How could it be better: More frequent grass and tree cutting. Improve drains and maintain more frequently. More road sweeping. Address litter and fly tipping. Improve quality of building maintenance

Influence and Sense of Control

What is good now: Comments were unsure, or noted that nothing was good.

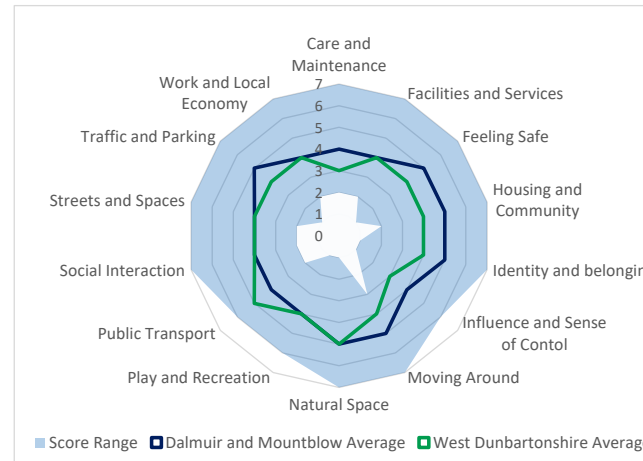
How could it be better: More consultation with residents and tenants. Listen to citizens more

Dalmuir and Mountblow



Responses

16 individuals



Moving Around

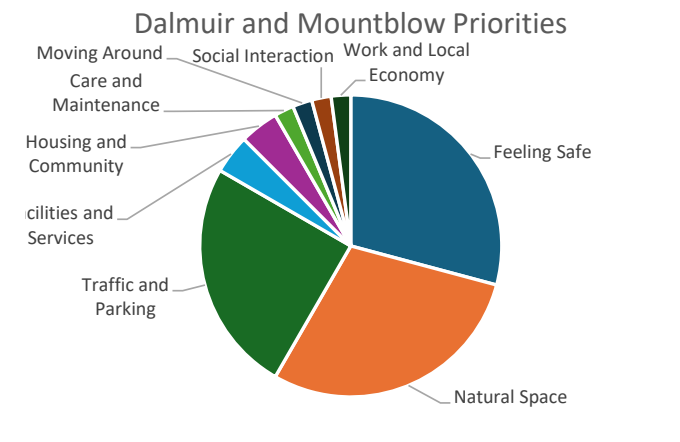
What is good now: Paths, cycle paths and pavements.

How could it be better: Better maintenance of paths. Make surfaces smoother for those with mobility issues. Reduce on street car parking. Improve the tunnel towards Dalmuir park. Address antisocial behaviour along canal.

Public Transport

What is good now: Trains and buses are easy to access.

How could it be better: More regular bus and train services. More bus routes. Upgrade train station facilities. More planting at train station. Address antisocial behaviour on public transport.



Traffic and Parking

What is good now: No comments (see Auchentoshan Distillery for comments related to area hydrogen proposal).

How could it be better: Reduce on street parking. Reduce parking on corners. Repair and encourage use of lock ups, or demolish and turn into parking areas. Address use of quad and scrambler bikes and related safety issues. Better road markings where Auld Street meets Beardmore Street.

Streets and Spaces

What is good now: Old Dalnottar Cemetery is a peaceful place. Attractive green and natural spaces. Local parks. Canal towpath.

How could it be better: Concern that development is leading to loss of natural and green spaces. More cutting of grass and verges. Parts of the area feel run down

Natural Spaces

What is good now: Current greenspace and habitat. Natural beauty and tranquillity of the area.

How could it be better: Improve wildlife corridor towards olden Jubilee. Improve canal and former railway lines as wildlife corridors. More wild open spaces. Protect open, green, natural places and trees from development. Extend wildlife corridors.

Play and Recreation

What is good now: Play areas available for children. Availability of open spaces. Canal towpath.

How could it be better: More toilets in the park. More places such as youth clubs needed for teenagers and older children. Protect open space from development. Address antisocial behaviour. Some areas need more play parks.

Facilities and Services

What is good now: Local schools, with Additional Learning Needs schools highlighted. Playparks. Shops.

How could it be better: More public toilets. Improve Dalmuir community centre. Provision of a library and bank. More robust complaints procedure at council.

Work and Local Economy

What is good now: Auchentoshan Distillery provides local employment.

How could it be better: More job opportunities, particularly for young people. Some expressed there should be less industrial development.

Housing and Community

What is good now: Good mix of housing. New housing being built. Green spaces. Community spirit.

How could it be better: Improve quality of new build development in particular - avoid use of white near distillery, consider overly bright light and light pollution and reduce loss of trees. Concern about the loss of open space caused by new development.

Social Interaction

What is good now: Napier Hall. Canal Tow Path. Local Facebook group

How could it be better: Create a better sense of community. Improved local facilities and services which help people gather such as local library, banks and open spaces.

Identity and Belonging

What is good now: People are friendly.

How could it be better: Address antisocial behaviour. Celebrate the heritage.

Feeling Safe

What is good now: Responses about safety were mixed.

How could it be better: More police presence. Address drug issues. Address antisocial behaviour.

Care and Maintenance

What is good now: Private houses well maintained. local people do litter picking.

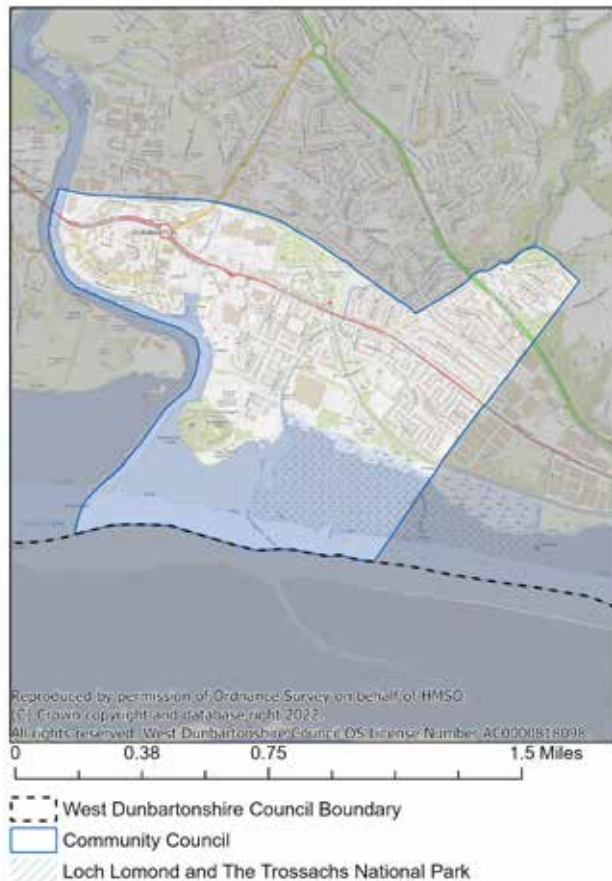
How could it be better: More grass and verge cutting, particularly on canal and industrial estate. Address litter and fly tipping. More dog waste bins. More hanging flower baskets. Better maintenance of high rise flats and surrounding area. Fix potholes. Fix vandalism.

Influence and Sense of Control

What is good now: Nothing is good.

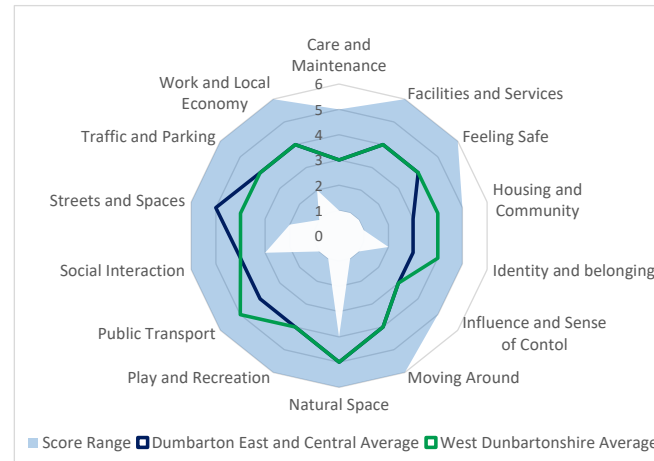
How could it be better: Much of the councils engagement is about cuts to funding. Council needs to listen more.

Dumbarton East and Central



Responses

8 individuals



Moving Around

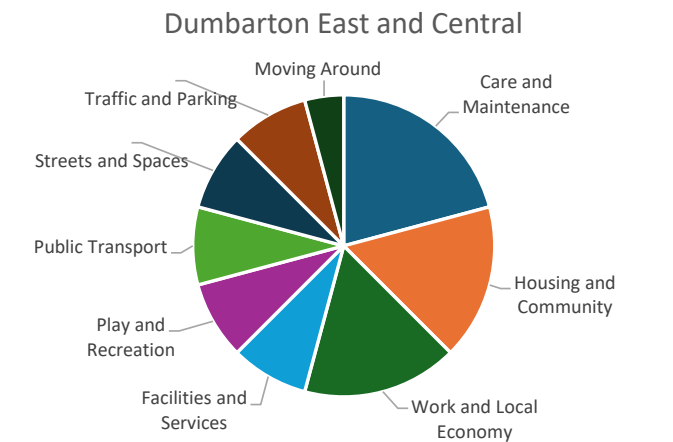
What is good now: Good availability of walking routes. Cycle path. Access to shore

How could it be better: Condition of pavements. More dog waste bins. Address litter. Address pavement parking. Better lighting. Complete waterfront walkway. There are mixed views on the improvements to station road and links to high street. Better signage of the Glasgow to Balloch cycle route through the town.

Public Transport

What is good now: Availability of bus and train services

How could it be better: More bus and train services at night. Improved reliability. Better links to airport. Improved cleanliness.



Traffic and Parking

What is good now: Most did not respond to this question, or stated that nothing was good.

How could it be better: More road repairs. Traffic issues cause when roads closed or flooded. Better speed enforcement. More parking. Less traffic. Less large/heavy vehicles.

Streets and Spaces

What is good now: Parks. Historic sites. Riverside. Resurfaced roads.

How could it be better: Improved signage. More greenspace. More regeneration/use of empty buildings. Improve waterfront and river.

Natural Spaces

What is good now: Levensgrove park. Riverside.

How could it be better: Finish waterfront path. Improve functionality of Levensgrove park and use for more events. More grass cutting. Improve paths for wheelchairs and prams. Improve connectivity of Levensgrove park to town. More greenery and less paving in Knoxland Square.

Play and Recreation

What is good now: Parks. Leisure Centres. Denny Tank Museum. Library. Castle.

Walking by the river or in Kilpatrick Hills. Dumbarton Football Club. Overall good access to recreational facilities.

Facilities and Services

What is good now: Health Centre. Library. Community Theatre.

How could it be better: More GP and dentist appointments. More services at Vale of Leven Hospital. Facilities need updating. A museum.

Work and Local Economy

What is good now: Lots of local services. New businesses and shops opening.

How could it be better: Regeneration of Dumbarton High Street. Less empty shops. More diverse shops. More support for local businesses and job creation. More leisure business in the town. Better use of historic assets.

Housing and Community

What is good now: New homes are being built. Social housing being built. New, energy efficient housing.

How could it be better: More affordable homes. Better quality, more spacious homes.

Social Interaction

What is good now: Clubs, events and community projects. Community Centre. Community Theatre. Parks. Pubs.

How could it be better: Council could make it easier for events to take place (e.g. affordability and licencing). More places for older children/teenagers.

Identity and Belonging

What is good now: Opportunities for community involvement. Some points of historic interest.

How could it be better: Area feels like it is in poor condition. Get more people involved in improving the area. Central online forum or communication tool.

Feeling Safe

What is good now: Overall mixed feelings on safety. There is some police presence.

How could it be better: More/better lighting. More police presence.

Care and Maintenance

What is good now: Waste collection and recycling centre. Some grass areas being left for wildlife.

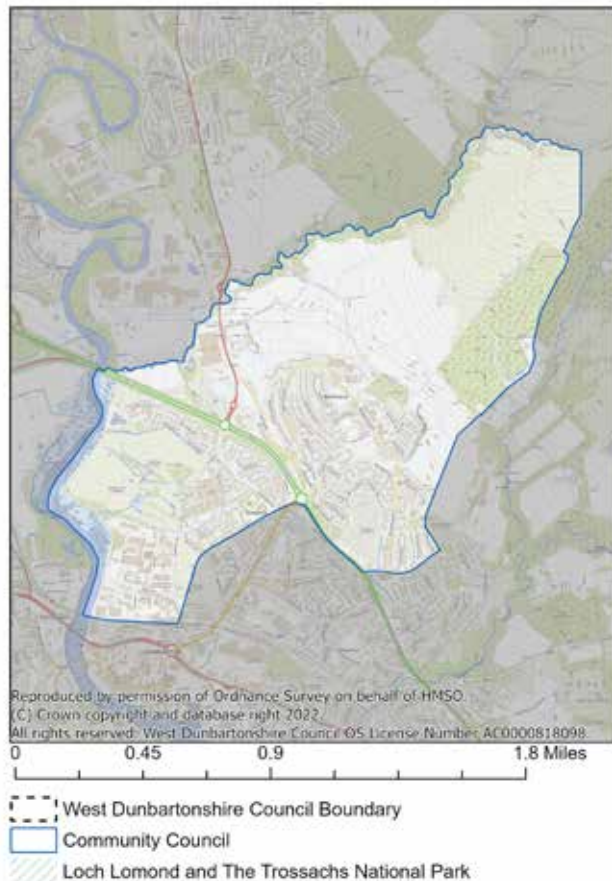
How could it be better: Improve drainage and address flooding. Better maintenance of roads and pavements. Address fly tipping and litter. Better maintenance of buildings. Make it easier to report environmental health issues on website.

Influence and Sense of Control

What is good now: Active community councils and other local groups

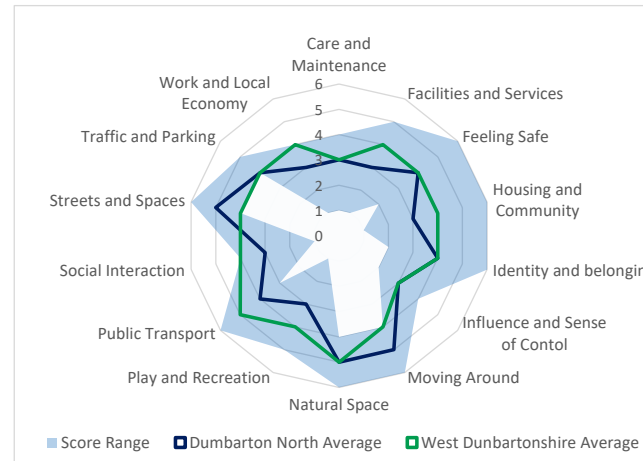
How could it be better: Improve Council communication and transparency. More power and funding for community councils and local groups.

Dumbarton North



Responses

Fewer than 5 individuals



Moving Around

What is good now: Generally easy to move around

How could it be better: Reduce illegal parking, particularly in disabled spaces. Reduce pavement parking. Improve condition of pavements

Public Transport

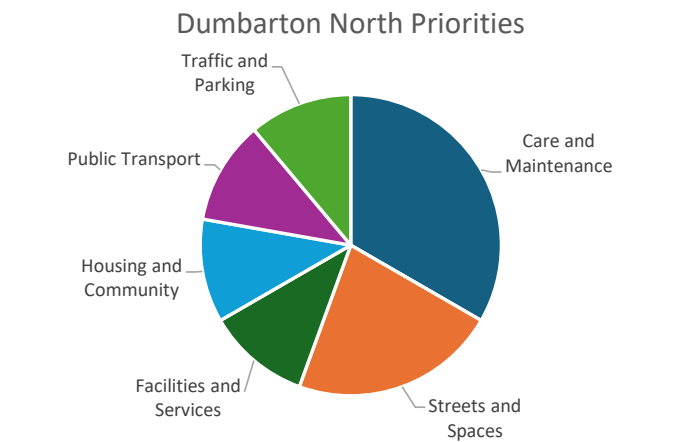
What is good now: Train service.

How could it be better: More bus stops. No buses stop near the old cemetery.

Traffic and Parking

What is good now: Nothing is good

How could it be better: Better parking enforcement to address illegal parking and pavement parking. More places to park safely



Streets and Spaces

What is good now: Green spaces. Woodland. Riverside.

How could it be better: Regenerate Dumbarton Town Centre. Improve riverside.

Natural Spaces

What is good now: Accessible greenspaces

How could it be better: Address antisocial behaviour at riverside.

Play and Recreation

What is good now: Activities in the parks.

How could it be better: Provide more activities

Facilities and Services

What is good now: Access to health facilities

How could it be better: More shops offering healthy food. Better quality shops, cafes, restaurants and bars in the town centre.

Work and Local Economy

What is good now: No comments

How could it be better: Work opportunities in Dumbarton are limited.

Housing and Community

What is good now: New, mixed housing being built.

How could it be better: Remove high rise flats. More mixed housing. More housing like that overlooking the castle.

Social Interaction

What is good now: Gym. Community halls. Community groups.

How could it be better: Better advertising of groups. More outdoor activities and groups. Better bars and restaurants.

Identity and Belonging

What is good now: Strong historical connections in town

How could it be better: Take advantage of historical connections.

Feeling Safe

What is good now: Street lighting.

How could it be better: More police presence.

Care and Maintenance

What is good now: Bins emptied regularly

How could it be better: Better maintenance of town centre.

Influence and Sense of Control

What is good now: There are opportunities for residents to get involved

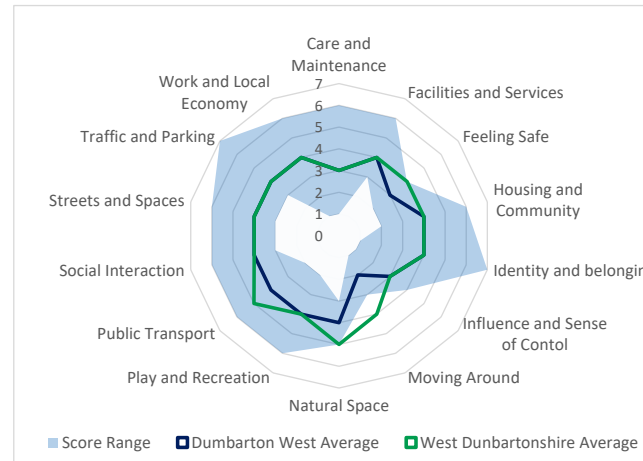
How could it be better: Involvement and consultation could be better advertised.

Dumbarton West



Responses

Fewer than 5 individuals



Moving Around

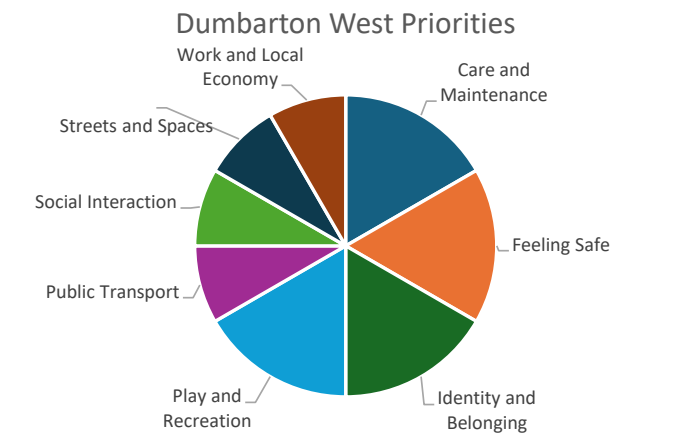
What is good now: Pavements and paths

How could it be better: Better lighting on paths between West Bridgend and Renton. More dedicated cycle routes to access town centre. More seating. Improve condition of pavements and paths,

Public Transport

What is good now: Availability of train and bus services.

How could it be better: More affordable services. Better reliability. Improve legibility of bus signs.



Traffic and Parking

What is good now: Regular pedestrian crossings on main roads.

How could it be better: Increase crossing times at pedestrian lights. More audible signals at pedestrian crossings. Reduce high street parking. Reconfigure high street and town centre parking to open up riverside for development. Provide bridge connection from town centre to Levenford Terrace.

Streets and Spaces

What is good now: Cardross Road pavements. Street trees. Handrails on steep routes and stairs.

How could it be better: More street cleaning. Reduce dog fouling. Cut back hedgerows and grass. Improve path drainage. More planting in town centre. Reconfigure town centre roads to create more public space and less traffic dominated.

Natural Spaces

What is good now: Parks. Walking routes. Wildlife

How could it be better: More street trees. Complete waterfront path. Rewilding in Kilpatrick Hills. More seating in green spaces and parks.

Play and Recreation

What is good now: Monthly advertiser shows lots of community groups and activities.

How could it be better: More provision for older children/ teenagers and adults. More library provision. More indoor places to socialise. More cycle lanes. Skatepark. Local history museum.

Facilities and Services

What is good now: Good facilities in general. Citizens Advice Bureau. Dumbarton Health Centre. Seating on high street near bus stops

How could it be better: Co-locate public services (health centre, library, community halls, etc..) in town centre. Update library. Re-open cafe in Levensgrove Park.

Work and Local Economy

What is good now: Some good places to eat nearby.

How could it be better: More training opportunities for adults. More support for small local businesses. Get more people into work. Make Dumbarton focus for tourism - more historic style architecture.

Housing and Community

What is good now: New housing of good quality.

How could it be better: Housing in Woodyard Road Area. Better maintenance of existing stock. More private housing. Demolish 1960s style architecture.

Social Interaction

What is good now: Local community advertiser food for learning about community events.

How could it be better: More creative activities for groups and adults. Online space to advertise community events.

Identity and Belonging

What is good now: No Comments

How could it be better: There is a lack of pride in the area. Some people feel isolated. Lack of people celebrating traditional holidays.

Feeling Safe

What is good now: Street lighting

How could it be better: Address antisocial behaviour. Improve safety at night.

Care and Maintenance

What is good now: Improvements being made to Council housing stock is positive.

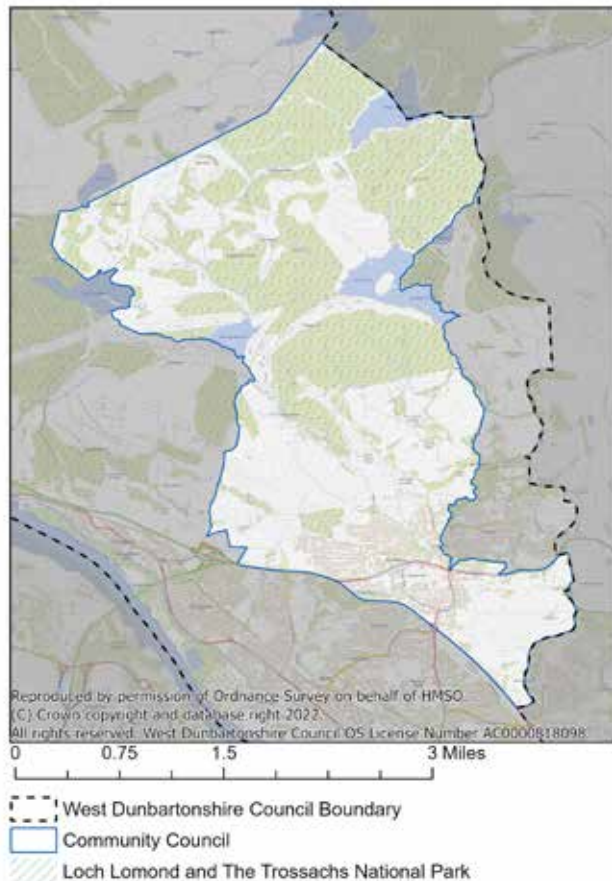
How could it be better: Better communication with tenants on works being done to social housing stock. Reverse brown bin charging. Better maintenance of town centres.

Influence and Sense of Control

What is good now: No comments.

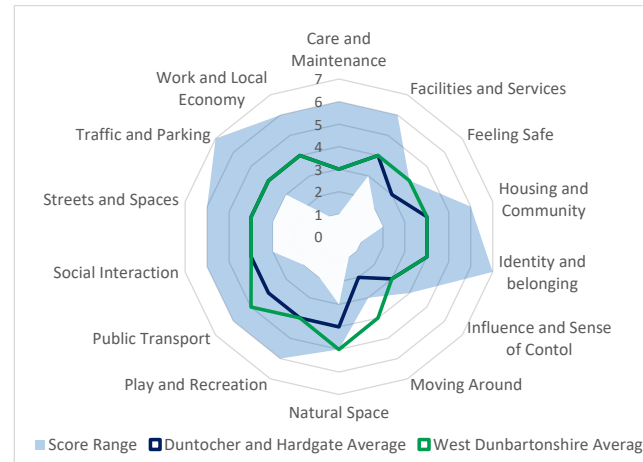
How could it be better: Council could be responsive to feedback. More focus on key health and social issues.

Duntocher and Hardgate



Responses

5 individuals



Moving Around

What is good now: Lots of greenspace.

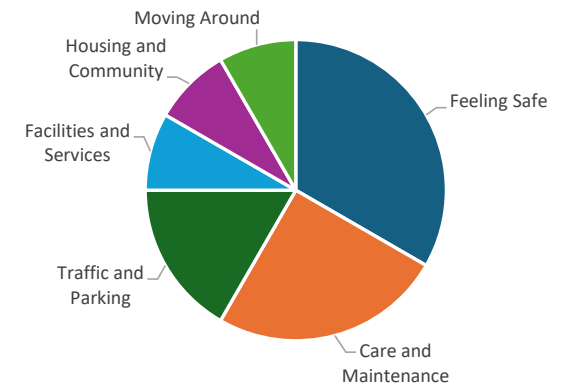
How could it be better: Remove path pavement obstructions e.g. overgrown hedges and parked cars. Better overall maintenance. Crossing at Beeches road Dumbarton Road. Improve drainage. More seating in new developments. Formalise desire paths. Bike parking at local centres. Better signage.

Public Transport

What is good now: Available bus and train services.

How could it be better: Better reliability of services. Smaller buses suitable for narrower roads. Direct bus service to Glasgow. Direct bus to Queen Elizabeth University Hospital. Kilbowie Roundabout holds up buses.

Duntocher and Hardgate Priorities



Traffic and Parking

What is good now: Suitable pedestrian crossings. Parking suitable in some areas.

How could it be better: Better parking enforcement. Address pavement parking. Parking causes congestion on streets around Carlieth Primary School. Congestion caused by on street parking (e.g. Farm Road). Congestion on Kilbowie roundabout.

Streets and Spaces

What is good now: Antonine wall information in Goldenhill Park. Street lighting

How could it be better: Tree protection. More tree planting. Better overall maintenance.

Natural Spaces

What is good now: Lots of green and open spaces.

How could it be better: Better overall maintenance. More grass cutting and weeding. Address dog fouling. Officer at the council to deal with Access issues.

Play and Recreation

What is good now: Village hall. Library. Community centres. Sports centres. Lots of outdoor spaces.

How could it be better: Better overall maintenance. Better facilities for older children and adults. More indoor spaces to socialise.

Facilities and Services

What is good now: Library. Charities and local groups do lots of good. Replaced/refurbished schools, health centres and leisure centre.

How could it be better: More available GP appointments. Better maintenance of public buildings (e.g.) Clydebank Town Hall. Cafes in local parks

Work and Local Economy

What is good now: Overall it was considered that little was good.

How could it be better: More work opportunities needed. Encourage businesses to locate and recruit in the area.

Housing and Community

What is good now: Mixed housing. Well maintained

How could it be better: More social housing. Use of brownfield land for housing. Protect greenbelt.

Social Interaction

What is good now: Community spirit. Variety of facilities for groups and activities.

How could it be better: No comments.

Identity and Belonging

What is good now: Strong sense of community, pride and belonging..

How could it be better: Better overall care and maintenance of the area.

Feeling Safe

What is good now: Mixed responses as to how safe the area is.

How could it be better: Better nighttime safety. More policing. Address antisocial behaviour (e.g. drinking in public spaces). Address people riding unsafely on electric bikes.

Care and Maintenance

What is good now: Trees and planting on A82

How could it be better: Address fly tipping. Update/maintain signage and road markings. Better maintenance of streets and pavements. More equal spending on maintenance of assets throughout the district.

Influence and Sense of Control

What is good now: Community Councils

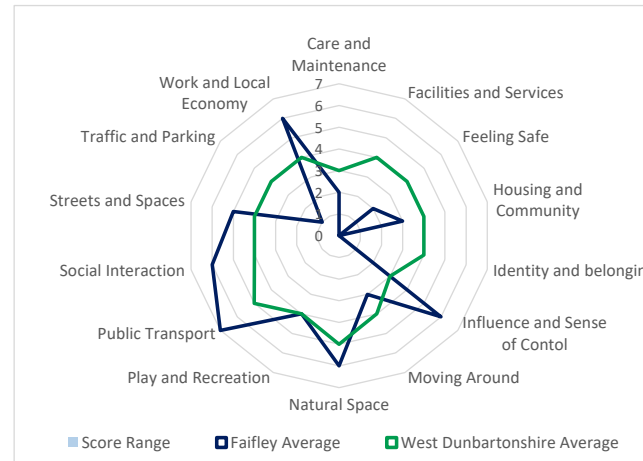
How could it be better: Council could be more responsive to complaints. More listening to community concerns

Faifley



Responses

Fewer than 5 individuals



Moving Around

What is good now: Footpaths and pavements

How could it be better: Better lighting. More maintenance of grass areas. More litter and dog waste bins. Parking impedes use of pavements. Improve condition of pavements.

Public Transport

What is good now: Bus service

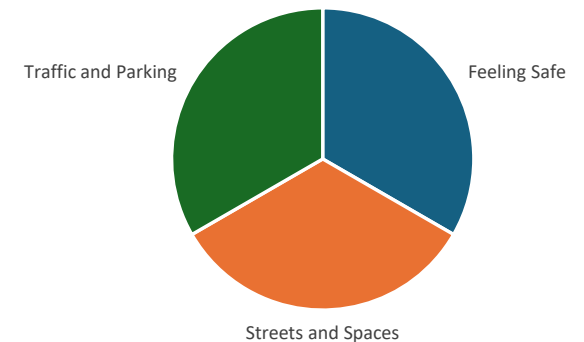
How could it be better: No comments.

Traffic and Parking

What is good now: No comments

How could it be better: Parking generally insufficient Address double parking. Address pavement parking.

Faifley Priorities



Streets and Spaces

What is good now: Faifley Knowes

How could it be better: More seating. Better lighting. Address pavement parking.

Natural Spaces

What is good now: Easy access to natural spaces

How could it be better: Better lighting. More Seating. More bins.

Play and Recreation

What is good now: No comments

How could it be better: Better maintenance of play areas in Faifley Knowes. Address litter and dog fouling.

Facilities and Services

What is good now: No comments.

How could it be better: Prioritise Flourishing
Faifley taking over building in Faifley Knowes.

Work and Local Economy

What is good now: New schools and
community centres.

How could it be better: Disappointing
Skypoint closed before opening of new
community centre.

Housing and Community

What is good now: New schools and
community facilities

How could it be better: More houses rather
than flats. Improved maintenance of housing
stock.

Social Interaction

What is good now: Social activities.

How could it be better: More outdoor seating.
Community Café.

Identity and Belonging

What is good now: Good Neighbours

How could it be better: More community
events.

Feeling Safe

What is good now: Feels safe during the day

How could it be better: Improve safety at
night. Address antisocial behaviour. More
policing.

Care and Maintenance

What is good now: No response

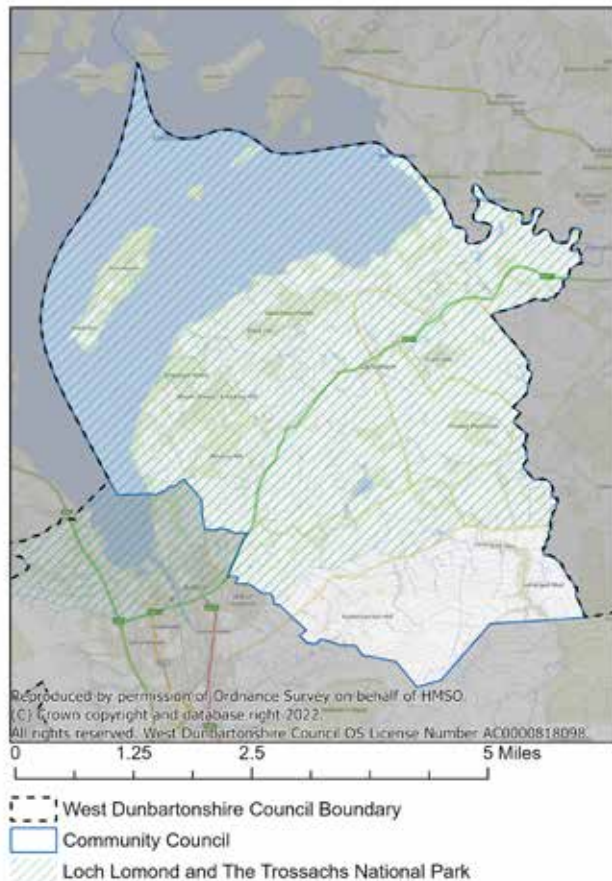
How could it be better: No response

Influence and Sense of Control

What is good now: Community Council.
Housing association.

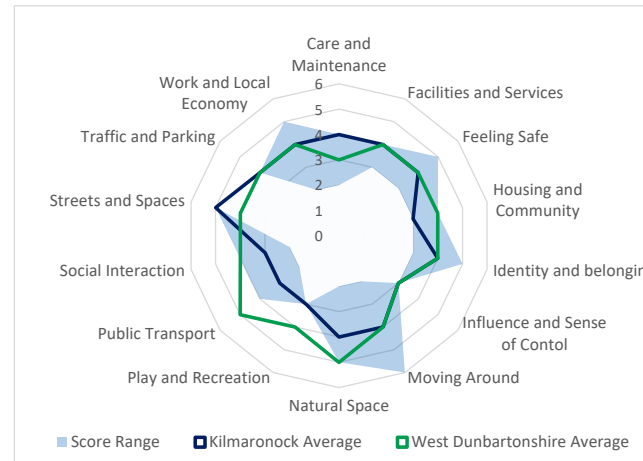
How could it be better: More residents getting
involved in local area.

Kilmaronock



Responses

1 organisation, Kilmaronock Community Council (note the submission included answers from individual members of the organisation, which allowed a range of answers to be shown on the graph).



Moving Around

What is good now: Walking routes. Connectivity

How could it be better: Safety. Maintenance of surfaces. Signage. Management of interaction between traffic, walkers and cyclists.

Public Transport

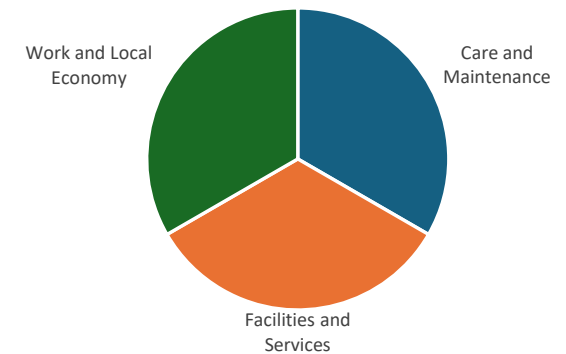
What is good now: Buses to Balloch, Drymen and Balmaha. Train service to Glasgow

How could it be better: Bus connection to Stirling is poor. More frequent services. More regular services. Bus shelters. Real time bus information.

Traffic and Parking

What is good now: Parking at Balloch Station. Parking at Millenium Hall.

Kilmaronock Priorities



How could it be better: More passing places. Improved signage for passing places. Strategy for electric vehicle charging. Main street parking in Gartocharn. Better speed enforcement/signage.

Streets and Spaces

What is good now: Greenspace and walks. Pavements in the village.

How could it be better: Wider pavement on A811 at Ashfield Farm. Improved pavement maintenance. Improve drainage in areas liable to flood in bad weather. On street parking should be addressed.

Natural Spaces

What is good now: Balloch Park. Ross Priory Wood RSPB reserve. Duncryne hill. Loch Lomond. Access to public natural spaces by bus.

How could it be better: Bin collection in parks. Drainage at play park. More public toilets throughout the area.

Play and Recreation

What is good now: Sports facilities in Alexandria. Water sports on Loch Lomond. Millenium Hall. Primary school sports facilities.

How could it be better: Updates to and maintenance of sports and play facilities. Improved facilities for community activities on Loch Lomond. More public toilets at sport and play facilities. More volunteers to run events.

Facilities and Services

What is good now: Vale of Leven hospital and other medical facilities. Gartocharn Primary School. Mobile Library. Mobile bank.

How could it be better: Transport to medical facilities. Improved library and access to learning. Improve pre-school access. Priority for local children at primary school.

Work and Local Economy

What is good now: Village shop and petrol station. Broadband converge. Transport connectivity to Glasgow and Stirling. Tourism an important part of the economy.

How could it be better: More flexible working options. Improved public transport. Better Childcare.

Housing and Community

What is good now: Community Hall. Community spirit.

How could it be better: Area can feel isolated. Old housing stock. Reliance on carbon fuel. Need for smaller dwellings for first time buyers and downsizing. Support needed to improve housing energy conservation.

Social Interaction

What is good now: Millenium Hall. Play Park. Football park. Local school.

How could it be better: More activities at Millenium Hall. Local pub/café. More volunteers for running events.

Identity and Belonging

What is good now: Millenium Hall. Local charity events. Multi-generational families in the area. Local heritage celebrated. Local Primary School

How could it be better: Local pub/café/food business. Local newsletter. Lack of volunteers for events. Social focus for older children/teenagers.

Feeling Safe

What is good now: Low crime. Litter bins.

How could it be better: More police visibility. Better speed enforcement and tackling poor driving. Safer road crossing in the village. Some antisocial behaviour/damage on farms. Conflict on backroads between drivers, walkers and cyclists. Some antisocial behaviour in front of Millenium Hall.

Care and Maintenance

What is good now: No comments

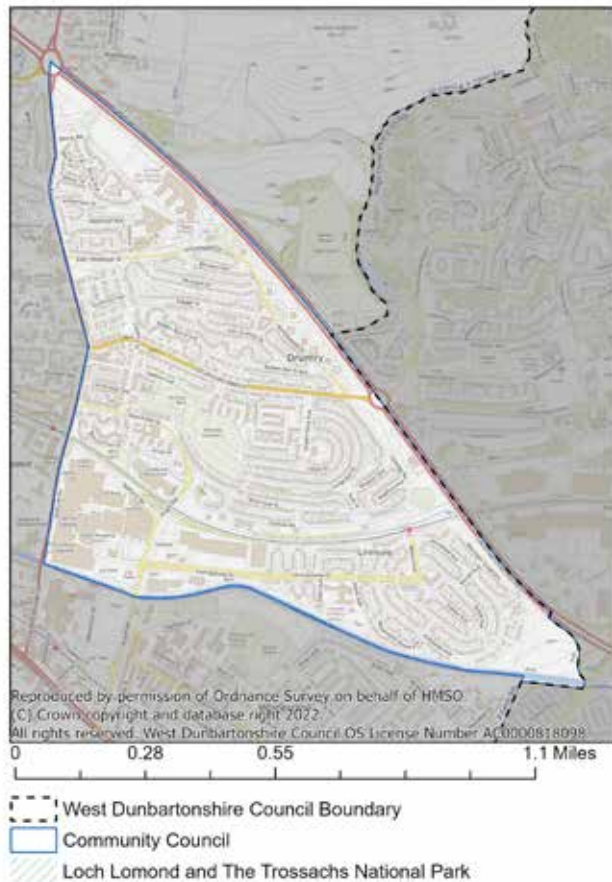
How could it be better: Address road flooding at A811 and Ross Loan. Better pavement maintenance. Improved waste management and collection. Address fly-tipping. Repair potholes.

Influence and Sense of Control

What is good now: Active community council. Environmental health support for private water operators.

How could it be better: Better communications with West Dunbartonshire Council. Better local authority funding to meet needs of community. Council and National Park authority to give more consideration to community views when deciding on policy.

Linnvale and Drumry



Responses

Fewer than 5 individuals



Moving Around

What is good now: Quiet streets

How could it be better: Remove hedgerows obstructing pavement

Public Transport

What is good now: Nothing is good

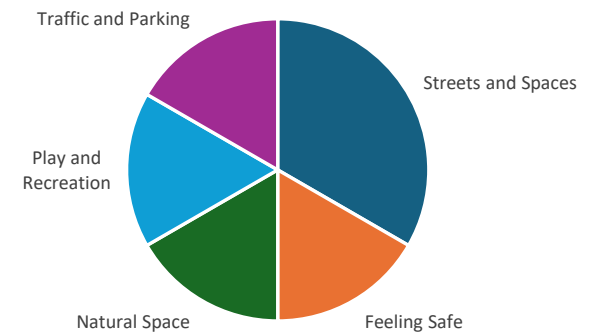
How could it be better: More buses to Drumchapel and Great Western Retail Park.
Better evening services.

Traffic and Parking

What is good now: People park conscientiously.

How could it be better: Some people .
Improve street lighting.

Linnvale and Drumry Priorities



Streets and Spaces

What is good now: Green spaces.

How could it be better: More grass cutting.

Natural Spaces

What is good now: Most stated nothing is good.

How could it be better: More grass cutting.

Play and Recreation

What is good now: No comments

How could it be better: Improve play equipment

Facilities and Services

What is good now: New doctors surgery.
Clydebank Leisure Centre

How could it be better: More doctors
appointments

Work and Local Economy

What is good now: No comments

How could it be better: No comments

Housing and Community

What is good now: No Comments

How could it be better: More homes for first
time buyers.

Social Interaction

What is good now: Clydebank Leisure Centre

How could it be better: No Comments

Identity and Belonging

What is good now: Strong sense of identity

How could it be better: No Comments

Feeling Safe

What is good now: Police service. Good
neighbours

How could it be better: More police presence

Care and Maintenance

What is good now: Clean streets. Bins
emptied regularly.

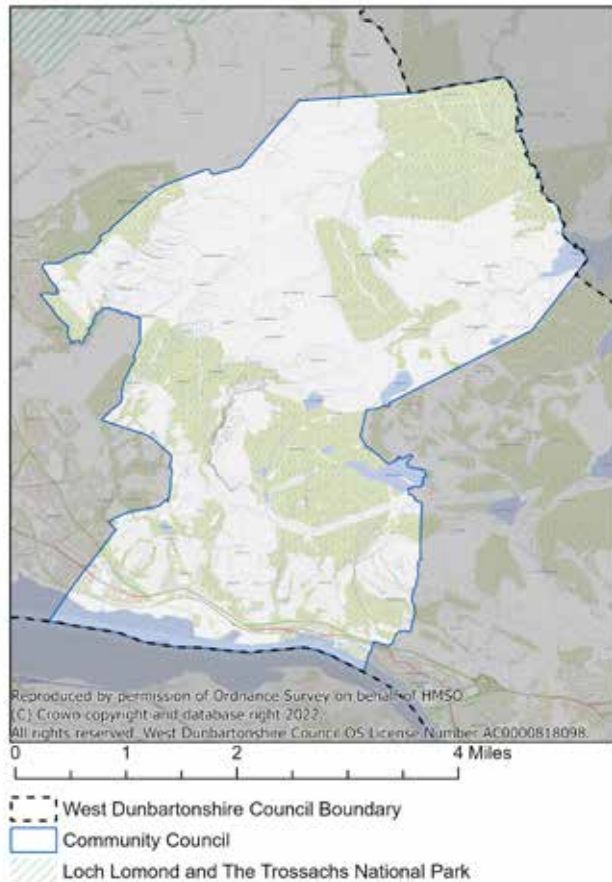
How could it be better: More grass cutting.

Influence and Sense of Control

What is good now: No comments

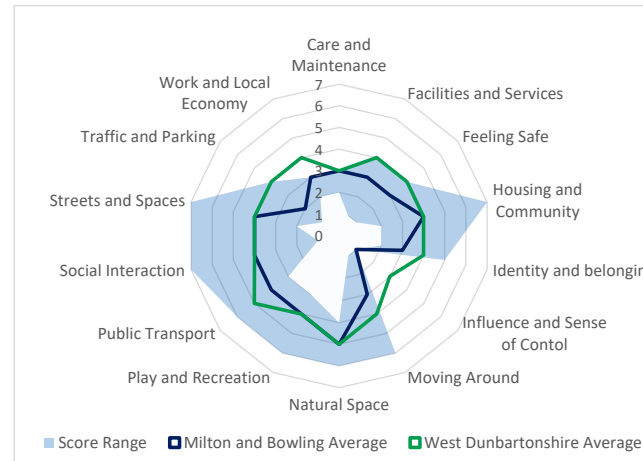
How could it be better: No comments

Milton and Bowling



Responses

Fewer than 5 individuals



Moving Around

What is good now: Availability of paths, pavements and cycle route.

How could it be better: Address pavement obstructions - pavement parking, bins, and overgrown bushes and trees. Hedges and trees block visibility of oncoming traffic in some places.

Public Transport

What is good now: Regular bus and train services

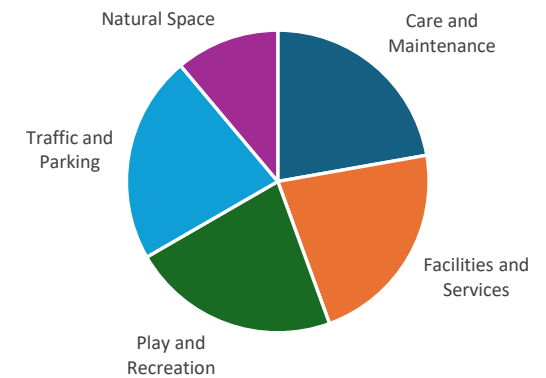
How could it be better: Electronic screens at bus shelters. More evening trains

Traffic and Parking

What is good now: Parks and greenspaces. Attractive buildings.

How could it be better: Designated street parking. Improve condition of car parks.

Milton and Bowling Priorities



Streets and Spaces

What is good now: Parks and greenspaces. Attractive buildings.

How could it be better: Better maintenance of some buildings. Some buildings left derelict. More overall care and maintenance needed.

Natural Spaces

What is good now: Bowling Harbour. Access to greenspace.

How could it be better: Safer crossings on A82 to access Greenpaces to north of Bowling. Conflicts between electric bikes and scooters with other users on shared use path.

Play and Recreation

What is good now: Play parks. Bowling Harbour. Play spaces in new developments.

How could it be better: More facilities for older children. Reinstating facility like Bowling Hall.

Facilities and Services

What is good now: Recycling facilities.

How could it be better: Library or community hub facility. More resources for social services care of elderly. More care home options.

Work and Local Economy

What is good now: Some local Shops. Shops at bowling Harbour

How could it be better: better diversity of shops in Dumbarton town centre. Develop tourist facilities in village and Harbour

Housing and Community

What is good now: Homes generally well looked after. Very little antisocial behaviour.

How could it be better: More family homes. More variety of homes (e.g. terraces)

Social Interaction

What is good now: Café at Harbour. Pub.

How could it be better: Replacement for Bowling Hall - unused arch at the Harbour could be used. More entertainment in Dumbarton (e.g. cinema).

Identity and Belonging

What is good now: Friendly people.

Community events

How could it be better: Loss of hall means lack of focus for activities

Feeling Safe

What is good now: Generally feels safe. Street lighting.

How could it be better: Improved social services. Address drug and addiction issues in Dumbarton. Address antisocial behaviour.

Care and Maintenance

What is good now: Bin collections. Private homes cared for.

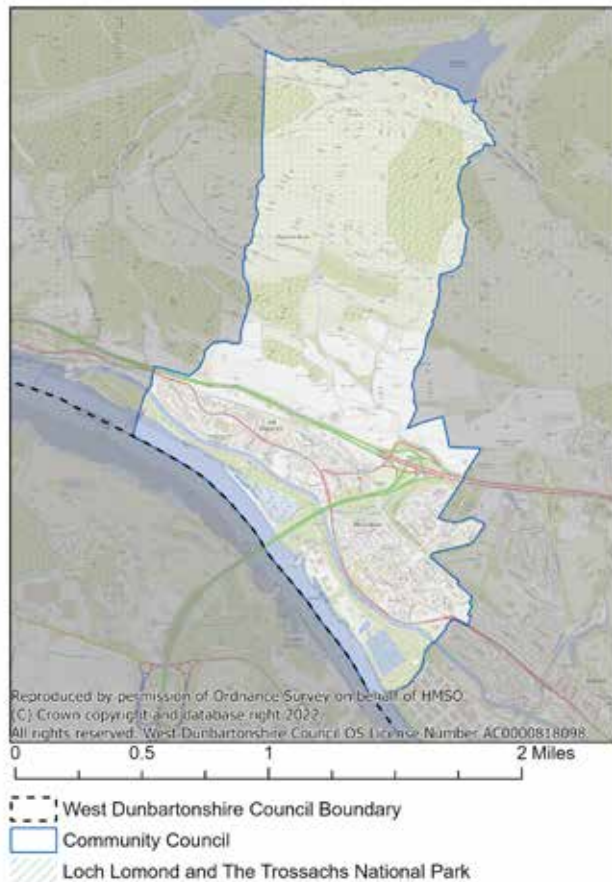
How could it be better: Concerns about quarrying causing damage to properties in Milton. Improve pavement conditions. Some derelict properties need attention.

Influence and Sense of Control

What is good now: No comments.

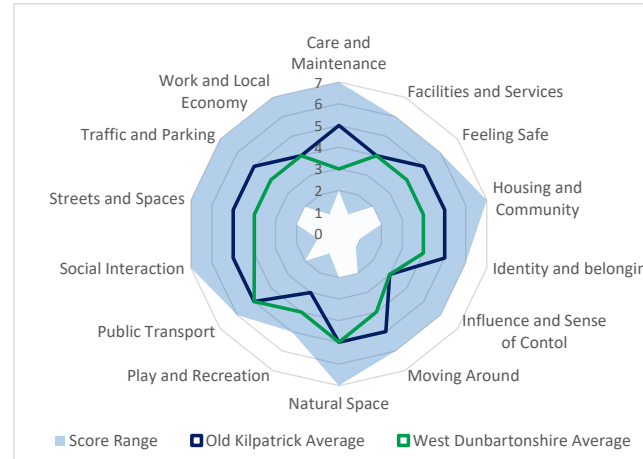
How could it be better: Better communication and responsiveness from Council.

Old Kilpatrick



Responses

6 individuals



Moving Around

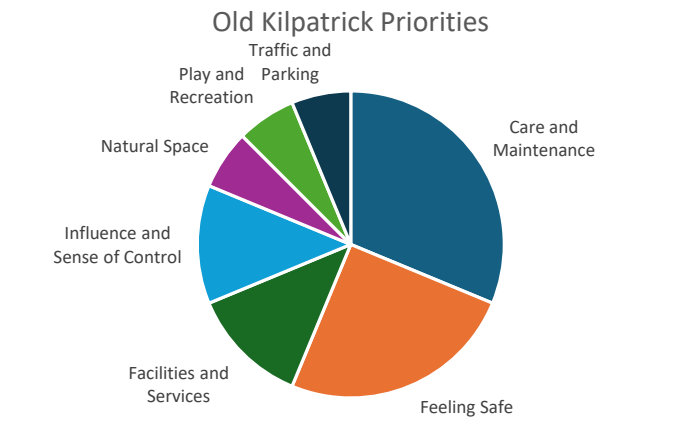
What is good now: Availability of pavements and walking routes. Cycle Routes. Lighting. Signage.

How could it be better: Improved condition of pavements and roads. More grass cutting. Hedge and tree cutting on paths, pavements and cycle route. Address pavement pacing. Lighting on canal path. Some paths in Lusset Glen and Saltings are boggy.

Public Transport

What is good now: Availability of transport options. Links to Queen Elizabeth University Hospital and Clydebank

How could it be better: More regular services. More reliable services. Improve signage.



Traffic and Parking

What is good now: Sufficient parking at Clydebank shopping centre.

How could it be better: More parking. Reduce traffic volumes and speeds on A82 and station road. Better road maintenance. More parking enforcement. Make connections between cycle route and other routes safer

Streets and Spaces

What is good now: Quiet area. Village character. Building upkeep generally good.

How could it be better: More places for people to gather. Better signage. Better management of biodiversity. More grass cutting. Address litter.

Natural Spaces

What is good now: Accessible green space. Walking routes. Access to Kilpatrick Hills. Rural character.

How could it be better: Better maintenance and management of green spaces. More consultation on what spaces are important. Better lighting in some open spaces e.g. Saltings.

Play and Recreation

What is good now: Accessible open spaces. Walking and cycling routes.

How could it be better: Better maintenance of green spaces and play parks. More play parks. More indoor facilities.

Facilities and Services

What is good now: Local Shops. Schools. Health Centre. Pharmacy. Recycling facilities.

How could it be better: Currently no places for local clubs to meet with loss of hall and libraries. Need indoor place to spend time without spending money.

Work and Local Economy

What is good now: Opportunities to volunteer
How could it be better: Encourage more people to volunteer. Support for local businesses.

Housing and Community

What is good now: Mixed community with various socio-economic groups in the area and property types. Housing well maintained. New homes being built in the area.

How could it be better: More downsizing options.

Social Interaction

What is good now: Local Clubs. Pubs. Local social media pages and groups. Community Council.

How could it be better: Recent loss of Community Hall and Library means less places for activities and places to gather.

Identity and Belonging

What is good now: Generally feels like a pleasant safe place to live. Feels self sufficient. Dedicated volunteers in local area.

How could it be better: More community meeting spaces - community spirit harmed by loss of facilities. Protect rural environment/ village feel of area.

Feeling Safe

What is good now: Generally feels safe. Good neighbours. Street lighting.

How could it be better: Address antisocial behaviour, particularly in Lusset Glen and Saltings/under Erskine Bridge. Better lighting in Lusset Glen and Saltings. More visible police presence.

Care and Maintenance

What is good now: Local litter picking

How could it be better: Better maintenance of pavements and roads. Better maintenance of older buildings. Better maintenance of greenspaces.

Influence and Sense of Control

What is good now: Community keen to advocate for their area and take on some responsibilities.

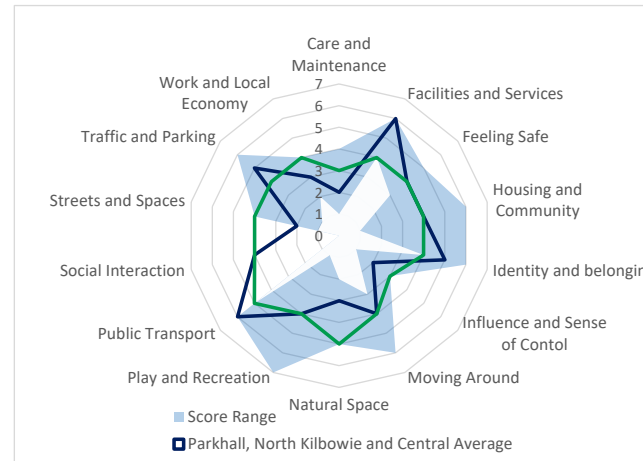
How could it be better: More resources for local communities. Council could be more responsive to citizens. Council needs approach needed to smaller communities to Dumbarton or Clydebank.

Parkhall, North Kilbowie and Central



Responses

Fewer than 5 individuals



Moving Around

What is good now: Enough paths. Good connections to buses and train stations.

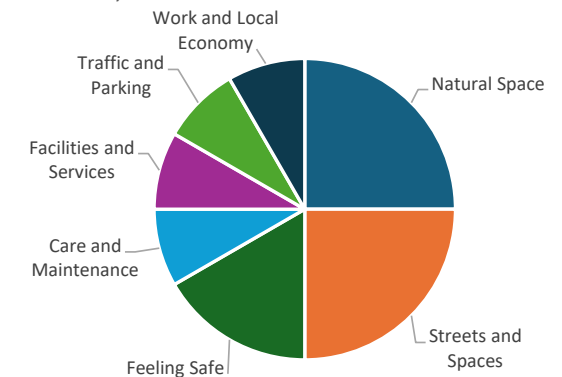
How could it be better: Better maintenance of paths, which are in poor condition or overgrown.

Public Transport

What is good now: Good access to trains and bus services. Reliable trains. Services regular.

How could it be better: Improve evening and Sunday buses. Introduce bus services along Dumbarton's road. Connections to Health Centre and Leisure Centre. Introduce shuttle buses for short distances.

Parkhall, North Kilbowie and Central Priorities



Traffic and Parking

What is good now: Lots of parking

How could it be better: More parking. Reduce illegal use of disabled parking.

Streets and Spaces

What is good now: Nice public buildings. Open spaces

How could it be better: More grass cutting. More maintenance of road surfaces, markings and drains.

Natural Spaces

What is good now: Parks. Walking routes. Golf courses.

How could it be better: More maintenance. More grass cutting. More bins. Address use of offroad vehicles in open spaces.

Play and Recreation

What is good now: Open space and play areas. Maintenance of Dalmuir Park.

How could it be better: More grass cutting to allow more places to be used. Concerns about ticks.

Facilities and Services

What is good now: Bin collection. Schools. Sports venues. Leisure centres. Well maintained public buildings internally.

How could it be better: More litter and dog waste bins. Improve maintenance of outdoor areas of public buildings.

Work and Local Economy

What is good now: Shops in nearby town centre and retail parks.

How could it be better: More job opportunities. Make use of empty shops.

Housing and Community

What is good now: Good standard of social housing

How could it be better: More affordable homes. Better maintenance of housing stock. Address antisocial behaviour.

Social Interaction

What is good now: No comments

How could it be better: Replace backdoor gallery.

Identity and Belonging

What is good now: No comments

How could it be better: Advertise local events more. Maintain open spaces.

Feeling Safe

What is good now: Street lighting

How could it be better: More policing. CCTV

Care and Maintenance

What is good now: No comments

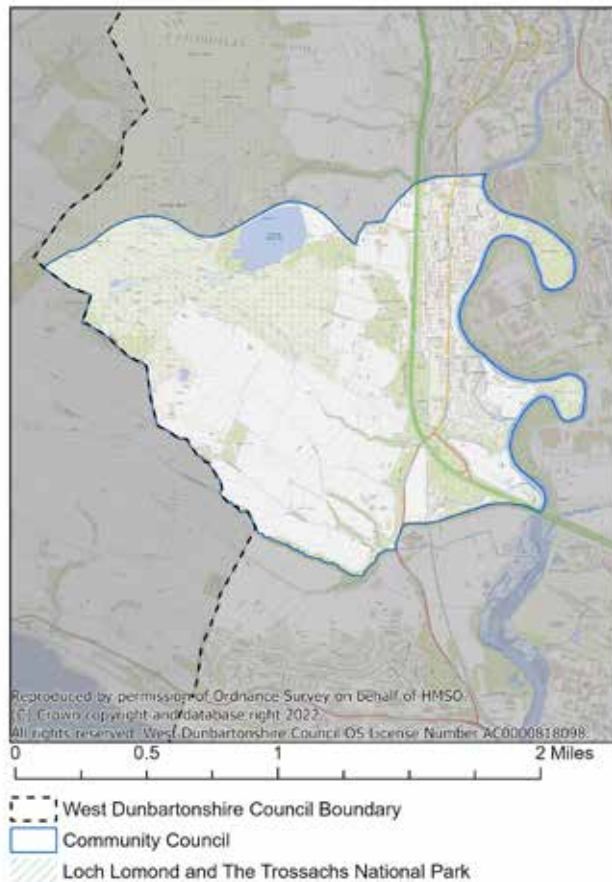
How could it be better: Cut grass and weeds. Improve road surfaces. Council could be more responsive to complaints. Reverse brown bin charge.

Influence and Sense of Control

What is good now: No comments

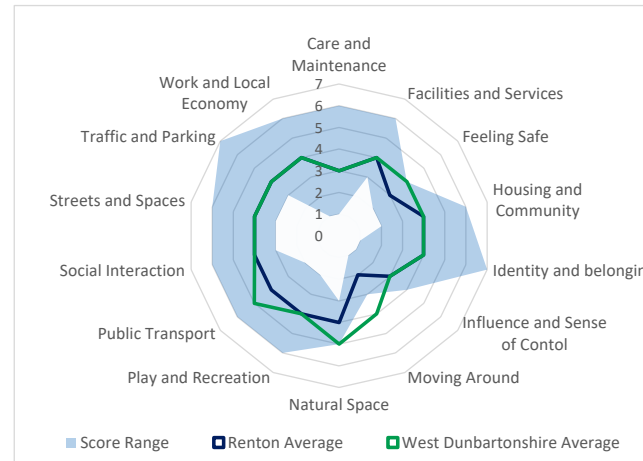
How could it be better: Listen and be more responsive to citizens. More consultation.

Renton



Responses

Fewer than 5 individuals



Moving Around

What is good now: Area is quiet

How could it be better: More pavement space for prams and wheelchairs.

Public Transport

What is good now: Availability of transport options

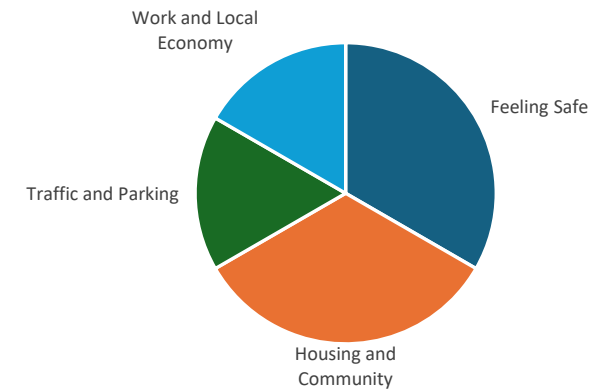
How could it be better: More frequent buses. More affordable service.

Traffic and Parking

What is good now: Mixed views on traffic issues.

How could it be better: Issues with large vehicles travelling down narrow streets. Traffic calming. More Speed enforcement. Removing garages along main roads could improve traffic flow.

Renton Priorities



Streets and Spaces

What is good now: Main street. Leisure Centre. Local heritage.

How could it be better: More planting and flowerbeds. More information on local heritage like signs and investment in museums.

Natural Spaces

What is good now: Christie Park. Area has a lot of natural beauty.

How could it be better: Protect natural environment. More local resident involvement in keeping area tidy.

Play and Recreation

What is good now: Swimming pool. Gym. Availability of sport facility.

How could it be better: Affordability of facilities. Encourage more participation in sport.

Facilities and Services

What is good now: Health centre. Generally good facilities.

How could it be better: More accessible pharmacy provision

Work and Local Economy

What is good now: Shops and eating places

How could it be better: Opportunities for travel and tourism and hospitality. Lomond galleries has potential for these business opportunities.

Housing and Community

What is good now: Housing suitably

How could it be better: Improve condition of buildings.

Social Interaction

What is good now: Community groups and lunch clubs. Monthly community magazine.

How could it be better: More cultural activities.

Identity and Belonging

What is good now: Lots of residents have lived in the area a long time, creating a sense of community.

How could it be better: Further work is needed to create a sense of identity.

Feeling Safe

What is good now: Police presence

How could it be better: Police walking on streets rather than in vehicles. More events for neighbours to get together.

Care and Maintenance

What is good now: There were mixed views on care and maintenance of the area.

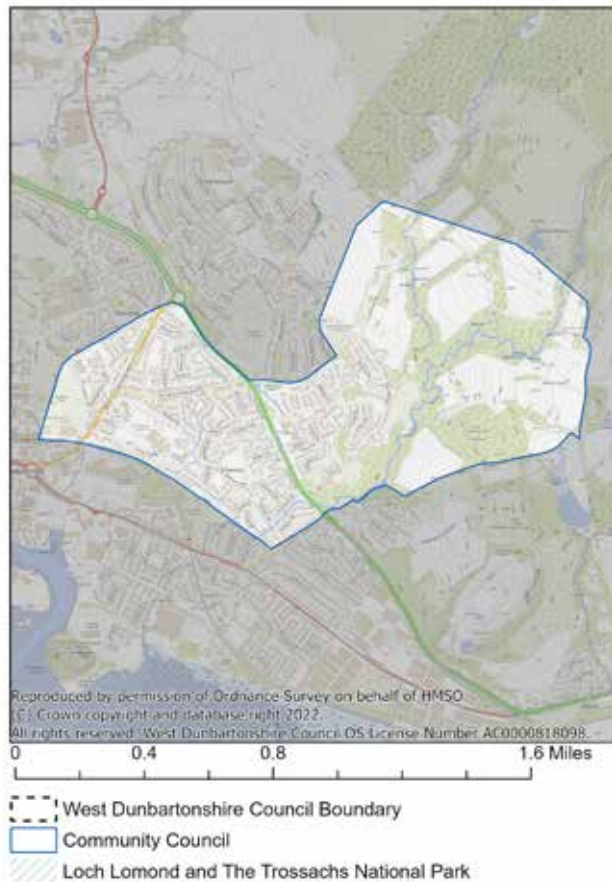
How could it be better: General improvements to upkeep of the area.

Influence and Sense of Control

What is good now: Easy to report issues

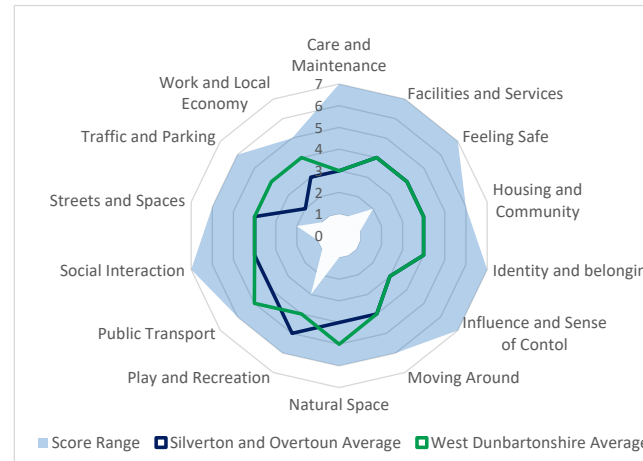
How could it be better: Be more responsive to issues reported.

Silverton and Overtoun



Responses

6 individuals and 1 organisation, Chapelton Avenue Community Garden Group



Moving Around

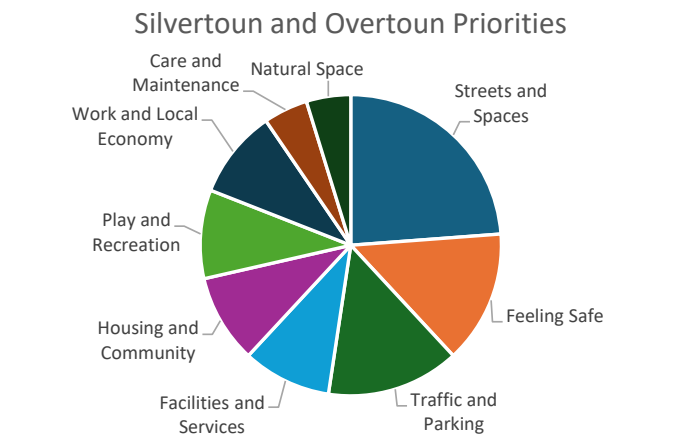
What is good now: Availability of paths, pavements and walking routes. Cycle route. Quiet area.

How could it be better: More maintenance of hedgerows and grass areas. More maintenance of pavements and roads. More speedbumps or traffic calming. More pedestrian crossings. Address pavement parking. Better lighting on cycle route.

Public Transport

What is good now: Available bus and train services.

How could it be better: More reliable services. More frequent services. Later services, More affordable services. Improve accessibility and maintenance of Dumbarton East station. More bus shelters.



Traffic and Parking

What is good now: Town centre parking. Installation of children playing signage.

How could it be better: Reduce pavement and illegal parking. More disabled parking spaces. More parking. Lower speed limits. There are conflicts between High Street parking and buses.

Streets and Spaces

What is good now: Greenspaces, parks. and woodland In particular Levensgrove Park

How could it be better: Improve lighting. Improved signage. More planting. Better maintenance of historic and public buildings. More seating in parks. Better maintenance of open spaces and cycle route. Improve environment around Dumbarton East Station. Town centre regeneration.

Natural Spaces

What is good now: Access to green space. Community involvement in maintaining spaces.

How could it be better: More grass cutting. More tree maintenance. Plant more flowers/wildflowers. Improve cycle paths. Promote nature walks. Continue to support communities maintaining green spaces. Improve Overtoun estate

Play and Recreation

What is good now: Availability of play parks and sports pitches.

How could it be better: Improve playpark equipment. More toilets in parks. Longer Library hours. Address antisocial in playparks. Reduce antisocial behaviour. More support/funding for community groups.

Facilities and Services

What is good now: Health centre. Shops. Library. Schools. Voluntary/community organisations. Out of hours schools clubs.

How could it be better: More printed information. More investment in hospitals and health services for mental health and addiction. More support for children with additional needs. More prompt waste uplift. reverse brown bin charge.

Work and Local Economy

What is good now: Some opportunities for volunteering, education and employment.

How could it be better: More diverse shops. More advertising of volunteering, education and employment opportunities. More education and training opportunities for young people. Regenerate Dumbarton High Street.

Housing and Community

What is good now: Mixed housing. Community spirit

How could it be better: More social housing. More sheltered housing. Address flooding issues and build less on floodplains. More prompt repairs. Address antisocial behaviour. More attention paid to infrastructure when building new housing.

Social Interaction

What is good now: Active community groups at Meadow Centre and Concord Centre.

How could it be better: More informal meeting places, like cafes and restaurants. Better advertising of events. More facilities and activities for children and young people.

Identity and Belonging

What is good now: Community groups. Multiple generations of families choose to stay in the area.

How could it be better: Investment to make the area more attractive.

Feeling Safe

What is good now: There were mixed responses as to how safe the area feels. Some good community links with police.

How could it be better: Address antisocial behaviour. More policing. Better lighting. Deal with addiction issues. Improve safety at night.

Care and Maintenance

What is good now: Some notable maintenance. Residents take care of properties.

How could it be better: Address littering and fly tipping. More grass cutting. More maintenance of roads and pavements. More gritting of walkways in winter. More timely repairs of ... More bin uplifts. Update public facilities.

Influence and Sense of Control

What is good now: Local councillor and MSP.

How could it be better: More communication and engagement. Listen to citizens. More power for Community Councils. Council services could be more responsive to queries. More transparency.

Auchentoshan Distillery



Responses

12 individuals (where relevant these responses are also included in the summary for their associated community council area).

A number of responses received were specifically for the proposed development of a hydrogen production and storage facility at the Auchentoshan Distillery.

While the purpose of this consultation was not to collect information on specific developments, a summary of these comments is also presented here. These comments will be helpful in considering how hydrogen facilities should be treated within the Local Development Plan.

The comments and scores submitted in relation to the distillery's hydrogen development proposal are also included in the summaries for the relevant Community Council areas, Old Kilpatrick and Dalmuir and Mountblow.

Moving Around

What is good now: Paths. Pavements. Roads. Lighting

How could it be better: Concerns that the hydrogen plant could restrict the pedestrian walkway. Concern that increase traffic from hydrogen plant could make A82 crossings harder to use.

Public Transport

What is good now: Bus stops near to distillery.

How could it be better: Improve public transport availability to distillery. Concern that more workers would create more traffic.

Traffic and Parking

What is good now: Roads and parking are appropriate for current level of use.

How could it be better: Concern that the hydrogen facility will increase traffic to distillery. Concerns with increased traffic on pedestrian safety, especially at schools.

Streets and Spaces

What is good now: Attractive green and natural spaces. Old Dalnottar Cemetery is a peaceful place.

How could it be better: Concern that construction of the hydrogen facility will negatively attractiveness of surroundings. Concern that more traffic will lead to more parking on the streets.

Natural Spaces

What is good now: Current greenspace and habitat. Natural beauty and tranquillity of the area. Area is good for walking

How could it be better: Concern that proposed hydrogen facility would cause loss of greenspace, habitat, natural beauty and rural feel.

Play and Recreation

What is good now: Area is good for walking along Clyde and in Kilpatrick Hills.

How could it be better: Concern that proposed hydrogen facility would cause loss of greenspace, habitat and natural beauty.

Facilities and Services

What is good now: Local schools, with Additional Learning Needs schools highlighted. Playparks. Shops.

How could it be better: Concerns about water supply for hydrogen production. Concerns around risk of accident of hydrogen facility and impacts on emergency services.

Work and Local Economy

What is good now: Auchentoshan Distillery provides local employment.

How could it be better: Concern that hydrogen facility does not provide much long term work. Concern it could affect visiting experience.

Housing and Community

What is good now: Good mix of housing. New housing being built. Green spaces. Community spirit.

How could it be better: Concern about safety of nearby homes and communities near proposed hydrogen production facility.

Social Interaction

What is good now: Napier Hall.

How could it be better: Local people are good at passing on information on what is happening in the area.

Identity and Belonging

What is good now: Strong sense of community connected to local landscape and heritage.

How could it be better: Concern about the effect of hydrogen production facility on communities and local landscape.

Feeling Safe

What is good now: Generally feels safe.

How could it be better: Concerns around safety of hydrogen production near residential areas.

Care and Maintenance

What is good now: No comments

How could it be better: concern that additional traffic and water use will put pressure on infrastructure

Influence and Sense of Control

What is good now: Residents are organised in responding to development proposals.

How could it be better: Better engagement about the development needed. Council could be more responsive.

Additional Comments

Additional comments emphasises opposition to the proposed hydrogen facility due to the proximity to residential properties, safety concerns, and loss of green space.

Additional Comments

Alexandria

Council should listen to local community about development, for example “flamingo land”

Balloch and Haldane

All issues should be looked at, not just limited priorities. Cuts to services are not helping the local community. Balloch has limited potential as a place to attract tourists

Bonhill and Dalmonach

Council should listen to local community about development, for example “flamingo land”. Better care and maintenance would improve pride in the local area. There is opposition to garden refuse bin charges.

Clydebank East

Council should address conflicts that arise between council tenants and other residents. More inspections of council housing is needed.

Dalmuir and Mountblow

Additional comments emphasises opposition to the proposed hydrogen facility due to the proximity to residential properties, safety concerns, and loss of green space.

Dumbarton East and Central

Dumbarton town centre needs investment and more care and maintenance, focussing on history and community.

Dumbarton North

Dumbarton needs more care, maintenance and investment.

Dumbarton West

There is a need for free or inexpensive spaces and opportunities to meet people. Particularly for those who are out of work or education.

Duntocher and Hardgate

Comments emphasised desire for traffic calming on A82.

Faifley

No additional comments

Kilmaronock

Local businesses are a very important aspect of the community and enable investment in the area. An early learning facility would be beneficial for the area.

Linnvale and Drumry

The council should have more inspections to pick up on safety issues or eyesores.

Milton and Bowling

No additional comments

Old Kilpatrick

More attention should be paid to the results of council surveys. Council should be more ambitious and imaginative to overcome limited budgets.

Parkhall, North Kilbowie, and Central

Additional emphasis placed in the importance of care and maintenance and public transport.

Renton

Safety should be the top priority. Maintenance works take a long time to be completed.

Silvertoun and Overtoun

More employment in more diverse industries is needed in the area. Investment is needed in public services, such as schools, to improve standards. Better management of housing stock and more timely repairs are needed. There are concerns about crime rates.